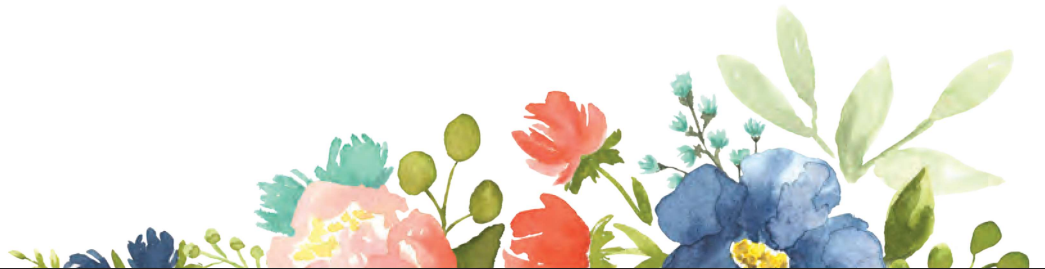


STAMPIN' UP!®

JANUARY MINI CATALOG

2024



PAGE #: 1

CRAFTER LEVEL: Beginner

CARD BASE SIZE:

PAPER

159276 - Basic White 8-1/2" X 11" Cardstock

INK

147052 - Flirty Flamingo Classic Stampin' Pad, 147084 - Real Red Classic Stampin' Pad, 147087 - Crushed Curry Classic Stampin' Pad, 147095 - Granny Apple Green Classic Stampin' Pad, 147097 - Coastal Cabana Classic Stampin' Pad, 154884 - Flirty Flamingo Stampin' Blends Combo Pack, 154885 - Granny Apple Green Stampin' Blends Combo Pack, 154894 - Pool Party Stampin' Blends Combo Pack, 154922 - Bronze & Ivory Stampin' Blends Combo Pack, 159224 - Sweet Sorbet Stampin' Blends Combo Pack, 159462 - Stampin' Blends Medium Combo, 161665 - Pecan Pie Classic Stampin' Pad, 161673 - Lemon Lolly Stampin' Blends Combo Pack

TOOLS

103683 - Mini Glue Dots, 104430 - Stampin' Dimensionals, 152813 - Stampin' Seal, 162927 - Thoughtful Moments Hybrid Embossing Folder (English), 162936 - Stampin' Brayer

BUNDLES

162771 - Ice Cream Swirl Bundle (English)

INSTRUCTIONS



TECHNIQUES:

- Markering Stamps
- Stampin' Blends Coloring

PAGE #: 2

CRAFTER LEVEL: Avid

CARD BASE SIZE:

PAPER

120953 - Crumb Cake 8-1/2" X 11" Cardstock, 122924 - Pool Party 8-1/2" X 11" Cardstock, 141416 - Flirty Flamingo 8-1/2" X 11" Cardstock, 155613 - Fresh Freesia 8-1/2" X 11" Cardstock, 159276 - Basic White 8-1/2" X 11" Cardstock, 161720 - Lemon Lolly 8-1/2" X 11" Cardstock, 162747 - Lighter Than Air 6" X 6" (15.2 X 15.2 Cm) Designer Series Paper

INK

147052 - Flirty Flamingo Classic Stampin' Pad, 147087 - Crushed Curry Classic Stampin' Pad, 147094 - Daffodil Delight Classic Stampin' Pad, 147095 - Granny Apple Green Classic Stampin' Pad, 147097 - Coastal Cabana Classic Stampin' Pad, 154883 - Daffodil Delight Stampin' Blends Combo Pack, 154884 - Flirty Flamingo Stampin' Blends Combo Pack, 154885 - Granny Apple Green Stampin' Blends Combo Pack, 154894 - Pool Party Stampin' Blends Combo Pack, 154922 - Bronze & Ivory Stampin' Blends Combo Pack, 155518 - Fresh Freesia Stampin' Blends Combo Pack, 155611 - Fresh Freesia Classic Stampin' Pad, 159216 - Sweet Sorbet Classic Stampin' Pad, 161665 - Pecan Pie Classic Stampin' Pad

TOOLS

104430 - Stampin' Dimensionals, 149699 - Stampin' Seal+, 161597 - Nested Essentials Dies

EMBELLISHMENTS

160430 - Pool Party 3/8" (1 Cm) Grosgrain Ribbon

BUNDLES

162771 - Ice Cream Swirl Bundle (English)

INSTRUCTIONS

Color swirls with lighter blend of matching tone.



TECHNIQUES:

- Stampin' Blends Coloring

PAGE #: 3

CRAFTER LEVEL: Avid

CARD BASE SIZE:

PAPER

119683 - Daffodil Delight 8-1/2" X 11" Cardstock, 120953 - Crumb Cake 8-1/2" X 11" Cardstock, 122924 - Pool Party 8-1/2" X 11" Cardstock, 141416 - Flirty Flamingo 8-1/2" X 11" Cardstock, 155613 - Fresh Freesia 8-1/2" X 11" Cardstock, 159276 - Basic White 8-1/2" X 11" Cardstock, 162747 - Lighter Than Air 6" X 6" (15.2 X 15.2 Cm) Designer Series Paper

INK

147107 - Pool Party Classic Stampin' Pad, 154884 - Flirty Flamingo Stampin' Blends Combo Pack, 155611 - Fresh Freesia Classic Stampin' Pad

TOOLS

104430 - Stampin' Dimensionals, 110755 - Multipurpose Liquid Glue, 152813 - Stampin' Seal

EMBELLISHMENTS

161635 - 3/8" (1 Cm) Sheer Ribbon Combo Pack, 162759 - Baker's Twine Three Color Pack

BUNDLES

162771 - Ice Cream Swirl Bundle (English)

INSTRUCTIONS

Color a piece of white with light flirty blends wash, then die cut ice cream layer.



TECHNIQUES:

- Stampin' Blends Coloring

PAGE #: 3

CRAFTER LEVEL: Avid

CARD BASE SIZE:

STAMPS

162764 - Ice Cream Swirl Photopolymer Stamp Set (English)

PAPER

102210 - 6" X 8" (15.2 X 20.3 Cm) Cellophane Bags, 159276 - Basic White 8-1/2" X 11" Cardstock, 159788 - Envelope Treat Boxes, 162747 - Lighter Than Air 6" X 6" (15.2 X 15.2 Cm) Designer Series Paper

INK

147052 - Flirty Flamingo Classic Stampin' Pad, 147094 - Daffodil Delight Classic Stampin' Pad, 147097 - Coastal Cabana Classic Stampin' Pad, 155611 - Fresh Freesia Classic Stampin' Pad

TOOLS

104430 - Stampin' Dimensionals, 149699 - Stampin' Seal+, 161597 - Nested Essentials Dies

EMBELLISHMENTS

162759 - Baker's Twine Three Color Pack

INSTRUCTIONS

Create treat box but snip off one end to make a open ended box. 3" x 6" DSP covers the center.



TECHNIQUES:

- Other

PAGE #: 3

CRAFTER LEVEL: Avid

CARD BASE SIZE:

PAPER

131297 - Coastal Cabana 8-1/2" X 11" Cardstock, 159276 - Basic White 8-1/2" X 11" Cardstock

INK

147084 - Real Red Classic Stampin' Pad, 147087 - Crushed Curry Classic Stampin' Pad, 147095 - Granny Apple Green Classic Stampin' Pad, 154883 - Daffodil Delight Stampin' Blends Combo Pack, 154884 - Flirty Flamingo Stampin' Blends Combo Pack, 154885 - Granny Apple Green Stampin' Blends Combo Pack, 154922 - Bronze & Ivory Stampin' Blends Combo Pack, 159216 - Sweet Sorbet Classic Stampin' Pad, 159224 - Sweet Sorbet Stampin' Blends Combo Pack, 159462 - Stampin' Blends Medium Combo, 161665 - Pecan Pie Classic Stampin' Pad, 161673 - Lemon Lolly Stampin' Blends Combo Pack

TOOLS

103683 - Mini Glue Dots, 104430 - Stampin' Dimensionals, 110755 - Multipurpose Liquid Glue, 152813 - Stampin' Seal, 161597 - Nested Essentials Dies, 162934 - Mini Alphabet Dies

BUNDLES

162771 - Ice Cream Swirl Bundle (English)

INSTRUCTIONS



TECHNIQUES:

- Markering Stamps
- Stampin' Blends Coloring

PAGE #: 4

CRAFTER LEVEL: Casual

CARD BASE SIZE: Notecard

PAPER

120953 - Crumb Cake 8-1/2" X 11" Cardstock, 159237 - Distressed Gold 12" X 12" (30.5 X 30.5 Cm) Specialty Paper, 159276 - Basic White 8-1/2" X 11" Cardstock

INK

132708 - Tuxedo Black Memento Ink Pad, 147116 - Crumb Cake Classic Stampin' Pad

TOOLS

103683 - Mini Glue Dots, 104430 - Stampin' Dimensionals

BUNDLES

162667 - Stippled Roses Bundle (English)

INSTRUCTIONS



TECHNIQUES:

- Create your own DSP

PAGE #: 5 **CRAFTER LEVEL:** Casual **CARD BASE SIZE:** Square 3"

PAPER

100702 - Old Olive 8-1/2" X 11" Cardstock, 133675 - Blackberry Bliss 8-1/2" X 11" Cardstock, 133676 - Mossy Meadow 8-1/2" X 11" Cardstock, 159276 - Basic White 8-1/2" X 11" Cardstock

INK

147090 - Old Olive Classic Stampin' Pad, 147092 - Blackberry Bliss Classic Stampin' Pad

TOOLS

103683 - Mini Glue Dots, 104430 - Stampin' Dimensionals, 133773 - Sponge Daubers

EMBELLISHMENTS

162611 - Purple Fine Shimmer Gems

BUNDLES

162667 - Stippled Roses Bundle (English)

INSTRUCTIONS



TECHNIQUES:

- Sponging

PAGE #: 5 **CRAFTER LEVEL:** Casual **CARD BASE SIZE:** Standard A2

PAPER

100702 - Old Olive 8-1/2" X 11" Cardstock, 144243 - Berry Burst 8-1/2" X 11" Cardstock, 149612 - Fluid 100 Watercolor Paper

INK

101406 - Jet Black Stäzon Pad, 147090 - Old Olive Classic Stampin' Pad, 147143 - Berry Burst Classic Stampin' Pad

TOOLS

104430 - Stampin' Dimensionals, 151298 - Water Painters

EMBELLISHMENTS

155475 - Baker's Twine Essentials Pack

BUNDLES

162667 - Stippled Roses Bundle (English)

INSTRUCTIONS



TECHNIQUES:

- Watercolor • Detailed

PAGE #: 6

CRAFTER LEVEL: Avid

CARD BASE SIZE: Standard A2

PAPER

101856 - Vellum 8-1/2" X 11" Cardstock, 131199 - Crushed Curry 8-1/2" X 11" Cardstock, 131202 - Smoky Slate 8-1/2" X 11" Cardstock, 141416 - Flirty Flamingo 8-1/2" X 11" Cardstock, 146981 - Shaded Spruce 8-1/2" X 11" Cardstock, 146990 - Granny Apple Green 8-1/2" X 11" Cardstock, 159276 - Basic White 8-1/2" X 11" Cardstock

INK

102283 - Versamark Pad, 141897 - Wink Of Stella Glitter Brush, 147051 - Melon Mambo Classic Stampin' Pad, 147052 - Flirty Flamingo Classic Stampin' Pad, 147095 - Granny Apple Green Classic Stampin' Pad

TOOLS

104430 - Stampin' Dimensionals, 110755 - Multipurpose Liquid Glue, 153611 - Blending Brushes, 160644 - Sweet Citrus Hybrid Embossing Folder

EMBELLISHMENTS

155554 - Basics Embossing Powders, 158827 - Glossy Dots Assortment

BUNDLES

162871 - Simply Sparkling Bundle (English)

INSTRUCTIONS

Use the bubble dies to make a stencil. Add wink of stella to smoky slate pieces.



TECHNIQUES:

- Blending Brushes
- Heat Embossing

PAGE #: 6

CRAFTER LEVEL: Avid

CARD BASE SIZE:

PAPER

131199 - Crushed Curry 8-1/2" X 11" Cardstock, 146981 - Shaded Spruce 8-1/2" X 11" Cardstock, 146985 - Petal Pink 8-1/2" X 11" Cardstock, 161744 - Holographic Trio 12" X 12" (30.5 X 30.5 Cm) Specialty Paper

INK

102283 - Versamark Pad, 147051 - Melon Mambo Classic Stampin' Pad, 147087 - Crushed Curry Classic Stampin' Pad

TOOLS

110755 - Multipurpose Liquid Glue, 133773 - Sponge Daubers

EMBELLISHMENTS

155554 - Basics Embossing Powders

BUNDLES

162871 - Simply Sparkling Bundle (English)

INSTRUCTIONS

Use dauber to add mambo ink onto peach die cut from petal cardstock.



TECHNIQUES:

- Other

PAGE #: 6

CRAFTER LEVEL: Casual

CARD BASE SIZE:

PAPER

115320 - Melon Mambo 8-1/2" X 11" Cardstock, 131199 - Crushed Curry 8-1/2" X 11" Cardstock, 146990 - Granny Apple Green 8-1/2" X 11" Cardstock, 159276 - Basic White 8-1/2" X 11" Cardstock

INK

147051 - Melon Mambo Classic Stampin' Pad

TOOLS

110755 - Multipurpose Liquid Glue

BUNDLES

162871 - Simply Sparkling Bundle (English)

INSTRUCTIONS



TECHNIQUES:

- Other

PAGE #: 6

CRAFTER LEVEL: Casual

CARD BASE SIZE:

PAPER

115320 - Melon Mambo 8-1/2" X 11" Cardstock, 122924 - Pool Party 8-1/2" X 11" Cardstock, 146981 - Shaded Spruce 8-1/2" X 11" Cardstock, 146990 - Granny Apple Green 8-1/2" X 11" Cardstock, 159276 - Basic White 8-1/2" X 11" Cardstock

INK

147052 - Flirty Flamingo Classic Stampin' Pad, 147107 - Pool Party Classic Stampin' Pad

TOOLS

110755 - Multipurpose Liquid Glue

BUNDLES

162871 - Simply Sparkling Bundle (English)

INSTRUCTIONS



TECHNIQUES:

- Fussy cutting
- Other

PAGE #: 8

CRAFTER LEVEL: Avid

CARD BASE SIZE:

PAPER

159276 - Basic White 8-1/2" X 11" Cardstock, 162559 - Square Pillow Boxes

INK

102283 - Versamark Pad, 147094 - Daffodil Delight Classic Stampin' Pad, 147107 - Pool Party Classic Stampin' Pad, 147108 - Petal Pink Classic Stampin' Pad, 147145 - Lemon Lime Twist Classic Stampin' Pad

TOOLS

104430 - Stampin' Dimensionals

EMBELLISHMENTS

155554 - Basics Embossing Powders, 162558 - Sweet Sorbet 1/4" (6.4 Mm) Bordered Ribbon

BUNDLES

162554 - Bee My Valentine Bundle (English)

INSTRUCTIONS



TECHNIQUES:

- Stamping off

PAGE #: 8

CRAFTER LEVEL: Avid

CARD BASE SIZE: Slim

PAPER

146985 - Petal Pink 8-1/2" X 11" Cardstock, 149612 - Fluid 100 Watercolor Paper, 159268 - Sweet Sorbet 8-1/2" X 11" Cardstock, 159276 - Basic White 8-1/2" X 11" Cardstock, 162546 - Bee Mine 12" X 12" (30.5 X 30.5 Cm) Designer Series Paper

INK

102283 - Versamark Pad, 132708 - Tuxedo Black Memento Ink Pad, 147094 - Daffodil Delight Classic Stampin' Pad, 147107 - Pool Party Classic Stampin' Pad, 147108 - Petal Pink Classic Stampin' Pad

TOOLS

104430 - Stampin' Dimensionals, 110755 - Multipurpose Liquid Glue, 151298 - Water Painters, 153608 - Banners Pick A Punch

EMBELLISHMENTS

155554 - Basics Embossing Powders

BUNDLES

162554 - Bee My Valentine Bundle (English)

INSTRUCTIONS



TECHNIQUES:

- Watercolor Wash

PAGE #: 8 **CRAFTER LEVEL:** Casual **CARD BASE SIZE:** Notecard

PAPER

159268 - Sweet Sorbet 8-1/2" X 11" Cardstock, 159276 - Basic White 8-1/2" X 11" Cardstock

INK

147094 - Daffodil Delight Classic Stampin' Pad, 147107 - Pool Party Classic Stampin' Pad, 147108 - Petal Pink Classic Stampin' Pad, 147145 - Lemon Lime Twist Classic Stampin' Pad, 159216 - Sweet Sorbet Classic Stampin' Pad

TOOLS

104430 - Stampin' Dimensionals, 110755 - Multipurpose Liquid Glue

EMBELLISHMENTS

162557 - Adhesive-Backed Hearts & Flowers

BUNDLES

162554 - Bee My Valentine Bundle (English)

INSTRUCTIONS



TECHNIQUES:

- Other

PAGE #: 8 **CRAFTER LEVEL:** Casual **CARD BASE SIZE:** Standard A2

PAPER

159276 - Basic White 8-1/2" X 11" Cardstock, 162546 - Bee Mine 12" X 12" (30.5 X 30.5 Cm) Designer Series Paper

INK

132708 - Tuxedo Black Memento Ink Pad, 147094 - Daffodil Delight Classic Stampin' Pad, 147107 - Pool Party Classic Stampin' Pad, 147108 - Petal Pink Classic Stampin' Pad

TOOLS

104430 - Stampin' Dimensionals, 110755 - Multipurpose Liquid Glue

BUNDLES

162554 - Bee My Valentine Bundle (English)

INSTRUCTIONS



TECHNIQUES:

- Other

PAGE #: 8

CRAFTER LEVEL: Avid

CARD BASE SIZE:

PAPER

119683 - Daffodil Delight 8-1/2" X 11" Cardstock, 122924 - Pool Party 8-1/2" X 11" Cardstock, 146985 - Petal Pink 8-1/2" X 11" Cardstock, 159276 - Basic White 8-1/2" X 11" Cardstock, 162546 - Bee Mine 12" X 12" (30.5 X 30.5 Cm) Designer Series Paper

INK

159216 - Sweet Sorbet Classic Stampin' Pad

TOOLS

104430 - Stampin' Dimensionals, 110755 - Multipurpose Liquid Glue, 154336 - Give It A Whirl Dies

EMBELLISHMENTS

162557 - Adhesive-Backed Hearts & Flowers, 162558 - Sweet Sorbet 1/4" (6.4 Mm) Bordered Ribbon

BUNDLES

162554 - Bee My Valentine Bundle (English)

INSTRUCTIONS



TECHNIQUES:

- Other

PAGE #: 10

CRAFTER LEVEL: Avid

CARD BASE SIZE: Notecard

PAPER

146985 - Petal Pink 8-1/2" X 11" Cardstock, 159276 - Basic White 8-1/2" X 11" Cardstock, 162546 - Bee Mine 12" X 12" (30.5 X 30.5 Cm) Designer Series Paper

INK

147107 - Pool Party Classic Stampin' Pad, 147145 - Lemon Lime Twist Classic Stampin' Pad, 159216 - Sweet Sorbet Classic Stampin' Pad

TOOLS

110755 - Multipurpose Liquid Glue, 141825 - Foam Adhesive Strips, 144108 - Mini Stampin' Dimensionals, 161597 - Nested Essentials Dies

EMBELLISHMENTS

142314 - Window Sheets, 161626 - Loose Silver Sequins

BUNDLES

162554 - Bee My Valentine Bundle (English)

INSTRUCTIONS



TECHNIQUES:

- Fussy cutting

PAGE #: 10

CRAFTER LEVEL: Avid

CARD BASE SIZE:

PAPER

159276 - Basic White 8-1/2" X 11" Cardstock, 162546 - Bee Mine 12" X 12" (30.5 X 30.5 Cm) Designer Series Paper, 162559 - Square Pillow Boxes

INK

147094 - Daffodil Delight Classic Stampin' Pad, 147108 - Petal Pink Classic Stampin' Pad

TOOLS

104430 - Stampin' Dimensionals, 110755 - Multipurpose Liquid Glue, 126185 - Stampin' Spritzer, 144108 - Mini Stampin' Dimensionals, 161185 - Reach For The Stars Dies

EMBELLISHMENTS

162557 - Adhesive-Backed Hearts & Flowers, 162558 - Sweet Sorbet 1/4" (6.4 Mm) Bordered Ribbon

BUNDLES

162554 - Bee My Valentine Bundle (English)

INSTRUCTIONS



TECHNIQUES:

- Fussy cutting

PAGE #: 10

CRAFTER LEVEL: Avid

CARD BASE SIZE: Notecard

PAPER

119683 - Daffodil Delight 8-1/2" X 11" Cardstock, 122924 - Pool Party 8-1/2" X 11" Cardstock, 159276 - Basic White 8-1/2" X 11" Cardstock

INK

132708 - Tuxedo Black Memento Ink Pad, 147094 - Daffodil Delight Classic Stampin' Pad, 147107 - Pool Party Classic Stampin' Pad, 147145 - Lemon Lime Twist Classic Stampin' Pad

TOOLS

104430 - Stampin' Dimensionals, 110755 - Multipurpose Liquid Glue, 161597 - Nested Essentials Dies

EMBELLISHMENTS

162557 - Adhesive-Backed Hearts & Flowers

BUNDLES

162554 - Bee My Valentine Bundle (English)

INSTRUCTIONS



TECHNIQUES:

- Other

PAGE #: 11

CRAFTER LEVEL: Avid

CARD BASE SIZE: Standard A2

PAPER

122924 - Pool Party 8-1/2" X 11" Cardstock, 144245 - Lemon Lime Twist 8-1/2" X 11" Cardstock, 146990 - Granny Apple Green 8-1/2" X 11" Cardstock, 159276 - Basic White 8-1/2" X 11" Cardstock, 160839 - Vellum Basics 12" X 12" (30.5 X 30.5 Cm) Specialty Designer Series Paper

INK

147089 - Garden Green Classic Stampin' Pad, 147277 - Uninked Stampin' Pad & Whisper White Refill, 154893 - Petal Pink Stampin' Blends Combo Pack, 154894 - Pool Party Stampin' Blends Combo Pack, 154904 - Smoky Slate Stampin' Blends Combo Pack, 159224 - Sweet Sorbet Stampin' Blends Combo Pack, 161682 - Lemon Lime Twist Stampin' Blends Combo Pack

TOOLS

104430 - Stampin' Dimensionals, 110755 - Multipurpose Liquid Glue, 152813 - Stampin' Seal

EMBELLISHMENTS

162557 - Adhesive-Backed Hearts & Flowers

BUNDLES

162880 - Sending Love Bundle (English)

INSTRUCTIONS



TECHNIQUES:

- Create your own DSP
- Other
- Stampin' Blends Coloring

PAGE #: 11

CRAFTER LEVEL: Casual

CARD BASE SIZE: Mini Slim

PAPER

146985 - Petal Pink 8-1/2" X 11" Cardstock, 159276 - Basic White 8-1/2" X 11" Cardstock

INK

132708 - Tuxedo Black Memento Ink Pad, 147108 - Petal Pink Classic Stampin' Pad, 154883 - Daffodil Delight Stampin' Blends Combo Pack, 154893 - Petal Pink Stampin' Blends Combo Pack, 154894 - Pool Party Stampin' Blends Combo Pack

TOOLS

104430 - Stampin' Dimensionals, 152813 - Stampin' Seal

EMBELLISHMENTS

155475 - Baker's Twine Essentials Pack, 162758 - Rainbow Adhesive-Backed Dots

BUNDLES

162880 - Sending Love Bundle (English)

INSTRUCTIONS



TECHNIQUES:

- Create your own DSP
- Other

PAGE #: 11

CRAFTER LEVEL: Avid

CARD BASE SIZE: Standard A2

PAPER

120953 - Crumb Cake 8-1/2" X 11" Cardstock, 144245 - Lemon Lime Twist 8-1/2" X 11" Cardstock, 159276 - Basic White 8-1/2" X 11" Cardstock

INK

101406 - Jet Black Stāzon Pad, 147094 - Daffodil Delight Classic Stampin' Pad, 147107 - Pool Party Classic Stampin' Pad, 147108 - Petal Pink Classic Stampin' Pad, 147116 - Crumb Cake Classic Stampin' Pad, 147145 - Lemon Lime Twist Classic Stampin' Pad, 159216 - Sweet Sorbet Classic Stampin' Pad

TOOLS

104430 - Stampin' Dimensionals, 110755 - Multipurpose Liquid Glue, 152813 - Stampin' Seal, 154031 - Tear & Tape Adhesive

EMBELLISHMENTS

159963 - Festive Pearls

BUNDLES

162880 - Sending Love Bundle (English)

INSTRUCTIONS

Mailbox, flag and package are all ink blended. Additional color added to post and grass with same ink colors and blending brush. Package is detail envelope backwards, plus bow.



TECHNIQUES:

- Blending Brushes
- Other

PAGE #: 12

CRAFTER LEVEL: Avid

CARD BASE SIZE: Standard A2

PAPER

159276 - Basic White 8-1/2" X 11" Cardstock, 161449 - Bright & Beautiful 6" X 6" (15.2 X 15.2 Cm) Designer Series Paper

INK

147143 - Berry Burst Classic Stampin' Pad

TOOLS

104430 - Stampin' Dimensionals, 110755 - Multipurpose Liquid Glue, 141825 - Foam Adhesive Strips, 158655 - Quatrefoil Tile Embossing Folder, 162607 - Perennial Postage Dies

EMBELLISHMENTS

142314 - Window Sheets, 159200 - Sweet Sorbet 1/8" (3.2 Mm) Metallic Woven Ribbon, 161625 - Iridescent Shaker Circles, 161626 - Loose Silver Sequins

BUNDLES

162889 - Heartfelt Hexagon Bundle (English)

INSTRUCTIONS



TECHNIQUES:

- Stamping off

PAGE #: 12

CRAFTER LEVEL: Avid

CARD BASE SIZE: Notecard

PAPER

131297 - Coastal Cabana 8-1/2" X 11" Cardstock, 144243 - Berry Burst 8-1/2" X 11" Cardstock, 146985 - Petal Pink 8-1/2" X 11" Cardstock, 159276 - Basic White 8-1/2" X 11" Cardstock, 162573 - Forever Love 12" X 12" (30.5 X 30.5 Cm) Specialty Designer Series Paper, 162813 - Three Color Glimmer 12" X 12" (30.5 X 30.5 Cm) Specialty Paper

INK

102283 - Versamark Pad, 147097 - Coastal Cabana Classic Stampin' Pad, 147143 - Berry Burst Classic Stampin' Pad

TOOLS

104430 - Stampin' Dimensionals, 110755 - Multipurpose Liquid Glue, 155371 - Artistic Dies, 162857 - Hooray For Surprises Dies

EMBELLISHMENTS

155554 - Basics Embossing Powders

BUNDLES

162889 - Heartfelt Hexagon Bundle (English)

INSTRUCTIONS



TECHNIQUES:

- Fussy cutting

PAGE #: 12

CRAFTER LEVEL: Casual

CARD BASE SIZE:

PAPER

133679 - Lost Lagoon 8-1/2" X 11" Cardstock, 159276 - Basic White 8-1/2" X 11" Cardstock, 161751 - Scalloped Gift Card Boxes, 162814 - Poetic Expressions 12" X 12" (30.5 X 30.5 Cm) Designer Series Paper

INK

147143 - Berry Burst Classic Stampin' Pad

TOOLS

104430 - Stampin' Dimensionals, 154031 - Tear & Tape Adhesive, 162666 - Stippled Roses Dies

BUNDLES

162889 - Heartfelt Hexagon Bundle (English)

INSTRUCTIONS



TECHNIQUES:

- Other

PAGE #: 13 **CRAFTER LEVEL:** Casual **CARD BASE SIZE:** Square 4"

PAPER

131297 - Coastal Cabana 8-1/2" X 11" Cardstock, 133679 - Lost Lagoon 8-1/2" X 11" Cardstock, 146985 - Petal Pink 8-1/2" X 11" Cardstock, 159276 - Basic White 8-1/2" X 11" Cardstock, 162747 - Lighter Than Air 6" X 6" (15.2 X 15.2 Cm) Designer Series Paper

INK

147143 - Berry Burst Classic Stampin' Pad, 161678 - Lost Lagoon Classic Stampin' Pad

TOOLS

104430 - Stampin' Dimensionals, 110755 - Multipurpose Liquid Glue, 152813 - Stampin' Seal

BUNDLES

162858 - Hooray For Surprises Bundle (English)

INSTRUCTIONS



TECHNIQUES:

- Other

PAGE #: 13 **CRAFTER LEVEL:** Avid **CARD BASE SIZE:**

PAPER

102210 - 6" X 8" (15.2 X 20.3 Cm) Cellophane Bags, 159276 - Basic White 8-1/2" X 11" Cardstock, 162814 - Poetic Expressions 12" X 12" (30.5 X 30.5 Cm) Designer Series Paper

INK

102283 - Versamark Pad

TOOLS

104430 - Stampin' Dimensionals, 154031 - Tear & Tape Adhesive

EMBELLISHMENTS

155554 - Basics Embossing Powders, 161171 - Lost Lagoon 1/4" (6.4 Mm) Bordered Ribbon, 162557 - Adhesive-Backed Hearts & Flowers

BUNDLES

162858 - Hooray For Surprises Bundle (English)

INSTRUCTIONS

Box size: 3 1/2 x 3

Box: 6 x 7 1/4

Scored: 1 1/4 each side

Scored: 3 and 4 1/2

Cut flaps



TECHNIQUES:

- Other

PAGE #: 13 **CRAFTER LEVEL:** Avid **CARD BASE SIZE:** Standard A2

PAPER

131297 - Coastal Cabana 8-1/2" X 11" Cardstock, 144243 - Berry Burst 8-1/2" X 11" Cardstock, 146985 - Petal Pink 8-1/2" X 11" Cardstock, 159276 - Basic White 8-1/2" X 11" Cardstock

INK

147097 - Coastal Cabana Classic Stampin' Pad, 147108 - Petal Pink Classic Stampin' Pad, 147143 - Berry Burst Classic Stampin' Pad

TOOLS

104430 - Stampin' Dimensionals, 110755 - Multipurpose Liquid Glue, 144108 - Mini Stampin' Dimensionals, 161456 - Beautiful Balloons Dies

EMBELLISHMENTS

158987 - Iridescent Pearl Basic Jewels

BUNDLES

162858 - Hooray For Surprises Bundle (English)

INSTRUCTIONS

Card size: 4 1/4 x 5



TECHNIQUES:

- Fussy cutting

PAGE #: 14 **CRAFTER LEVEL:** Casual **CARD BASE SIZE:** Mini Slim

STAMPS

162574 - Lifetime Of Love Cling Stamp Set (English)

PAPER

101650 - Very Vanilla 8-1/2" X 11" Cardstock, 162573 - Forever Love 12" X 12" (30.5 X 30.5 Cm) Specialty Designer Series Paper, 162589 - Gold Foiled Flowers Cards & Envelopes

INK

161649 - Moody Mauve Classic Stampin' Pad

TOOLS

104430 - Stampin' Dimensionals, 152813 - Stampin' Seal, 160693 - Happy Labels Pick A Punch

INSTRUCTIONS

The vanilla layer is the flap of the envelopes (#162589)



TECHNIQUES:

- Fussy cutting
- Modify base product

PAGE #: 14

CRAFTER LEVEL: Avid

CARD BASE SIZE: Standard A2

PAPER

101650 - Very Vanilla 8-1/2" X 11" Cardstock, 122924 - Pool Party 8-1/2" X 11" Cardstock, 133679 - Lost Lagoon 8-1/2" X 11" Cardstock, 146985 - Petal Pink 8-1/2" X 11" Cardstock, 162589 - Gold Foiled Flowers Cards & Envelopes

INK

150083 - Pretty Peacock Classic Stampin' Pad, 154893 - Petal Pink Stampin' Blends Combo Pack, 154894 - Pool Party Stampin' Blends Combo Pack

TOOLS

103683 - Mini Glue Dots, 104430 - Stampin' Dimensionals, 161354 - 2-3/8" (6 Cm) Circle Punch

EMBELLISHMENTS

162587 - Petal Pink & Pretty Peacock Foiled Gems, 162588 - Pretty Peacock & Gold 3/8" (1 Cm) Metallic Ribbon

BUNDLES

162584 - Lifetime Of Love Bundle (English)

INSTRUCTIONS



TECHNIQUES:

- Stampin' Blends Coloring

PAGE #: 14

CRAFTER LEVEL: Casual

CARD BASE SIZE: Notecard

PAPER

101650 - Very Vanilla 8-1/2" X 11" Cardstock, 162573 - Forever Love 12" X 12" (30.5 X 30.5 Cm) Specialty Designer Series Paper

INK

102283 - Versamark Pad, 161649 - Moody Mauve Classic Stampin' Pad

TOOLS

104430 - Stampin' Dimensionals, 110755 - Multipurpose Liquid Glue, 152813 - Stampin' Seal

EMBELLISHMENTS

155555 - Metallics Embossing Powders, 162587 - Petal Pink & Pretty Peacock Foiled Gems

BUNDLES

162584 - Lifetime Of Love Bundle (English)

INSTRUCTIONS



TECHNIQUES:

- Other

PAGE #: 14

CRAFTER LEVEL: Avid

CARD BASE SIZE: Square 4"

PAPER

101650 - Very Vanilla 8-1/2" X 11" Cardstock, 101856 - Vellum 8-1/2" X 11" Cardstock, 132622 - Gold Foil Sheets, 149612 - Fluid 100 Watercolor Paper, 150880 - Pretty Peacock 8-1/2" X 11" Cardstock, 162573 - Forever Love 12" X 12" (30.5 X 30.5 Cm) Specialty Designer Series Paper

INK

101406 - Jet Black Stāzon Pad, 147107 - Pool Party Classic Stampin' Pad, 147108 - Petal Pink Classic Stampin' Pad, 150083 - Pretty Peacock Classic Stampin' Pad, 161649 - Moody Mauve Classic Stampin' Pad

TOOLS

103683 - Mini Glue Dots, 104430 - Stampin' Dimensionals, 151298 - Water Painters, 152813 - Stampin' Seal

EMBELLISHMENTS

162587 - Petal Pink & Pretty Peacock Foiled Gems, 162588 - Pretty Peacock & Gold 3/8" (1 Cm) Metallic Ribbon

BUNDLES

162584 - Lifetime Of Love Bundle (English)

INSTRUCTIONS



TECHNIQUES:

- Watercolor • Detailed

PAGE #: 14

CRAFTER LEVEL: Avid

CARD BASE SIZE: Standard A2

PAPER

101650 - Very Vanilla 8-1/2" X 11" Cardstock, 132622 - Gold Foil Sheets, 162573 - Forever Love 12" X 12" (30.5 X 30.5 Cm) Specialty Designer Series Paper, 162589 - Gold Foiled Flowers Cards & Envelopes

INK

102283 - Versamark Pad, 150083 - Pretty Peacock Classic Stampin' Pad, 161676 - Pretty Peacock Stampin' Blends Combo Pack

TOOLS

103683 - Mini Glue Dots, 104430 - Stampin' Dimensionals, 161471 - Countryside Corners Dies

EMBELLISHMENTS

155555 - Metallics Embossing Powders, 162587 - Petal Pink & Pretty Peacock Foiled Gems

BUNDLES

162584 - Lifetime Of Love Bundle (English)

INSTRUCTIONS

Gold foil card base is colored with the light peacock blend.



TECHNIQUES:

- Other

PAGE #: 16

CRAFTER LEVEL: Avid

CARD BASE SIZE:

PAPER

101650 - Very Vanilla 8-1/2" X 11" Cardstock, 122924 - Pool Party 8-1/2" X 11" Cardstock, 159276 - Basic White 8-1/2" X 11" Cardstock, 162573 - Forever Love 12" X 12" (30.5 X 30.5 Cm) Specialty Designer Series Paper

INK

132708 - Tuxedo Black Memento Ink Pad, 154893 - Petal Pink Stampin' Blends Combo Pack, 154894 - Pool Party Stampin' Blends Combo Pack, 161649 - Moody Mauve Classic Stampin' Pad, 161660 - Moody Mauve Stampin' Blends Combo Pack, 161676 - Pretty Peacock Stampin' Blends Combo Pack

TOOLS

103683 - Mini Glue Dots, 104430 - Stampin' Dimensionals, 154031 - Tear & Tape Adhesive, 161354 - 2-3/8" (6 Cm) Circle Punch

EMBELLISHMENTS

155475 - Baker's Twine Essentials Pack, 162588 - Pretty Peacock & Gold 3/8" (1 Cm) Metallic Ribbon

BUNDLES

162584 - Lifetime Of Love Bundle (English)

INSTRUCTIONS



TECHNIQUES:

- Other

PAGE #: 16

CRAFTER LEVEL: Avid

CARD BASE SIZE: Standard A2

PAPER

101650 - Very Vanilla 8-1/2" X 11" Cardstock, 101856 - Vellum 8-1/2" X 11" Cardstock, 162573 - Forever Love 12" X 12" (30.5 X 30.5 Cm) Specialty Designer Series Paper

INK

147108 - Petal Pink Classic Stampin' Pad, 150083 - Pretty Peacock Classic Stampin' Pad, 161649 - Moody Mauve Classic Stampin' Pad, 161678 - Lost Lagoon Classic Stampin' Pad

TOOLS

103683 - Mini Glue Dots, 104430 - Stampin' Dimensionals, 110755 - Multipurpose Liquid Glue, 133773 - Sponge Daubers, 152813 - Stampin' Seal, 159173 - Deckled Rectangles Dies

EMBELLISHMENTS

162587 - Petal Pink & Pretty Peacock Foiled Gems

BUNDLES

162584 - Lifetime Of Love Bundle (English)

INSTRUCTIONS

The floral pieces are cut from the oval frame die cut. Colored with sponge daubers.



TECHNIQUES:

- Fussy cutting
- Sponging

PAGE #: 17

CRAFTER LEVEL: Avid

CARD BASE SIZE: Square 4"

PAPER

101650 - Very Vanilla 8-1/2" X 11" Cardstock, 120953 - Crumb Cake 8-1/2" X 11" Cardstock, 146985 - Petal Pink 8-1/2" X 11" Cardstock, 159276 - Basic White 8-1/2" X 11" Cardstock

INK

147116 - Crumb Cake Classic Stampin' Pad, 161649 - Moody Mauve Classic Stampin' Pad

TOOLS

104430 - Stampin' Dimensionals, 110755 - Multipurpose Liquid Glue, 149699 - Stampin' Seal+

BUNDLES

162680 - Delicate Forest Bundle (English)

INSTRUCTIONS



TECHNIQUES:

- Other

PAGE #: 17

CRAFTER LEVEL: Avid

CARD BASE SIZE: Notecard

PAPER

101650 - Very Vanilla 8-1/2" X 11" Cardstock, 133679 - Lost Lagoon 8-1/2" X 11" Cardstock, 150880 - Pretty Peacock 8-1/2" X 11" Cardstock, 161723 - Moody Mauve 8-1/2" X 11" Cardstock

INK

150083 - Pretty Peacock Classic Stampin' Pad, 161649 - Moody Mauve Classic Stampin' Pad, 161678 - Lost Lagoon Classic Stampin' Pad, 161698 - Subtles Stampin' Write Markers

TOOLS

104430 - Stampin' Dimensionals, 110755 - Multipurpose Liquid Glue, 144108 - Mini Stampin' Dimensionals, 160518 - Small Blending Brushes

EMBELLISHMENTS

161627 - Neutrals Adhesive-Backed Sequins

BUNDLES

162680 - Delicate Forest Bundle (English)

INSTRUCTIONS



TECHNIQUES:

- Blending Brushes
- Heat Embossing
- Splattering

PAGE #: 17

CRAFTER LEVEL: Casual

CARD BASE SIZE: Standard A4

PAPER

150880 - Pretty Peacock 8-1/2" X 11" Cardstock, 162931 - Sweet Thoughts Memories & More Cards & Envelopes

INK

147108 - Petal Pink Classic Stampin' Pad, 147277 - Uninked Stampin' Pad & Whisper White Refill, 161649 - Moody Mauve Classic Stampin' Pad

TOOLS

104430 - Stampin' Dimensionals, 144108 - Mini Stampin' Dimensionals

EMBELLISHMENTS

155554 - Basics Embossing Powders, 158136 - Brushed Brass Butterflies

BUNDLES

162680 - Delicate Forest Bundle (English)

INSTRUCTIONS



TECHNIQUES:

- Heat Embossing
- Stamping off

PAGE #: 19

CRAFTER LEVEL: Avid

CARD BASE SIZE: Standard A2

PAPER

133679 - Lost Lagoon 8-1/2" X 11" Cardstock, 159276 - Basic White 8-1/2" X 11" Cardstock, 162616 - Nature's Sweetness 12" X 12" (30.5 X 30.5 Cm) Specialty Designer Series Paper

INK

147101 - Calypso Coral Classic Stampin' Pad, 147108 - Petal Pink Classic Stampin' Pad, 161651 - Wild Wheat Classic Stampin' Pad, 161666 - Lemon Lolly Classic Stampin' Pad, 161678 - Lost Lagoon Classic Stampin' Pad

TOOLS

104430 - Stampin' Dimensionals, 110755 - Multipurpose Liquid Glue, 151298 - Water Painters, 152813 - Stampin' Seal, 162927 - Thoughtful Moments Hybrid Embossing Folder (English), 162936 - Stampin' Brayer

EMBELLISHMENTS

162644 - Gold 1/8" (3.2 Mm) Faux Leather Trim, 162824 - Champagne Iridescent Dots

BUNDLES

161371 - Darling Details Bundle

INSTRUCTIONS

Use brayer to add color to DSP, embossing folder and white cardstock. Add color to sentiment after inked and die cut.



TECHNIQUES:

- Stamping off
- Watercolor • Wash

PAGE #: 19

CRAFTER LEVEL: Avid

CARD BASE SIZE: Standard A2

PAPER

120953 - Crumb Cake 8-1/2" X 11" Cardstock, 133679 - Lost Lagoon 8-1/2" X 11" Cardstock, 146985 - Petal Pink 8-1/2" X 11" Cardstock, 159276 - Basic White 8-1/2" X 11" Cardstock, 161725 - Wild Wheat 8-1/2" X 11" Cardstock

INK

102283 - Versamark Pad, 132708 - Tuxedo Black Memento Ink Pad, 154893 - Petal Pink Stampin' Blends Combo Pack, 161661 - Wild Wheat Stampin' Blends Combo Pack, 161680 - Lost Lagoon Stampin' Blends Combo Pack

TOOLS

104430 - Stampin' Dimensionals, 110755 - Multipurpose Liquid Glue, 141825 - Foam Adhesive Strips, 152813 - Stampin' Seal, 153611 - Blending Brushes

EMBELLISHMENTS

142314 - Window Sheets, 155555 - Metallics Embossing Powders, 161517 - Natural 1/4" (6.4 Mm) Wavy Trim, 162842 - Iridescent Foil Gems

BUNDLES

162570 - Adoring Hearts Bundle (English)

INSTRUCTIONS

Card size: Slim, 6 x 3 3/4

Use blending brush to add white ink over embossing.



TECHNIQUES:

- Blending Brushes
- Fussy cutting
- Stampin' Blends Coloring

PAGE #: 19

CRAFTER LEVEL: Avid

CARD BASE SIZE: Standard A2

PAPER

120953 - Crumb Cake 8-1/2" X 11" Cardstock, 133679 - Lost Lagoon 8-1/2" X 11" Cardstock, 159276 - Basic White 8-1/2" X 11" Cardstock

INK

101406 - Jet Black Stāzon Pad, 101780 - White Craft Stampin' Ink Refill, 102283 - Versamark Pad, 147108 - Petal Pink Classic Stampin' Pad, 161666 - Lemon Lolly Classic Stampin' Pad, 161695 - 2023–2025 In Color Stampin' Write Markers

TOOLS

104430 - Stampin' Dimensionals, 110755 - Multipurpose Liquid Glue, 151298 - Water Painters, 159183 - Stylish Shapes Dies, 162936 - Stampin' Brayer

EMBELLISHMENTS

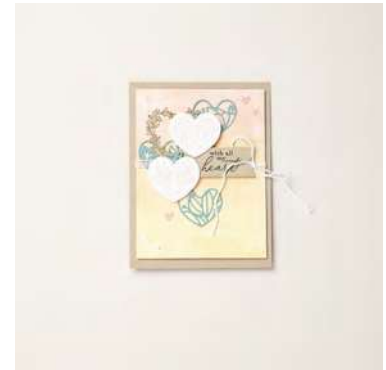
155475 - Baker's Twine Essentials Pack, 155555 - Metallics Embossing Powders, 162557 - Adhesive-Backed Hearts & Flowers

BUNDLES

162570 - Adoring Hearts Bundle (English)

INSTRUCTIONS

Ink up folder with brayer. Ink paper with brayer. Splatter with white and wild wheat.



TECHNIQUES:

- Other
- Splattering

PAGE #: 19

CRAFTER LEVEL: Avid

CARD BASE SIZE: Square 3"

PAPER

133679 - Lost Lagoon 8-1/2" X 11" Cardstock, 146985 - Petal Pink 8-1/2" X 11" Cardstock, 159276 - Basic White 8-1/2" X 11" Cardstock, 161304 - Zoo Crew 12" X 12" (30.5 X 30.5 Cm) Designer Series Paper, 161725 - Wild Wheat 8-1/2" X 11" Cardstock

INK

101406 - Jet Black Stāzon Pad, 147101 - Calypso Coral Classic Stampin' Pad, 147108 - Petal Pink Classic Stampin' Pad, 154893 - Petal Pink Stampin' Blends Combo Pack, 161651 - Wild Wheat Classic Stampin' Pad, 161661 - Wild Wheat Stampin' Blends Combo Pack, 161680 - Lost Lagoon Stampin' Blends Combo Pack

TOOLS

104430 - Stampin' Dimensionals, 110755 - Multipurpose Liquid Glue, 152813 - Stampin' Seal, 162927 - Thoughtful Moments Hybrid Embossing Folder (English), 162936 - Stampin' Brayer

EMBELLISHMENTS

161637 - 2023–2025 In Color Jute Trim, 162709 - Adhesive-Backed Lightning & Stars

INSTRUCTIONS

Brayer inked folder. Brayer inked paper for rainbows. Blends used to color DSP.



TECHNIQUES:

- Other

PAGE #: 20

CRAFTER LEVEL: Avid

CARD BASE SIZE: Square 4"

STAMPS

162682 - Hills Of Tuscany Photopolymer Stamp Set (English)

PAPER

120953 - Crumb Cake 8-1/2" X 11" Cardstock, 159276 - Basic White 8-1/2" X 11" Cardstock, 162828 - Just Kiddin' 12" X 12" (30.5 X 30.5 Cm) Designer Series Paper

INK

147087 - Crushed Curry Classic Stampin' Pad, 147090 - Old Olive Classic Stampin' Pad, 147101 - Calypso Coral Classic Stampin' Pad, 147107 - Pool Party Classic Stampin' Pad, 147111 - Mossy Meadow Classic Stampin' Pad, 159216 - Sweet Sorbet Classic Stampin' Pad

TOOLS

104430 - Stampin' Dimensionals, 110755 - Multipurpose Liquid Glue, 162740 - Garden Meadow Dies

INSTRUCTIONS



TECHNIQUES:

- Other

PAGE #: 20

CRAFTER LEVEL: Avid

CARD BASE SIZE:

STAMPS

162682 - Hills Of Tuscany Photopolymer Stamp Set (English)

PAPER

122925 - Calypso Coral 8-1/2" X 11" Cardstock, 159276 - Basic White 8-1/2" X 11" Cardstock, 161640 - Delightfully Eclectic 12" X 12" (30.5 X 30.5 Cm) Designer Series Paper

INK

102283 - Versamark Pad, 147087 - Crushed Curry Classic Stampin' Pad, 147090 - Old Olive Classic Stampin' Pad, 147101 - Calypso Coral Classic Stampin' Pad, 147111 - Mossy Meadow Classic Stampin' Pad, 159216 - Sweet Sorbet Classic Stampin' Pad

TOOLS

103683 - Mini Glue Dots, 104430 - Stampin' Dimensionals, 154031 - Tear & Tape Adhesive, 162888 - Heartfelt Hexagon Punch

EMBELLISHMENTS

162558 - Sweet Sorbet 1/4" (6.4 Mm) Bordered Ribbon

INSTRUCTIONS

Gift bag size: 3 x 4 1/2



TECHNIQUES:

- Other

PAGE #: 21

CRAFTER LEVEL: Avid

CARD BASE SIZE: Standard A2

PAPER

100702 - Old Olive 8-1/2" X 11" Cardstock, 120953 - Crumb Cake 8-1/2" X 11" Cardstock, 132622 - Gold Foil Sheets, 133676 - Mossy Meadow 8-1/2" X 11" Cardstock, 159276 - Basic White 8-1/2" X 11" Cardstock, 162616 - Nature's Sweetness 12" X 12" (30.5 X 30.5 Cm) Specialty Designer Series Paper

INK

147087 - Crushed Curry Classic Stampin' Pad, 147101 - Calypso Coral Classic Stampin' Pad, 147107 - Pool Party Classic Stampin' Pad, 159216 - Sweet Sorbet Classic Stampin' Pad

TOOLS

102845 - Blender Pens, 103683 - Mini Glue Dots, 104430 - Stampin' Dimensionals, 110755 - Multipurpose Liquid Glue, 152813 - Stampin' Seal, 162583 - Lifetime Of Love Dies

EMBELLISHMENTS

155766 - Simply Elegant Trim, 158827 - Glossy Dots Assortment

BUNDLES

162655 - Wild Ferns Bundle (English)

INSTRUCTIONS



TECHNIQUES:

- Blender Pen Coloring

PAGE #: 21 **CRAFTER LEVEL:** Casual **CARD BASE SIZE:** Square 3"

PAPER

131199 - Crushed Curry 8-1/2" X 11" Cardstock, 159268 - Sweet Sorbet 8-1/2" X 11" Cardstock, 159276 - Basic White 8-1/2" X 11" Cardstock, 161322 - Les Shoppes 12" X 12" (30.5 X 30.5 Cm) Designer Series Paper

INK

102283 - Versamark Pad, 147087 - Crushed Curry Classic Stampin' Pad

TOOLS

104430 - Stampin' Dimensionals, 152813 - Stampin' Seal

EMBELLISHMENTS

155554 - Basics Embossing Powders, 162557 - Adhesive-Backed Hearts & Flowers

BUNDLES

162655 - Wild Ferns Bundle (English)

INSTRUCTIONS



TECHNIQUES:

- Stamping off

PAGE #: 21 **CRAFTER LEVEL:** Avid **CARD BASE SIZE:**

PAPER

122924 - Pool Party 8-1/2" X 11" Cardstock, 149612 - Fluid 100 Watercolor Paper, 159229 - Basic White 8-1/2" X 11" Thick Cardstock, 160839 - Vellum Basics 12" X 12" (30.5 X 30.5 Cm) Specialty Designer Series Paper

INK

147087 - Crushed Curry Classic Stampin' Pad, 147107 - Pool Party Classic Stampin' Pad

TOOLS

104430 - Stampin' Dimensionals, 110755 - Multipurpose Liquid Glue, 149699 - Stampin' Seal+, 151298 - Water Painters, 154031 - Tear & Tape Adhesive, 155560 - Scalloped Contours Dies

EMBELLISHMENTS

158827 - Glossy Dots Assortment, 160430 - Pool Party 3/8" (1 Cm) Grosgrain Ribbon

BUNDLES

162655 - Wild Ferns Bundle (English)

INSTRUCTIONS

Gift box size: 3 1/2 x 4 3/4



TECHNIQUES:

- Other

PAGE #: 22 **CRAFTER LEVEL:** Avid **CARD BASE SIZE:** Standard A2

PAPER

155613 - Fresh Freesia 8-1/2" X 11" Cardstock, 159276 - Basic White 8-1/2" X 11" Cardstock, 162593 - Perennial Lavender 12" X 12" (30.5 X 30.5 Cm) Designer Series Paper

INK

102283 - Versamark Pad, 147088 - Shaded Spruce Classic Stampin' Pad, 147099 - Gorgeous Grape Classic Stampin' Pad, 147103 - Highland Heather Classic Stampin' Pad

TOOLS

103683 - Mini Glue Dots, 104430 - Stampin' Dimensionals, 152813 - Stampin' Seal

BUNDLES

162597 - Painted Lavender Bundle, 162608 - Perennial Postage Bundle (English)

INSTRUCTIONS

Take the embossed die and press into gorgeous grape ink pad. Use tweezers to place on top of layer and run through machine. Use versamark on die edge to distress.



TECHNIQUES:

- Distressing

PAGE #: 22 **CRAFTER LEVEL:** Avid **CARD BASE SIZE:** Standard A4

PAPER

101856 - Vellum 8-1/2" X 11" Cardstock, 120953 - Crumb Cake 8-1/2" X 11" Cardstock, 146987 - Gorgeous Grape 8-1/2" X 11" Cardstock, 162593 - Perennial Lavender 12" X 12" (30.5 X 30.5 Cm) Designer Series Paper, 162612 - Paper Butterfly Accents

INK

102283 - Versamark Pad, 147143 - Berry Burst Classic Stampin' Pad

TOOLS

104430 - Stampin' Dimensionals, 110755 - Multipurpose Liquid Glue, 133773 - Sponge Daubers, 152813 - Stampin' Seal

EMBELLISHMENTS

155554 - Basics Embossing Powders, 160386 - Real Red & Burlap Ribbon Combo Pack, 162611 - Purple Fine Shimmer Gems

BUNDLES

162608 - Perennial Postage Bundle (English)

INSTRUCTIONS

Add berry burst ink to paper butterflies with sponge dauber.



TECHNIQUES:

- Heat Embossing
- Modifying Embellishments

PAGE #: 22

CRAFTER LEVEL: Avid

CARD BASE SIZE:

PAPER

120953 - Crumb Cake 8-1/2" X 11" Cardstock, 133679 - Lost Lagoon 8-1/2" X 11" Cardstock, 146981 - Shaded Spruce 8-1/2" X 11" Cardstock, 159276 - Basic White 8-1/2" X 11" Cardstock, 162612 - Paper Butterfly Accents

INK

147088 - Shaded Spruce Classic Stampin' Pad, 147099 - Gorgeous Grape Classic Stampin' Pad, 155611 - Fresh Freesia Classic Stampin' Pad, 161665 - Pecan Pie Classic Stampin' Pad

TOOLS

103683 - Mini Glue Dots, 104430 - Stampin' Dimensionals, 110755 - Multipurpose Liquid Glue, 133773 - Sponge Daubers, 149699 - Stampin' Seal+, 151298 - Water Painters

EMBELLISHMENTS

161171 - Lost Lagoon 1/4" (6.4 Mm) Bordered Ribbon, 161517 - Natural 1/4" (6.4 Mm) Wavy Trim, 162611 - Purple Fine Shimmer Gems

BUNDLES

162597 - Painted Lavender Bundle

INSTRUCTIONS

Cut 12 - 1/2" x 7 1/2" and 2 at 1/2" x 8 1/2". Weave 10 (7 1/2" length) together. Bend 1/4" up on all ends. Take the 2 (8 1/2" length) around the edge to form a basket. Take last 2 (7 1/2" length) to cross over the center. Add pecan pie wash and splatter. Hang with 8" of trim.



TECHNIQUES:

- Modifying Embellishments
- Watercolor Wash

PAGE #: 22

CRAFTER LEVEL: Avid

CARD BASE SIZE: Standard A2

STAMPS

162594 - Painted Lavender Photopolymer Stamp Set (English)

PAPER

120953 - Crumb Cake 8-1/2" X 11" Cardstock, 133679 - Lost Lagoon 8-1/2" X 11" Cardstock, 159276 - Basic White 8-1/2" X 11" Cardstock, 162593 - Perennial Lavender 12" X 12" (30.5 X 30.5 Cm) Designer Series Paper, 162612 - Paper Butterfly Accents

INK

147088 - Shaded Spruce Classic Stampin' Pad, 147103 - Highland Heather Classic Stampin' Pad, 154887 - Highland Heather Stampin' Blends Combo Pack, 155518 - Fresh Freesia Stampin' Blends Combo Pack, 159214 - Orchid Oasis Classic Stampin' Pad, 161678 - Lost Lagoon Classic Stampin' Pad

TOOLS

103683 - Mini Glue Dots, 104430 - Stampin' Dimensionals, 152813 - Stampin' Seal

EMBELLISHMENTS

162744 - Pecan Pie 3/8" (1 Cm) Center Stripe Ribbon

BUNDLES

162608 - Perennial Postage Bundle (English)

INSTRUCTIONS



TECHNIQUES:

- Modifying Embellishments
- Stampin' Blends Coloring
- Stamping off

PAGE #: 22

CRAFTER LEVEL: Avid

CARD BASE SIZE: Notecard

PAPER

133679 - Lost Lagoon 8-1/2" X 11" Cardstock, 146986 - Highland Heather 8-1/2" X 11" Cardstock, 150880 - Pretty Peacock 8-1/2" X 11" Cardstock, 159276 - Basic White 8-1/2" X 11" Cardstock, 162593 - Perennial Lavender 12" X 12" (30.5 X 30.5 Cm) Designer Series Paper

INK

147103 - Highland Heather Classic Stampin' Pad, 150083 - Pretty Peacock Classic Stampin' Pad, 154887 - Highland Heather Stampin' Blends Combo Pack, 154903 - Shaded Spruce Stampin' Blends Combo Pack, 161681 - Berry Burst Stampin' Blends Combo Pack

TOOLS

103683 - Mini Glue Dots, 104430 - Stampin' Dimensionals, 152813 - Stampin' Seal

EMBELLISHMENTS

104199 - Linen Thread, 162611 - Purple Fine Shimmer Gems

BUNDLES

162597 - Painted Lavender Bundle, 162608 - Perennial Postage Bundle (English)

INSTRUCTIONS



TECHNIQUES:

- Stampin' Blends Coloring

PAGE #: 24

CRAFTER LEVEL: Avid

CARD BASE SIZE: Slim

PAPER

120953 - Crumb Cake 8-1/2" X 11" Cardstock, 133679 - Lost Lagoon 8-1/2" X 11" Cardstock, 146981 - Shaded Spruce 8-1/2" X 11" Cardstock, 155613 - Fresh Freesia 8-1/2" X 11" Cardstock, 162593 - Perennial Lavender 12" X 12" (30.5 X 30.5 Cm) Designer Series Paper, 162612 - Paper Butterfly Accents

INK

147088 - Shaded Spruce Classic Stampin' Pad, 155611 - Fresh Freesia Classic Stampin' Pad

TOOLS

103683 - Mini Glue Dots, 104430 - Stampin' Dimensionals, 152813 - Stampin' Seal

EMBELLISHMENTS

162611 - Purple Fine Shimmer Gems

BUNDLES

162597 - Painted Lavender Bundle, 162608 - Perennial Postage Bundle (English)

INSTRUCTIONS

Trim body off large butterfly and adhere behind another large butterfly to appear 3D. Die cut same size postage die 3 times.



TECHNIQUES:

- Modifying Embellishments

PAGE #: 24

CRAFTER LEVEL: Avid

CARD BASE SIZE:

PAPER

120953 - Crumb Cake 8-1/2" X 11" Cardstock, 146987 - Gorgeous Grape 8-1/2" X 11" Cardstock, 159276 - Basic White 8-1/2" X 11" Cardstock, 162593 - Perennial Lavender 12" X 12" (30.5 X 30.5 Cm) Designer Series Paper

INK

147099 - Gorgeous Grape Classic Stampin' Pad, 147143 - Berry Burst Classic Stampin' Pad, 155611 - Fresh Freesia Classic Stampin' Pad, 161678 - Lost Lagoon Classic Stampin' Pad

TOOLS

104430 - Stampin' Dimensionals, 110755 - Multipurpose Liquid Glue, 154031 - Tear & Tape Adhesive

EMBELLISHMENTS

155475 - Baker's Twine Essentials Pack, 161171 - Lost Lagoon 1/4" (6.4 Mm) Bordered Ribbon, 162611 - Purple Fine Shimmer Gems

BUNDLES

162597 - Painted Lavender Bundle, 162608 - Perennial Postage Bundle (English)

INSTRUCTIONS

6x6 DSP - score at 1/2" all around for box lid. 6 1/2" x 6 1/2" cardstock - score 3/4" all around for box bottom.



TECHNIQUES:

- Other

PAGE #: 24

CRAFTER LEVEL: Casual

CARD BASE SIZE: Standard A2

STAMPS

162598 - Perennial Postage Cling Stamp Set (English)

PAPER

155613 - Fresh Freesia 8-1/2" X 11" Cardstock, 159276 - Basic White 8-1/2" X 11" Cardstock, 162593 - Perennial Lavender 12" X 12" (30.5 X 30.5 Cm) Designer Series Paper

INK

147088 - Shaded Spruce Classic Stampin' Pad, 147099 - Gorgeous Grape Classic Stampin' Pad

TOOLS

103683 - Mini Glue Dots, 104430 - Stampin' Dimensionals, 152813 - Stampin' Seal

EMBELLISHMENTS

104199 - Linen Thread

BUNDLES

162597 - Painted Lavender Bundle

INSTRUCTIONS

Stamp off butterflies to get lighter tone.



TECHNIQUES:

- Stamping off

PAGE #: 25

CRAFTER LEVEL: Avid

CARD BASE SIZE:

PAPER

101856 - Vellum 8-1/2" X 11" Cardstock, 102619 - Clear Medium Envelopes, 120953 - Crumb Cake 8-1/2" X 11" Cardstock, 146981 - Shaded Spruce 8-1/2" X 11" Cardstock, 159276 - Basic White 8-1/2" X 11" Cardstock, 162593 - Perennial Lavender 12" X 12" (30.5 X 30.5 Cm) Designer Series Paper

INK

102283 - Versamark Pad, 147103 - Highland Heather Classic Stampin' Pad, 155518 - Fresh Freesia Stampin' Blends Combo Pack

TOOLS

103683 - Mini Glue Dots, 104430 - Stampin' Dimensionals

EMBELLISHMENTS

155475 - Baker's Twine Essentials Pack, 155554 - Basics Embossing Powders, 160386 - Real Red & Burlap Ribbon Combo Pack

BUNDLES

162597 - Painted Lavender Bundle, 162608 - Perennial Postage Bundle (English)

INSTRUCTIONS



TECHNIQUES:

- Heat Embossing
- Modify base product
- Stampin' Blends Coloring

PAGE #: 25

CRAFTER LEVEL: Avid

CARD BASE SIZE: Standard A4

PAPER

146986 - Highland Heather 8-1/2" X 11" Cardstock, 146987 - Gorgeous Grape 8-1/2" X 11" Cardstock, 149612 - Fluid 100 Watercolor Paper, 159276 - Basic White 8-1/2" X 11" Cardstock, 162593 - Perennial Lavender 12" X 12" (30.5 X 30.5 Cm) Designer Series Paper

INK

147088 - Shaded Spruce Classic Stampin' Pad, 147099 - Gorgeous Grape Classic Stampin' Pad, 147103 - Highland Heather Classic Stampin' Pad, 147116 - Crumb Cake Classic Stampin' Pad, 147143 - Berry Burst Classic Stampin' Pad, 155611 - Fresh Freesia Classic Stampin' Pad

TOOLS

103683 - Mini Glue Dots, 104430 - Stampin' Dimensionals, 133773 - Sponge Daubers, 151298 - Water Painters, 152813 - Stampin' Seal

EMBELLISHMENTS

155475 - Baker's Twine Essentials Pack

BUNDLES

162597 - Painted Lavender Bundle, 162608 - Perennial Postage Bundle (English)

INSTRUCTIONS

Fussy cut butterfly from DSP. Ink lavender in highland ink then add berry ink at bottom with sponge dauber. Stamp. Then stamp two step in gorgeous grape. Watercolor wash with crumb, freesia and shaded spruce.



TECHNIQUES:

- Fussy cutting
- Watercolor • Wash

PAGE #: 25

CRAFTER LEVEL: Avid

CARD BASE SIZE: Standard A2

PAPER

120953 - Crumb Cake 8-1/2" X 11" Cardstock, 150880 - Pretty Peacock 8-1/2" X 11" Cardstock, 155613 - Fresh Freesia 8-1/2" X 11" Cardstock, 159276 - Basic White 8-1/2" X 11" Cardstock, 162593 - Perennial Lavender 12" X 12" (30.5 X 30.5 Cm) Designer Series Paper, 162612 - Paper Butterfly Accents

INK

102283 - Versamark Pad, 147103 - Highland Heather Classic Stampin' Pad, 150083 - Pretty Peacock Classic Stampin' Pad

TOOLS

103683 - Mini Glue Dots, 104430 - Stampin' Dimensionals, 133773 - Sponge Daubers, 152813 - Stampin' Seal

EMBELLISHMENTS

162611 - Purple Fine Shimmer Gems

BUNDLES

162597 - Painted Lavender Bundle, 162608 - Perennial Postage Bundle (English)

INSTRUCTIONS

Swipe emboss "stamp" icon image with versamark to increase depth of embossing.



TECHNIQUES:

- Other

PAGE #: 26

CRAFTER LEVEL: Avid

CARD BASE SIZE: Standard A2

PAPER

122925 - Calypso Coral 8-1/2" X 11" Cardstock, 155613 - Fresh Freesia 8-1/2" X 11" Cardstock, 159276 - Basic White 8-1/2" X 11" Cardstock

INK

102283 - Versamark Pad, 154881 - Calypso Coral Stampin' Blends Combo Pack, 154883 - Daffodil Delight Stampin' Blends Combo Pack, 154892 - Old Olive Stampin' Blends Combo Pack, 155518 - Fresh Freesia Stampin' Blends Combo Pack, 155611 - Fresh Freesia Classic Stampin' Pad, 161675 - Bubble Bath Stampin' Blends Combo Pack

TOOLS

103683 - Mini Glue Dots, 104430 - Stampin' Dimensionals, 154031 - Tear & Tape Adhesive

EMBELLISHMENTS

155554 - Basics Embossing Powders, 162842 - Iridescent Foil Gems

BUNDLES

162786 - Easter Lilies Bundle (English)

INSTRUCTIONS



TECHNIQUES:

- Heat Embossing
- Stampin' Blends Coloring

PAGE #: 26

CRAFTER LEVEL: Avid

CARD BASE SIZE: Standard A2

PAPER

100702 - Old Olive 8-1/2" X 11" Cardstock, 101856 - Vellum 8-1/2" X 11" Cardstock, 149612 - Fluid 100 Watercolor Paper

INK

101406 - Jet Black Stāzon Pad, 102283 - Versamark Pad, 147090 - Old Olive Classic Stampin' Pad, 147094 - Daffodil Delight Classic Stampin' Pad

TOOLS

103683 - Mini Glue Dots, 104430 - Stampin' Dimensionals, 154031 - Tear & Tape Adhesive

EMBELLISHMENTS

155554 - Basics Embossing Powders, 162743 - Adhesive-Backed Dragonflies & Birds

BUNDLES

162786 - Easter Lilies Bundle (English)

INSTRUCTIONS



TECHNIQUES:

- Heat Embossing
- Watercolor • Detailed

PAGE #: 27

CRAFTER LEVEL: Avid

CARD BASE SIZE:

PAPER

122925 - Calypso Coral 8-1/2" X 11" Cardstock, 155613 - Fresh Freesia 8-1/2" X 11" Cardstock, 159276 - Basic White 8-1/2" X 11" Cardstock

INK

147101 - Calypso Coral Classic Stampin' Pad, 161675 - Bubble Bath Stampin' Blends Combo Pack

TOOLS

103683 - Mini Glue Dots, 104430 - Stampin' Dimensionals, 110755 - Multipurpose Liquid Glue, 152813 - Stampin' Seal, 154031 - Tear & Tape Adhesive

EMBELLISHMENTS

158130 - Iridescent Rhinestones Basic Jewels

BUNDLES

162808 - Excellent Eggs Bundle (English)

INSTRUCTIONS

To make the box, cut out two easter eggs and make a strip of cardstock to glue to both eggs. 11 x 1 1/4, scored at 3/8 on both ends, then cut the edges with strips all the way down both sides.

Both pink layers are from the bubble blends.



TECHNIQUES:

- Fussy cutting
- Stampin' Blends Coloring

PAGE #: 27

CRAFTER LEVEL: Avid

CARD BASE SIZE: Square 3"

PAPER

100702 - Old Olive 8-1/2" X 11" Cardstock, 119683 - Daffodil Delight 8-1/2" X 11" Cardstock, 159276 - Basic White 8-1/2" X 11" Cardstock

INK

102283 - Versamark Pad, 147090 - Old Olive Classic Stampin' Pad, 154883 - Daffodil Delight Stampin' Blends Combo Pack, 154892 - Old Olive Stampin' Blends Combo Pack, 161675 - Bubble Bath Stampin' Blends Combo Pack

TOOLS

103683 - Mini Glue Dots, 104430 - Stampin' Dimensionals

EMBELLISHMENTS

155555 - Metallics Embossing Powders, 161288 - Adhesive-Backed Sparkle Gems, 162759 - Baker's Twine Three Color Pack

BUNDLES

162808 - Excellent Eggs Bundle (English)

INSTRUCTIONS



TECHNIQUES:

- Heat Embossing
- Stampin' Blends Coloring

PAGE #: 27

CRAFTER LEVEL: Casual

CARD BASE SIZE: Standard A2

PAPER

119683 - Daffodil Delight 8-1/2" X 11" Cardstock, 155613 - Fresh Freesia 8-1/2" X 11" Cardstock, 159276 - Basic White 8-1/2" X 11" Cardstock, 161718 - Bubble Bath 8-1/2" X 11" Cardstock, 162747 - Lighter Than Air 6" X 6" (15.2 X 15.2 Cm) Designer Series Paper

INK

102283 - Versamark Pad, 155611 - Fresh Freesia Classic Stampin' Pad

TOOLS

103683 - Mini Glue Dots, 104430 - Stampin' Dimensionals, 152813 - Stampin' Seal

EMBELLISHMENTS

155554 - Basics Embossing Powders

BUNDLES

162808 - Excellent Eggs Bundle (English)

INSTRUCTIONS



TECHNIQUES:

- Heat Embossing

PAGE #: 28 **CRAFTER LEVEL:** Casual **CARD BASE SIZE:** Standard A2

PAPER

159276 - Basic White 8-1/2" X 11" Cardstock, 162589 - Gold Foiled Flowers Cards & Envelopes

INK

147138 - Blueberry Bushel Classic Stampin' Pad, 161665 - Pecan Pie Classic Stampin' Pad, 161700 - Watercolor Pencils Assortment 1

TOOLS

104430 - Stampin' Dimensionals, 153611 - Blending Brushes

EMBELLISHMENTS

161206 - Adhesive-Backed Sequins Trio

BUNDLES

162865 - Everyday Details Bundle

INSTRUCTIONS

Watercolor pencils used: blue, olive, pecan.



TECHNIQUES:

- Blending Brushes
- Watercolor Pencils Coloring

PAGE #: 28 **CRAFTER LEVEL:** Avid **CARD BASE SIZE:** Standard A4

PAPER

133676 - Mossy Meadow 8-1/2" X 11" Cardstock, 159276 - Basic White 8-1/2" X 11" Cardstock, 162814 - Poetic Expressions 12" X 12" (30.5 X 30.5 Cm) Designer Series Paper

INK

132708 - Tuxedo Black Memento Ink Pad, 154885 - Granny Apple Green Stampin' Blends Combo Pack, 161665 - Pecan Pie Classic Stampin' Pad, 161674 - Pecan Pie Stampin' Blends Combo Pack

TOOLS

103683 - Mini Glue Dots, 104430 - Stampin' Dimensionals, 152813 - Stampin' Seal

EMBELLISHMENTS

159195 - 2022–2024 In Color Baker's Twine Pack, 162643 - Adhesive-Backed Cork Rounds

BUNDLES

162865 - Everyday Details Bundle

INSTRUCTIONS



TECHNIQUES:

- Fussy cutting

PAGE #: 28

CRAFTER LEVEL: Avid

CARD BASE SIZE: Notecard

PAPER

133676 - Mossy Meadow 8-1/2" X 11" Cardstock, 149612 - Fluid 100 Watercolor Paper, 161717 - Pecan Pie 8-1/2" X 11" Cardstock, 162735 - Meandering Meadows 6" X 6" (15.2 X 15.2 Cm) Designer Series Paper

INK

101406 - Jet Black Stāzon Pad, 147051 - Melon Mambo Classic Stampin' Pad, 147111 - Mossy Meadow Classic Stampin' Pad, 147277 - Uninked Stampin' Pad & Whisper White Refill, 159210 - Tahitian Tide Classic Stampin' Pad

TOOLS

104430 - Stampin' Dimensionals, 151298 - Water Painters, 154031 - Tear & Tape Adhesive

EMBELLISHMENTS

104199 - Linen Thread, 155554 - Basics Embossing Powders, 162744 - Pecan Pie 3/8" (1 Cm) Center Stripe Ribbon

BUNDLES

162865 - Everyday Details Bundle

INSTRUCTIONS



TECHNIQUES:

- Heat Embossing
- Watercolor • Detailed

PAGE #: 29

CRAFTER LEVEL: Casual

CARD BASE SIZE: Standard A2

STAMPS

162692 - Blueberry Bunches Cling Stamp Set (English)

PAPER

146968 - Blueberry Bushel 8-1/2" X 11" Cardstock, 159261 - Tahitian Tide 8-1/2" X 11" Cardstock, 159276 - Basic White 8-1/2" X 11" Cardstock

INK

132708 - Tuxedo Black Memento Ink Pad, 147138 - Blueberry Bushel Classic Stampin' Pad, 154885 - Granny Apple Green Stampin' Blends Combo Pack, 159221 - Tahitian Tide Stampin' Blends Combo Pack, 161679 - Blueberry Bushel Stampin' Blends Combo Pack

TOOLS

104430 - Stampin' Dimensionals, 152813 - Stampin' Seal

EMBELLISHMENTS

158130 - Iridescent Rhinestones Basic Jewels

INSTRUCTIONS



TECHNIQUES:

- Stampin' Blends Coloring

PAGE #: 29 **CRAFTER LEVEL:** Beginner **CARD BASE SIZE:** Notecard

STAMPS

162692 - Blueberry Bunches Cling Stamp Set (English)

PAPER

159261 - Tahitian Tide 8-1/2" X 11" Cardstock, 159276 - Basic White 8-1/2" X 11" Cardstock

INK

147095 - Granny Apple Green Classic Stampin' Pad, 147138 - Blueberry Bushel Classic Stampin' Pad

TOOLS

102845 - Blender Pens, 104430 - Stampin' Dimensionals



INSTRUCTIONS

TECHNIQUES:

- Blender Pen Coloring

PAGE #: 29 **CRAFTER LEVEL:** Avid **CARD BASE SIZE:** Standard A4

STAMPS

162692 - Blueberry Bunches Cling Stamp Set (English)

PAPER

146968 - Blueberry Bushel 8-1/2" X 11" Cardstock, 149612 - Fluid 100 Watercolor Paper, 159276 - Basic White 8-1/2" X 11" Cardstock, 161747 - 2022-2024 In Color™ 12" X 12" (30.5 X 30.5 Cm) Textured Specialty Paper, 162735 - Meandering Meadows 6" X 6" (15.2 X 15.2 Cm) Designer Series Paper

INK

101406 - Jet Black Stāzon Pad, 147095 - Granny Apple Green Classic Stampin' Pad, 147111 - Mossy Meadow Classic Stampin' Pad, 147138 - Blueberry Bushel Classic Stampin' Pad, 159210 - Tahitian Tide Classic Stampin' Pad

TOOLS

103683 - Mini Glue Dots, 104430 - Stampin' Dimensionals, 152813 - Stampin' Seal, 162864 - Everyday Details Dies

EMBELLISHMENTS

158130 - Iridescent Rhinestones Basic Jewels, 159196 - Parakeet Party 1/8" (3.2 Mm) Metallic Woven Ribbon



TECHNIQUES:

- Fussy cutting
- Watercolor • Detailed

INSTRUCTIONS

Cut out 2 circles from the dies and rotate them so the dots don't show through.

PAGE #: 30

CRAFTER LEVEL: Avid

CARD BASE SIZE: Mini Slim

PAPER

120953 - Crumb Cake 8-1/2" X 11" Cardstock, 159276 - Basic White 8-1/2" X 11" Cardstock, 161289 - Fresh As A Daisy 12" X 12" (30.5 X 30.5 Cm) Designer Series Paper

INK

147090 - Old Olive Classic Stampin' Pad, 147094 - Daffodil Delight Classic Stampin' Pad, 161649 - Moody Mauve Classic Stampin' Pad, 161650 - Boho Blue Classic Stampin' Pad, 161664 - Bubble Bath Classic Stampin' Pad, 161678 - Lost Lagoon Classic Stampin' Pad

TOOLS

104430 - Stampin' Dimensionals, 152813 - Stampin' Seal

EMBELLISHMENTS

155475 - Baker's Twine Essentials Pack, 161448 - Ombre Matte Decorative Dots

BUNDLES

162781 - Flower Cart Bundle (English)

INSTRUCTIONS



TECHNIQUES:

- Stamping off

PAGE #: 30

CRAFTER LEVEL: Casual

CARD BASE SIZE: Standard A2

STAMPS

162932 - Cake Fancy Photopolymer Stamp Set (English)

PAPER

133679 - Lost Lagoon 8-1/2" X 11" Cardstock, 159276 - Basic White 8-1/2" X 11" Cardstock

INK

102283 - Versamark Pad, 161649 - Moody Mauve Classic Stampin' Pad, 161665 - Pecan Pie Classic Stampin' Pad, 161678 - Lost Lagoon Classic Stampin' Pad

TOOLS

104430 - Stampin' Dimensionals, 152813 - Stampin' Seal, 153611 - Blending Brushes, 162864 - Everyday Details Dies

EMBELLISHMENTS

155554 - Basics Embossing Powders

INSTRUCTIONS



TECHNIQUES:

- Heat Embossing
- Stamping off

PAGE #: 30

CRAFTER LEVEL: Avid

CARD BASE SIZE: Notecard

STAMPS

162932 - Cake Fancy Photopolymer Stamp Set (English)

PAPER

120953 - Crumb Cake 8-1/2" X 11" Cardstock, 159276 - Basic White 8-1/2" X 11" Cardstock, 162593 - Perennial Lavender 12" X 12" (30.5 X 30.5 Cm) Designer Series Paper

INK

147090 - Old Olive Classic Stampin' Pad, 147094 - Daffodil Delight Classic Stampin' Pad, 161649 - Moody Mauve Classic Stampin' Pad, 161665 - Pecan Pie Classic Stampin' Pad

TOOLS

103683 - Mini Glue Dots, 104430 - Stampin' Dimensionals, 152813 - Stampin' Seal, 159173 - Deckled Rectangles Dies

EMBELLISHMENTS

104199 - Linen Thread, 162758 - Rainbow Adhesive-Backed Dots

INSTRUCTIONS



TECHNIQUES:

- Fussy cutting

PAGE #: 30

CRAFTER LEVEL: Casual

CARD BASE SIZE: Standard A2

STAMPS

162932 - Cake Fancy Photopolymer Stamp Set (English)

PAPER

159276 - Basic White 8-1/2" X 11" Cardstock, 161718 - Bubble Bath 8-1/2" X 11" Cardstock, 162747 - Lighter Than Air 6" X 6" (15.2 X 15.2 Cm) Designer Series Paper

INK

102283 - Versamark Pad, 147094 - Daffodil Delight Classic Stampin' Pad, 161650 - Boho Blue Classic Stampin' Pad, 161664 - Bubble Bath Classic Stampin' Pad

TOOLS

104430 - Stampin' Dimensionals, 152813 - Stampin' Seal

EMBELLISHMENTS

155555 - Metallics Embossing Powders

INSTRUCTIONS



TECHNIQUES:

- Heat Embossing
- Stamping off

PAGE #: 31

CRAFTER LEVEL: Avid

CARD BASE SIZE: Standard A2

PAPER

101650 - Very Vanilla 8-1/2" X 11" Cardstock, 132622 - Gold Foil Sheets, 149612 - Fluid 100 Watercolor Paper, 159276 - Basic White 8-1/2" X 11" Cardstock, 161289 - Fresh As A Daisy 12" X 12" (30.5 X 30.5 Cm) Designer Series Paper, 161717 - Pecan Pie 8-1/2" X 11" Cardstock, 161718 - Bubble Bath 8-1/2" X 11" Cardstock

INK

161649 - Moody Mauve Classic Stampin' Pad, 161650 - Boho Blue Classic Stampin' Pad, 161665 - Pecan Pie Classic Stampin' Pad, 161678 - Lost Lagoon Classic Stampin' Pad

TOOLS

104430 - Stampin' Dimensionals, 110755 - Multipurpose Liquid Glue, 151298 - Water Painters, 152813 - Stampin' Seal, 154317 - Painted Texture 3D Embossing Folder, 162821 - Thoughtful Expressions Dies

EMBELLISHMENTS

161637 - 2023–2025 In Color Jute Trim

BUNDLES

162781 - Flower Cart Bundle (English)

INSTRUCTIONS

I spritzed the flower image stamps with water before stamping them to give the watercolor look.



TECHNIQUES:

• Watercolor • Wash

PAGE #: 31

CRAFTER LEVEL: Casual

CARD BASE SIZE: Standard A2

PAPER

120953 - Crumb Cake 8-1/2" X 11" Cardstock, 159276 - Basic White 8-1/2" X 11" Cardstock, 162593 - Perennial Lavender 12" X 12" (30.5 X 30.5 Cm) Designer Series Paper

INK

147090 - Old Olive Classic Stampin' Pad, 147094 - Daffodil Delight Classic Stampin' Pad, 161650 - Boho Blue Classic Stampin' Pad, 161664 - Bubble Bath Classic Stampin' Pad, 161665 - Pecan Pie Classic Stampin' Pad

TOOLS

104430 - Stampin' Dimensionals, 110755 - Multipurpose Liquid Glue

BUNDLES

162781 - Flower Cart Bundle (English)

INSTRUCTIONS



TECHNIQUES:

• Stamping off

PAGE #: 32

CRAFTER LEVEL: Avid

CARD BASE SIZE: Standard A2

PAPER

122924 - Pool Party 8-1/2" X 11" Cardstock, 146982 - Balmy Blue 8-1/2" X 11" Cardstock, 159276 - Basic White 8-1/2" X 11" Cardstock, 162747 - Lighter Than Air 6" X 6" (15.2 X 15.2 Cm) Designer Series Paper

INK

102283 - Versamark Pad, 147052 - Flirty Flamingo Classic Stampin' Pad, 147107 - Pool Party Classic Stampin' Pad, 147108 - Petal Pink Classic Stampin' Pad

TOOLS

104430 - Stampin' Dimensionals, 110755 - Multipurpose Liquid Glue, 152813 - Stampin' Seal, 153611 - Blending Brushes

EMBELLISHMENTS

155554 - Basics Embossing Powders, 162758 - Rainbow Adhesive-Backed Dots

BUNDLES

162755 - Hot Air Balloon Bundle (English)

INSTRUCTIONS



TECHNIQUES:

- Other

PAGE #: 32

CRAFTER LEVEL: Avid

CARD BASE SIZE: Standard A2

PAPER

101856 - Vellum 8-1/2" X 11" Cardstock, 155613 - Fresh Freesia 8-1/2" X 11" Cardstock, 159276 - Basic White 8-1/2" X 11" Cardstock, 162747 - Lighter Than Air 6" X 6" (15.2 X 15.2 Cm) Designer Series Paper

INK

147107 - Pool Party Classic Stampin' Pad, 155611 - Fresh Freesia Classic Stampin' Pad, 161666 - Lemon Lolly Classic Stampin' Pad

TOOLS

104430 - Stampin' Dimensionals, 110755 - Multipurpose Liquid Glue, 152813 - Stampin' Seal, 155558 - Basic Borders Dies

EMBELLISHMENTS

162759 - Baker's Twine Three Color Pack, 162842 - Iridescent Foil Gems

BUNDLES

162755 - Hot Air Balloon Bundle (English)

INSTRUCTIONS

Stagger vellum and cardstock clouds at base of card.



TECHNIQUES:

- Other

PAGE #: 32

CRAFTER LEVEL: Avid

CARD BASE SIZE:

PAPER

159276 - Basic White 8-1/2" X 11" Cardstock, 161718 - Bubble Bath 8-1/2" X 11" Cardstock, 162559 - Square Pillow Boxes, 162747 - Lighter Than Air 6" X 6" (15.2 X 15.2 Cm) Designer Series Paper

INK

147101 - Calypso Coral Classic Stampin' Pad, 147107 - Pool Party Classic Stampin' Pad, 161664 - Bubble Bath Classic Stampin' Pad

TOOLS

104430 - Stampin' Dimensionals, 110755 - Multipurpose Liquid Glue, 152813 - Stampin' Seal, 153611 - Blending Brushes

EMBELLISHMENTS

162758 - Rainbow Adhesive-Backed Dots, 162759 - Baker's Twine Three Color Pack

BUNDLES

162755 - Hot Air Balloon Bundle (English)

INSTRUCTIONS



TECHNIQUES:

- Blending Brushes

PAGE #: 32

CRAFTER LEVEL: Avid

CARD BASE SIZE: Square 3"

PAPER

101856 - Vellum 8-1/2" X 11" Cardstock, 122924 - Pool Party 8-1/2" X 11" Cardstock, 159276 - Basic White 8-1/2" X 11" Cardstock, 162747 - Lighter Than Air 6" X 6" (15.2 X 15.2 Cm) Designer Series Paper

INK

147052 - Flirty Flamingo Classic Stampin' Pad, 147108 - Petal Pink Classic Stampin' Pad

TOOLS

104430 - Stampin' Dimensionals, 110755 - Multipurpose Liquid Glue, 152813 - Stampin' Seal, 153611 - Blending Brushes

EMBELLISHMENTS

162758 - Rainbow Adhesive-Backed Dots, 162759 - Baker's Twine Three Color Pack

BUNDLES

162755 - Hot Air Balloon Bundle (English)

INSTRUCTIONS



TECHNIQUES:

- Blending Brushes

PAGE #: 32

CRAFTER LEVEL: Avid

CARD BASE SIZE: Notecard

PAPER

122924 - Pool Party 8-1/2" X 11" Cardstock, 122925 - Calypso Coral 8-1/2" X 11" Cardstock, 141416 - Flirty Flamingo 8-1/2" X 11" Cardstock, 146982 - Balmy Blue 8-1/2" X 11" Cardstock, 146985 - Petal Pink 8-1/2" X 11" Cardstock, 155613 - Fresh Freesia 8-1/2" X 11" Cardstock, 159276 - Basic White 8-1/2" X 11" Cardstock, 161718 - Bubble Bath 8-1/2" X 11" Cardstock, 161719 - Azure Afternoon 8-1/2" X 11" Cardstock, 161720 - Lemon Lolly 8-1/2" X 11" Cardstock, 162747 - Lighter Than Air 6" X 6" (15.2 X 15.2 Cm) Designer Series Paper, 162813 - Three Color Glimmer 12" X 12" (30.5 X 30.5 Cm) Specialty Paper

INK

147105 - Balmy Blue Classic Stampin' Pad, 161663 - Azure Afternoon Classic Stampin' Pad

TOOLS

104430 - Stampin' Dimensionals, 110755 - Multipurpose Liquid Glue, 152813 - Stampin' Seal

EMBELLISHMENTS

162758 - Rainbow Adhesive-Backed Dots

BUNDLES

162755 - Hot Air Balloon Bundle (English)

INSTRUCTIONS

Cut strips 1/8". Lay down in spectrum order.



TECHNIQUES:

- Other

PAGE #: 34

CRAFTER LEVEL: Avid

CARD BASE SIZE: Standard A2

PAPER

155613 - Fresh Freesia 8-1/2" X 11" Cardstock, 159276 - Basic White 8-1/2" X 11" Cardstock, 161718 - Bubble Bath 8-1/2" X 11" Cardstock, 162747 - Lighter Than Air 6" X 6" (15.2 X 15.2 Cm) Designer Series Paper

INK

155611 - Fresh Freesia Classic Stampin' Pad, 161664 - Bubble Bath Classic Stampin' Pad, 161666 - Lemon Lolly Classic Stampin' Pad

TOOLS

104430 - Stampin' Dimensionals, 110755 - Multipurpose Liquid Glue, 141825 - Foam Adhesive Strips, 152813 - Stampin' Seal

EMBELLISHMENTS

142314 - Window Sheets, 161626 - Loose Silver Sequins, 162758 - Rainbow Adhesive-Backed Dots, 162759 - Baker's Twine Three Color Pack

BUNDLES

162755 - Hot Air Balloon Bundle (English)

INSTRUCTIONS

Use balloon die to cut out shape of balloon on DSP. Stamp balloon without die cutting and back behind so peaks through top. Use foam adhesive.



TECHNIQUES:

- Other

PAGE #: 34

CRAFTER LEVEL: Casual

CARD BASE SIZE: Standard A2

PAPER

146982 - Balmy Blue 8-1/2" X 11" Cardstock, 159276 - Basic White 8-1/2" X 11" Cardstock, 161720 - Lemon Lolly 8-1/2" X 11" Cardstock, 162747 - Lighter Than Air 6" X 6" (15.2 X 15.2 Cm) Designer Series Paper

INK

147105 - Balmy Blue Classic Stampin' Pad, 161663 - Azure Afternoon Classic Stampin' Pad

TOOLS

104430 - Stampin' Dimensionals, 110755 - Multipurpose Liquid Glue, 152813 - Stampin' Seal

EMBELLISHMENTS

158130 - Iridescent Rhinestones Basic Jewels

BUNDLES

162755 - Hot Air Balloon Bundle (English)

INSTRUCTIONS

Card size: Mini slim



TECHNIQUES:

- Other

PAGE #: 34

CRAFTER LEVEL: Avid

CARD BASE SIZE: Narrow Notecard

PAPER

122924 - Pool Party 8-1/2" X 11" Cardstock, 141416 - Flirty Flamingo 8-1/2" X 11" Cardstock, 146985 - Petal Pink 8-1/2" X 11" Cardstock, 159276 - Basic White 8-1/2" X 11" Cardstock, 161720 - Lemon Lolly 8-1/2" X 11" Cardstock, 162747 - Lighter Than Air 6" X 6" (15.2 X 15.2 Cm) Designer Series Paper

INK

147052 - Flirty Flamingo Classic Stampin' Pad, 161666 - Lemon Lolly Classic Stampin' Pad

TOOLS

104430 - Stampin' Dimensionals, 152813 - Stampin' Seal, 153611 - Blending Brushes, 161185 - Reach For The Stars Dies, 161285 - Foursquare Decorative Masks

EMBELLISHMENTS

162557 - Adhesive-Backed Hearts & Flowers

BUNDLES

162755 - Hot Air Balloon Bundle (English)

INSTRUCTIONS



TECHNIQUES:

- Blending Brushes
- Other

PAGE #: 35 **CRAFTER LEVEL:** Beginner **CARD BASE SIZE:** Notecard

STAMPS

162915 - Filled With Happiness Photopolymer Stamp Set (English)

PAPER

159232 - Basic White Note Cards & Envelopes, 159276 - Basic White 8-1/2" X 11" Cardstock, 161449 - Bright & Beautiful 6" X 6" (15.2 X 15.2 Cm) Designer Series Paper

INK

132708 - Tuxedo Black Memento Ink Pad

TOOLS

104430 - Stampin' Dimensionals, 152813 - Stampin' Seal, 162234 - Modern Oval Punch

EMBELLISHMENTS

160387 - Pastel Adhesive-Backed Sequins

INSTRUCTIONS



TECHNIQUES:

- Other

PAGE #: 35 **CRAFTER LEVEL:** Casual **CARD BASE SIZE:** Notecard

STAMPS

162915 - Filled With Happiness Photopolymer Stamp Set (English)

PAPER

159276 - Basic White 8-1/2" X 11" Cardstock, 161640 - Delightfully Eclectic 12" X 12" (30.5 X 30.5 Cm) Designer Series Paper, 161718 - Bubble Bath 8-1/2" X 11" Cardstock

INK

132708 - Tuxedo Black Memento Ink Pad, 149014 - Watercolor Pencils Assortment 2, 161700 - Watercolor Pencils Assortment 1

TOOLS

104430 - Stampin' Dimensionals, 162234 - Modern Oval Punch

EMBELLISHMENTS

162758 - Rainbow Adhesive-Backed Dots

INSTRUCTIONS

Asst 1 - Pink, daffodil
Asst 2 - Coastal



TECHNIQUES:

- Watercolor Pencils Coloring

PAGE #: 35

CRAFTER LEVEL: Avid

CARD BASE SIZE:

STAMPS

162915 - Filled With Happiness Photopolymer Stamp Set (English)

PAPER

101856 - Vellum 8-1/2" X 11" Cardstock, 159229 - Basic White 8-1/2" X 11" Thick Cardstock, 159788 - Envelope Treat Boxes

INK

102283 - Versamark Pad, 147094 - Daffodil Delight Classic Stampin' Pad, 147097 - Coastal Cabana Classic Stampin' Pad, 147107 - Pool Party Classic Stampin' Pad, 161666 - Lemon Lolly Classic Stampin' Pad

TOOLS

104430 - Stampin' Dimensionals, 151298 - Water Painters, 152813 - Stampin' Seal, 153611 - Blending Brushes, 154031 - Tear & Tape Adhesive, 162234 - Modern Oval Punch

EMBELLISHMENTS

155554 - Basics Embossing Powders, 162842 - Iridescent Foil Gems

INSTRUCTIONS

For the larger oval, I lightly traced the shape with a pencil then cut it out.



TECHNIQUES:

- Heat Embossing
- Modify base product
- Watercolor • Detailed

PAGE #: 35

CRAFTER LEVEL: Avid

CARD BASE SIZE:

STAMPS

162915 - Filled With Happiness Photopolymer Stamp Set (English)

PAPER

101856 - Vellum 8-1/2" X 11" Cardstock, 159229 - Basic White 8-1/2" X 11" Thick Cardstock, 159788 - Envelope Treat Boxes

INK

102283 - Versamark Pad, 147052 - Flirty Flamingo Classic Stampin' Pad, 147107 - Pool Party Classic Stampin' Pad, 161664 - Bubble Bath Classic Stampin' Pad

TOOLS

104430 - Stampin' Dimensionals, 152813 - Stampin' Seal, 153611 - Blending Brushes, 154031 - Tear & Tape Adhesive, 162234 - Modern Oval Punch

EMBELLISHMENTS

155554 - Basics Embossing Powders, 162842 - Iridescent Foil Gems

INSTRUCTIONS

For the larger oval, I lightly traced the shape with a pencil then cut it out.



TECHNIQUES:

- Heat Embossing
- Modify base product
- Watercolor • Detailed

PAGE #: 36

CRAFTER LEVEL: Avid

CARD BASE SIZE: Standard A2

STAMPS

162919 - Love This Moment Photopolymer Stamp Set (English)

PAPER

122924 - Pool Party 8-1/2" X 11" Cardstock, 146981 - Shaded Spruce 8-1/2" X 11" Cardstock, 159229 - Basic White 8-1/2" X 11" Thick Cardstock, 162828 - Just Kiddin' 12" X 12" (30.5 X 30.5 Cm) Designer Series Paper

INK

102283 - Versamark Pad, 147051 - Melon Mambo Classic Stampin' Pad, 147107 - Pool Party Classic Stampin' Pad, 153112 - Melon Mambo Stampin' Blends Combo Pack, 154883 - Daffodil Delight Stampin' Blends Combo Pack, 154894 - Pool Party Stampin' Blends Combo Pack, 154903 - Shaded Spruce Stampin' Blends Combo Pack, 161682 - Lemon Lime Twist Stampin' Blends Combo Pack

TOOLS

103579 - Paper Snips Scissors, 104430 - Stampin' Dimensionals, 152813 - Stampin' Seal, 159183 - Stylish Shapes Dies

EMBELLISHMENTS

155554 - Basics Embossing Powders, 158130 - Iridescent Rhinestones Basic Jewels, 159195 - 2022-2024 In Color Baker's Twine Pack

INSTRUCTIONS



TECHNIQUES:

- Create your own DSP
- Fussy cutting
- Stampin' Blends Coloring

PAGE #: 36

CRAFTER LEVEL: Avid

CARD BASE SIZE:

STAMPS

162919 - Love This Moment Photopolymer Stamp Set (English)

PAPER

101650 - Very Vanilla 8-1/2" X 11" Cardstock, 159229 - Basic White 8-1/2" X 11" Thick Cardstock, 159276 - Basic White 8-1/2" X 11" Cardstock

INK

147051 - Melon Mambo Classic Stampin' Pad, 147087 - Crushed Curry Classic Stampin' Pad, 147107 - Pool Party Classic Stampin' Pad, 147143 - Berry Burst Classic Stampin' Pad, 147145 - Lemon Lime Twist Classic Stampin' Pad, 153112 - Melon Mambo Stampin' Blends Combo Pack, 154883 - Daffodil Delight Stampin' Blends Combo Pack, 154894 - Pool Party Stampin' Blends Combo Pack, 161681 - Berry Burst Stampin' Blends Combo Pack, 161682 - Lemon Lime Twist Stampin' Blends Combo Pack, 161699 - Regals Stampin' Write Markers

TOOLS

103579 - Paper Snips Scissors, 104430 - Stampin' Dimensionals, 144108 - Mini Stampin' Dimensionals, 152813 - Stampin' Seal

EMBELLISHMENTS

162709 - Adhesive-Backed Lightning & Stars

INSTRUCTIONS

Marker used: Curry



TECHNIQUES:

- Create your own DSP
- Distressing
- Modifying Embellishments
- Splattering
- Stampin' Blends Coloring

PAGE #: 37

CRAFTER LEVEL: Avid

CARD BASE SIZE:

PAPER

102210 - 6" X 8" (15.2 X 20.3 Cm) Cellophane Bags, 131199 - Crushed Curry 8-1/2" X 11" Cardstock, 144245 - Lemon Lime Twist 8-1/2" X 11" Cardstock, 159229 - Basic White 8-1/2" X 11" Thick Cardstock, 161644 - Subtles 6" X 6" (15.2 X 15.2 Cm) Designer Series Paper, 161717 - Pecan Pie 8-1/2" X 11" Cardstock

INK

101406 - Jet Black Stāzon Pad, 147088 - Shaded Spruce Classic Stampin' Pad, 149014 - Watercolor Pencils Assortment 2, 161665 - Pecan Pie Classic Stampin' Pad, 161700 - Watercolor Pencils Assortment 1

TOOLS

104430 - Stampin' Dimensionals, 110755 - Multipurpose Liquid Glue, 151298 - Water Painters, 154031 - Tear & Tape Adhesive, 160518 - Small Blending Brushes, 160693 - Happy Labels Pick A Punch

EMBELLISHMENTS

161318 - Ribbon Duo Combo Pack

BUNDLES

162771 - Ice Cream Swirl Bundle (English)

INSTRUCTIONS

Watercolor 1: mambo, garden, daffodil

Watercolor 2: coastal

Trim scallops from wrapper for a different look



TECHNIQUES:

- Other

PAGE #: 37

CRAFTER LEVEL: Avid

CARD BASE SIZE: Notecard

PAPER

122924 - Pool Party 8-1/2" X 11" Cardstock, 144245 - Lemon Lime Twist 8-1/2" X 11" Cardstock, 159229 - Basic White 8-1/2" X 11" Thick Cardstock, 159232 - Basic White Note Cards & Envelopes, 162828 - Just Kiddin' 12" X 12" (30.5 X 30.5 Cm) Designer Series Paper

INK

101406 - Jet Black Stāzon Pad, 102283 - Versamark Pad, 147107 - Pool Party Classic Stampin' Pad, 147116 - Crumb Cake Classic Stampin' Pad, 147143 - Berry Burst Classic Stampin' Pad, 147145 - Lemon Lime Twist Classic Stampin' Pad, 149014 - Watercolor Pencils Assortment 2, 161700 - Watercolor Pencils Assortment 1

TOOLS

103579 - Paper Snips Scissors, 104430 - Stampin' Dimensionals, 110755 - Multipurpose Liquid Glue, 151298 - Water Painters, 153611 - Blending Brushes

EMBELLISHMENTS

162557 - Adhesive-Backed Hearts & Flowers

BUNDLES

162771 - Ice Cream Swirl Bundle (English)

INSTRUCTIONS

Watercolor 1: espresso, mambo, garden, daffodil

Watercolor 2: coastal, curry

Use swirl die to create background texture.



TECHNIQUES:

- Blending Brushes

PAGE #: 37

CRAFTER LEVEL: Casual

CARD BASE SIZE:

PAPER

101650 - Very Vanilla 8-1/2" X 11" Cardstock, 115320 - Melon Mambo 8-1/2" X 11" Cardstock, 131199 - Crushed Curry 8-1/2" X 11" Cardstock, 161717 - Pecan Pie 8-1/2" X 11" Cardstock

INK

147051 - Melon Mambo Classic Stampin' Pad, 147087 - Crushed Curry Classic Stampin' Pad, 147116 - Crumb Cake Classic Stampin' Pad, 161665 - Pecan Pie Classic Stampin' Pad

TOOLS

152813 - Stampin' Seal

EMBELLISHMENTS

162824 - Champagne Iridescent Dots

BUNDLES

162771 - Ice Cream Swirl Bundle (English)

INSTRUCTIONS



TECHNIQUES:

- Stamping off

PAGE #: 39

CRAFTER LEVEL: Avid

CARD BASE SIZE: Mini Slim

PAPER

100702 - Old Olive 8-1/2" X 11" Cardstock, 132622 - Gold Foil Sheets, 159276 - Basic White 8-1/2" X 11" Cardstock, 161718 - Bubble Bath 8-1/2" X 11" Cardstock

INK

147090 - Old Olive Classic Stampin' Pad, 147143 - Berry Burst Classic Stampin' Pad, 154892 - Old Olive Stampin' Blends Combo Pack, 161664 - Bubble Bath Classic Stampin' Pad, 161696 - Brights Stampin' Write Markers

TOOLS

104430 - Stampin' Dimensionals, 110755 - Multipurpose Liquid Glue, 153611 - Blending Brushes, 162673 - Enduring Beauty Decorative Masks

EMBELLISHMENTS

155475 - Baker's Twine Essentials Pack

BUNDLES

162674 - Enduring Beauty Bundle (English)

INSTRUCTIONS

I used berry burst stampin' write to splatter background.



TECHNIQUES:

- Splattering
- Stencils – Blending Brushes

PAGE #: 39

CRAFTER LEVEL: Avid

CARD BASE SIZE: Square 4"

PAPER

141416 - Flirty Flamingo 8-1/2" X 11" Cardstock, 150880 - Pretty Peacock 8-1/2" X 11" Cardstock, 159276 - Basic White 8-1/2" X 11" Cardstock

INK

147052 - Flirty Flamingo Classic Stampin' Pad, 147277 - Uninked Stampin' Pad & Whisper White Refill

TOOLS

104430 - Stampin' Dimensionals, 110755 - Multipurpose Liquid Glue

EMBELLISHMENTS

155554 - Basics Embossing Powders, 161171 - Lost Lagoon ¼" (6.4 Mm) Bordered Ribbon, 161625 - Iridescent Shaker Circles

BUNDLES

162674 - Enduring Beauty Bundle (English)

INSTRUCTIONS



TECHNIQUES:

- Heat Embossing

PAGE #: 39

CRAFTER LEVEL: Avid

CARD BASE SIZE: Standard A2

PAPER

133676 - Mossy Meadow 8-1/2" X 11" Cardstock, 133679 - Lost Lagoon 8-1/2" X 11" Cardstock, 159276 - Basic White 8-1/2" X 11" Cardstock

INK

132708 - Tuxedo Black Memento Ink Pad, 147052 - Flirty Flamingo Classic Stampin' Pad, 147087 - Crushed Curry Classic Stampin' Pad, 147111 - Mossy Meadow Classic Stampin' Pad, 150083 - Pretty Peacock Classic Stampin' Pad, 154884 - Flirty Flamingo Stampin' Blends Combo Pack

TOOLS

104430 - Stampin' Dimensionals, 110755 - Multipurpose Liquid Glue, 153611 - Blending Brushes, 160693 - Happy Labels Pick A Punch, 161285 - Foursquare Decorative Masks, 162673 - Enduring Beauty Decorative Masks

EMBELLISHMENTS

158130 - Iridescent Rhinestones Basic Jewels

BUNDLES

162674 - Enduring Beauty Bundle (English)

INSTRUCTIONS



TECHNIQUES:

- Stencils – Blending Brushes

PAGE #: 40

CRAFTER LEVEL: Avid

CARD BASE SIZE: Notecard

PAPER

100702 - Old Olive 8-1/2" X 11" Cardstock, 122925 - Calypso Coral 8-1/2" X 11" Cardstock, 144245 - Lemon Lime Twist 8-1/2" X 11" Cardstock, 161722 - Pebbled Path 8-1/2" X 11" Cardstock, 162616 - Nature's Sweetness 12" X 12" (30.5 X 30.5 Cm) Specialty Designer Series Paper

INK

147277 - Uninked Stampin' Pad & Whisper White Refill, 161648 - Pebbled Path Classic Stampin' Pad

TOOLS

103683 - Mini Glue Dots, 104430 - Stampin' Dimensionals

EMBELLISHMENTS

155554 - Basics Embossing Powders, 162643 - Adhesive-Backed Cork Rounds, 162644 - Gold 1/8" (3.2 Mm) Faux Leather Trim

BUNDLES

162627 - Lovely & Sweet Bundle (English), 162640 - Notes Of Nature Bundle (English)

INSTRUCTIONS



TECHNIQUES:

- Heat Embossing

PAGE #: 40

CRAFTER LEVEL: Avid

CARD BASE SIZE: Standard A2

PAPER

100702 - Old Olive 8-1/2" X 11" Cardstock, 159276 - Basic White 8-1/2" X 11" Cardstock, 161717 - Pecan Pie 8-1/2" X 11" Cardstock, 162616 - Nature's Sweetness 12" X 12" (30.5 X 30.5 Cm) Specialty Designer Series Paper

INK

132708 - Tuxedo Black Memento Ink Pad, 147101 - Calypso Coral Classic Stampin' Pad, 154881 - Calypso Coral Stampin' Blends Combo Pack, 154892 - Old Olive Stampin' Blends Combo Pack, 161648 - Pebbled Path Classic Stampin' Pad, 161665 - Pecan Pie Classic Stampin' Pad, 161674 - Pecan Pie Stampin' Blends Combo Pack, 161682 - Lemon Lime Twist Stampin' Blends Combo Pack

TOOLS

103683 - Mini Glue Dots, 104430 - Stampin' Dimensionals, 153611 - Blending Brushes, 154031 - Tear & Tape Adhesive, 154336 - Give It A Whirl Dies

EMBELLISHMENTS

162644 - Gold 1/8" (3.2 Mm) Faux Leather Trim

BUNDLES

162627 - Lovely & Sweet Bundle (English), 162640 - Notes Of Nature Bundle (English)

INSTRUCTIONS



TECHNIQUES:

- Blending Brushes
- Stampin' Blends Coloring

PAGE #: 40 **CRAFTER LEVEL:** Casual **CARD BASE SIZE:** Standard A4

STAMPS

162630 - Notes Of Nature Cling Stamp Set (English)

PAPER

144245 - Lemon Lime Twist 8-1/2" X 11" Cardstock, 159276 - Basic White 8-1/2" X 11" Cardstock, 161722 - Pebbled Path 8-1/2" X 11" Cardstock, 162616 - Nature's Sweetness 12" X 12" (30.5 X 30.5 Cm) Specialty Designer Series Paper

INK

161665 - Pecan Pie Classic Stampin' Pad

TOOLS

103683 - Mini Glue Dots, 104430 - Stampin' Dimensionals, 152813 - Stampin' Seal, 162626 - Lovely & Sweet Dies

EMBELLISHMENTS

162643 - Adhesive-Backed Cork Rounds

INSTRUCTIONS



TECHNIQUES:

- Other

PAGE #: 40 **CRAFTER LEVEL:** Avid **CARD BASE SIZE:** Square 4"

PAPER

100702 - Old Olive 8-1/2" X 11" Cardstock, 144245 - Lemon Lime Twist 8-1/2" X 11" Cardstock, 149612 - Fluid 100 Watercolor Paper, 159276 - Basic White 8-1/2" X 11" Cardstock, 161722 - Pebbled Path 8-1/2" X 11" Cardstock, 162616 - Nature's Sweetness 12" X 12" (30.5 X 30.5 Cm) Specialty Designer Series Paper

INK

101406 - Jet Black Stāzon Pad, 147090 - Old Olive Classic Stampin' Pad, 147101 - Calypso Coral Classic Stampin' Pad, 147145 - Lemon Lime Twist Classic Stampin' Pad, 161665 - Pecan Pie Classic Stampin' Pad

TOOLS

103683 - Mini Glue Dots, 104430 - Stampin' Dimensionals, 151298 - Water Painters, 152813 - Stampin' Seal

BUNDLES

162627 - Lovely & Sweet Bundle (English), 162640 - Notes Of Nature Bundle (English)

INSTRUCTIONS



TECHNIQUES:

- Watercolor • Detailed

PAGE #: 40

CRAFTER LEVEL: Avid

CARD BASE SIZE:

PAPER

101856 - Vellum 8-1/2" X 11" Cardstock, 161722 - Pebbled Path 8-1/2" X 11" Cardstock, 162616 - Nature's Sweetness 12" X 12" (30.5 X 30.5 Cm) Specialty Designer Series Paper

INK

147277 - Uninked Stampin' Pad & Whisper White Refill, 161648 - Pebbled Path Classic Stampin' Pad, 161665 - Pecan Pie Classic Stampin' Pad

TOOLS

103683 - Mini Glue Dots, 104430 - Stampin' Dimensionals, 152813 - Stampin' Seal, 154031 - Tear & Tape Adhesive, 162626 - Lovely & Sweet Dies

EMBELLISHMENTS

155554 - Basics Embossing Powders, 158136 - Brushed Brass Butterflies, 162644 - Gold 1/8" (3.2 Mm) Faux Leather Trim

BUNDLES

162640 - Notes Of Nature Bundle (English)

INSTRUCTIONS

I die cut the chocolate from the DSP and fussy cut the words on the top. I used the snips to make cuts on the pecan DSP piece. Heat set after stamping on vellum.



TECHNIQUES:

- Fussy cutting
- Heat Embossing

PAGE #: 42

CRAFTER LEVEL: Casual

CARD BASE SIZE: Standard A2

PAPER

102584 - Garden Green 8-1/2" X 11" Cardstock, 159276 - Basic White 8-1/2" X 11" Cardstock, 162616 - Nature's Sweetness 12" X 12" (30.5 X 30.5 Cm) Specialty Designer Series Paper

INK

132708 - Tuxedo Black Memento Ink Pad, 149014 - Watercolor Pencils Assortment 2, 161648 - Pebbled Path Classic Stampin' Pad

TOOLS

104430 - Stampin' Dimensionals, 152813 - Stampin' Seal, 153611 - Blending Brushes, 154031 - Tear & Tape Adhesive

EMBELLISHMENTS

162644 - Gold 1/8" (3.2 Mm) Faux Leather Trim

BUNDLES

162627 - Lovely & Sweet Bundle (English)

INSTRUCTIONS

Watercolor pencils used: garden green and crushed curry.



TECHNIQUES:

- Blending Brushes
- Watercolor Pencils Coloring

PAGE #: 42

CRAFTER LEVEL: Avid

CARD BASE SIZE: Standard A4

PAPER

101650 - Very Vanilla 8-1/2" X 11" Cardstock, 101856 - Vellum 8-1/2" X 11" Cardstock, 122924 - Pool Party 8-1/2" X 11" Cardstock, 161717 - Pecan Pie 8-1/2" X 11" Cardstock, 162616 - Nature's Sweetness 12" X 12" (30.5 X 30.5 Cm) Specialty Designer Series Paper

INK

147107 - Pool Party Classic Stampin' Pad, 161665 - Pecan Pie Classic Stampin' Pad

TOOLS

103683 - Mini Glue Dots, 104430 - Stampin' Dimensionals, 133773 - Sponge Daubers, 152813 - Stampin' Seal

EMBELLISHMENTS

104199 - Linen Thread, 162643 - Adhesive-Backed Cork Rounds

BUNDLES

162627 - Lovely & Sweet Bundle (English)

INSTRUCTIONS

I carefully sponged the ink onto the foiled DSP with sponge daubers.



TECHNIQUES:

- Sponging
- Other

PAGE #: 42

CRAFTER LEVEL: Casual

CARD BASE SIZE: Notecard

PAPER

102584 - Garden Green 8-1/2" X 11" Cardstock, 159276 - Basic White 8-1/2" X 11" Cardstock, 162616 - Nature's Sweetness 12" X 12" (30.5 X 30.5 Cm) Specialty Designer Series Paper

INK

147089 - Garden Green Classic Stampin' Pad, 147107 - Pool Party Classic Stampin' Pad, 161648 - Pebbled Path Classic Stampin' Pad, 161665 - Pecan Pie Classic Stampin' Pad

TOOLS

103579 - Paper Snips Scissors, 104430 - Stampin' Dimensionals, 110755 - Multipurpose Liquid Glue, 152813 - Stampin' Seal

EMBELLISHMENTS

162643 - Adhesive-Backed Cork Rounds

BUNDLES

162640 - Notes Of Nature Bundle (English)

INSTRUCTIONS

I roughed up the edge of the cardstock with my snips.



TECHNIQUES:

- Distressing

PAGE #: 43

CRAFTER LEVEL: Avid

CARD BASE SIZE: Standard A4

PAPER

101650 - Very Vanilla 8-1/2" X 11" Cardstock, 149612 - Fluid 100 Watercolor Paper, 161717 - Pecan Pie 8-1/2" X 11" Cardstock, 162616 - Nature's Sweetness 12" X 12" (30.5 X 30.5 Cm) Specialty Designer Series Paper

INK

101406 - Jet Black Stāzon Pad, 147089 - Garden Green Classic Stampin' Pad, 161648 - Pebbled Path Classic Stampin' Pad, 161665 - Pecan Pie Classic Stampin' Pad

TOOLS

103683 - Mini Glue Dots, 104430 - Stampin' Dimensionals, 151298 - Water Painters, 152813 - Stampin' Seal, 159183 - Stylish Shapes Dies

BUNDLES

162640 - Notes Of Nature Bundle (English)

INSTRUCTIONS



TECHNIQUES:

- Stamping off
- Watercolor • Detailed

PAGE #: 43

CRAFTER LEVEL: Avid

CARD BASE SIZE: Standard A2

PAPER

161717 - Pecan Pie 8-1/2" X 11" Cardstock, 161722 - Pebbled Path 8-1/2" X 11" Cardstock, 162616 - Nature's Sweetness 12" X 12" (30.5 X 30.5 Cm) Specialty Designer Series Paper

INK

147277 - Uninked Stampin' Pad & Whisper White Refill, 161648 - Pebbled Path Classic Stampin' Pad

TOOLS

103683 - Mini Glue Dots, 104430 - Stampin' Dimensionals, 110755 - Multipurpose Liquid Glue, 154031 - Tear & Tape Adhesive

EMBELLISHMENTS

155554 - Basics Embossing Powders, 162644 - Gold 1/8" (3.2 Mm) Faux Leather Trim

BUNDLES

162640 - Notes Of Nature Bundle (English)

INSTRUCTIONS



TECHNIQUES:

- Heat Embossing

PAGE #: 44 **CRAFTER LEVEL:** Casual **CARD BASE SIZE:** Standard A2

PAPER

162930 - Sweet Thoughts Memories & More Card Pack, 162931 - Sweet Thoughts Memories & More Cards & Envelopes

TOOLS

104430 - Stampin' Dimensionals

EMBELLISHMENTS

161627 - Neutrals Adhesive-Backed Sequins

INSTRUCTIONS

Cut the film sticker in half to make longer behind butterfly.



TECHNIQUES:

- Other

PAGE #: 44 **CRAFTER LEVEL:** Avid **CARD BASE SIZE:**

PAPER

162930 - Sweet Thoughts Memories & More Card Pack

INK

161699 - Regals Stampin' Write Markers

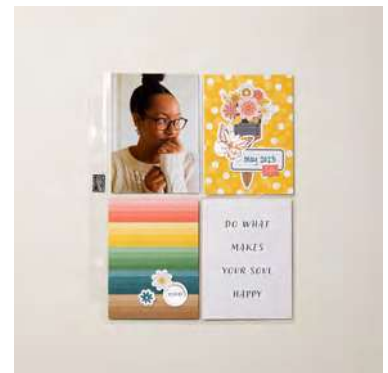
EMBELLISHMENTS

155475 - Baker's Twine Essentials Pack

STORAGE

144205 - Variety Pack 6" X 8" (15.2 X 20.3 Cm) Photo Pocket Pages, 163883 - Basic Black 6" X 8" (15.2 X 20.3 Cm) Album

INSTRUCTIONS



TECHNIQUES:

- Other

PAGE #: 44 **CRAFTER LEVEL:** Avid **CARD BASE SIZE:**

PAPER

162930 - Sweet Thoughts Memories & More Card Pack, 162931 - Sweet Thoughts Memories & More Cards & Envelopes

TOOLS

104430 - Stampin' Dimensionals, 149699 - Stampin' Seal+

EMBELLISHMENTS

156485 - Black & White 1/4" (6.4 Mm) Gingham Ribbon

INSTRUCTIONS

Score on all sides of card base 3/4".
Fold line, score 3/8" on each side of line.
Fold score lines, cut to form a box with tabs that fold into each other.



TECHNIQUES:

- Fussy cutting
- Modify base product

PAGE #: 44

CRAFTER LEVEL: Avid

CARD BASE SIZE:

PAPER

146985 - Petal Pink 8-1/2" X 11" Cardstock, 161717 - Pecan Pie 8-1/2" X 11" Cardstock, 162930 - Sweet Thoughts Memories & More Card Pack

INK

162481 - Basic Black Stampin' Write Marker

TOOLS

104430 - Stampin' Dimensionals, 152813 - Stampin' Seal, 161592 - Patchwork Pieces Dies, 162864 - Everyday Details Dies

EMBELLISHMENTS

104199 - Linen Thread, 162643 - Adhesive-Backed Cork Rounds



INSTRUCTIONS

Thread linen twine in the dots of circle from everyday detail dies.

TECHNIQUES:

- Other

PAGE #: 45

CRAFTER LEVEL: Avid

CARD BASE SIZE: Standard A4

STAMPS

162899 - Let'S Chat Photopolymer Stamp Set (English)

PAPER

102584 - Garden Green 8-1/2" X 11" Cardstock, 159276 - Basic White 8-1/2" X 11" Cardstock, 162930 - Sweet Thoughts Memories & More Card Pack

INK

147087 - Crushed Curry Classic Stampin' Pad, 161665 - Pecan Pie Classic Stampin' Pad, 161678 - Lost Lagoon Classic Stampin' Pad

TOOLS

104430 - Stampin' Dimensionals, 152813 - Stampin' Seal, 161597 - Nested Essentials Dies



INSTRUCTIONS

TECHNIQUES:

- Fussy cutting

PAGE #: 45 **CRAFTER LEVEL:** Casual **CARD BASE SIZE:** Standard A2

STAMPS

162899 - Let'S Chat Photopolymer Stamp Set (English)

PAPER

146985 - Petal Pink 8-1/2" X 11" Cardstock, 159276 - Basic White 8-1/2" X 11" Cardstock

INK

147101 - Calypso Coral Classic Stampin' Pad, 150083 - Pretty Peacock Classic Stampin' Pad, 161678 - Lost Lagoon Classic Stampin' Pad

TOOLS

104430 - Stampin' Dimensionals, 152813 - Stampin' Seal, 161599 - Geometric Patterns Embossing Folders, 162626 - Lovely & Sweet Dies



TECHNIQUES:

- Other

INSTRUCTIONS

PAGE #: 46 **CRAFTER LEVEL:** Avid **CARD BASE SIZE:**

STAMPS

162563 - Adoring Hearts Photopolymer Stamp Set (English), 162729 - Doggone Friendly Cling Stamp Set (English)

PAPER

102210 - 6" X 8" (15.2 X 20.3 Cm) Cellophane Bags, 159276 - Basic White 8-1/2" X 11" Cardstock, 161717 - Pecan Pie 8-1/2" X 11" Cardstock, 161723 - Moody Mauve 8-1/2" X 11" Cardstock

INK

132708 - Tuxedo Black Memento Ink Pad, 154880 - Cherry Cobbler Stampin' Blends Combo Pack, 161660 - Moody Mauve Stampin' Blends Combo Pack, 161662 - Copper Clay Stampin' Blends Combo Pack, 161674 - Pecan Pie Stampin' Blends Combo Pack, 161680 - Lost Lagoon Stampin' Blends Combo Pack

TOOLS

104430 - Stampin' Dimensionals, 110755 - Multipurpose Liquid Glue, 159183 - Stylish Shapes Dies, 162934 - Mini Alphabet Dies



TECHNIQUES:

- Fussy cutting
- Stampin' Blends Coloring

INSTRUCTIONS

Finished treat bag: 3 1/2 x 4
Cardstock size: 7 1/2 x 4
Scored at 3 1/2 and 4

PAGE #: 46

CRAFTER LEVEL: Avid

CARD BASE SIZE: Standard A2

STAMPS

161193 - Gorgeously Made Cling Stamp Set (English), 162925 - Planted Paradise Photopolymer Stamp Set (English)

PAPER

120953 - Crumb Cake 8-1/2" X 11" Cardstock, 133679 - Lost Lagoon 8-1/2" X 11" Cardstock, 159276 - Basic White 8-1/2" X 11" Cardstock

INK

132708 - Tuxedo Black Memento Ink Pad, 147083 - Cherry Cobbler Classic Stampin' Pad, 147113 - Smoky Slate Classic Stampin' Pad, 147116 - Crumb Cake Classic Stampin' Pad, 161647 - Copper Clay Classic Stampin' Pad, 161649 - Moody Mauve Classic Stampin' Pad, 161665 - Pecan Pie Classic Stampin' Pad, 161678 - Lost Lagoon Classic Stampin' Pad

TOOLS

102845 - Blender Pens, 104430 - Stampin' Dimensionals, 110755 - Multipurpose Liquid Glue, 159183 - Stylish Shapes Dies

EMBELLISHMENTS

161300 - Adhesive-Backed Solid Gems

INSTRUCTIONS



TECHNIQUES:

- Blender Pen Coloring
- Other

PAGE #: 46

CRAFTER LEVEL: Avid

CARD BASE SIZE: Standard A2

STAMPS

162648 - Wild Ferns Cling Stamp Set (English), 162903 - Botanical Beauty Cling Stamp Set (English)

PAPER

133676 - Mossy Meadow 8-1/2" X 11" Cardstock, 133679 - Lost Lagoon 8-1/2" X 11" Cardstock, 159276 - Basic White 8-1/2" X 11" Cardstock

INK

102283 - Versamark Pad, 147111 - Mossy Meadow Classic Stampin' Pad, 161649 - Moody Mauve Classic Stampin' Pad, 161678 - Lost Lagoon Classic Stampin' Pad

TOOLS

104430 - Stampin' Dimensionals, 110755 - Multipurpose Liquid Glue, 162821 - Thoughtful Expressions Dies, 162936 - Stampin' Brayer, 162946 - Softly Sophisticated 3D Embossing Folder

EMBELLISHMENTS

155554 - Basics Embossing Powders, 160429 - Iridescent Pastel Gems, 161630 - Moody Mauve 3/8" (1 Cm) Textured Ribbon

INSTRUCTIONS



TECHNIQUES:

- Create your own DSP
- Heat Embossing

PAGE #: 46

CRAFTER LEVEL: Avid

CARD BASE SIZE: Notecard

STAMPS

154542 - Artistically Inked Cling Stamp Set (English), 162903 - Botanical Beauty Cling Stamp Set (English)

PAPER

159276 - Basic White 8-1/2" X 11" Cardstock, 161723 - Moody Mauve 8-1/2" X 11" Cardstock, 162573 - Forever Love 12" X 12" (30.5 X 30.5 Cm) Specialty Designer Series Paper

INK

102283 - Versamark Pad, 147111 - Mossy Meadow Classic Stampin' Pad, 161651 - Wild Wheat Classic Stampin' Pad

TOOLS

104430 - Stampin' Dimensionals, 110755 - Multipurpose Liquid Glue

EMBELLISHMENTS

155554 - Basics Embossing Powders, 161637 - 2023–2025 In Color Jute Trim

INSTRUCTIONS



TECHNIQUES:

- Create your own DSP
- Fussy cutting
- Heat Embossing

PAGE #: 47

CRAFTER LEVEL: Avid

CARD BASE SIZE: Standard A2

STAMPS

162925 - Planted Paradise Photopolymer Stamp Set (English)

PAPER

120953 - Crumb Cake 8-1/2" X 11" Cardstock, 159276 - Basic White 8-1/2" X 11" Cardstock, 161641 - Neutrals 6" X 6" (15.2 X 15.2 Cm) Designer Series Paper

INK

102283 - Versamark Pad, 147111 - Mossy Meadow Classic Stampin' Pad, 161649 - Moody Mauve Classic Stampin' Pad, 161651 - Wild Wheat Classic Stampin' Pad, 161665 - Pecan Pie Classic Stampin' Pad

TOOLS

104430 - Stampin' Dimensionals, 110755 - Multipurpose Liquid Glue

EMBELLISHMENTS

104199 - Linen Thread, 155554 - Basics Embossing Powders

INSTRUCTIONS



TECHNIQUES:

- Fussy cutting
- Stamping off

PAGE #: 47 **CRAFTER LEVEL:** Avid **CARD BASE SIZE:** Standard A2

STAMPS

162925 - Planted Paradise Photopolymer Stamp Set (English)

PAPER

120953 - Crumb Cake 8-1/2" X 11" Cardstock, 159276 - Basic White 8-1/2" X 11" Cardstock

INK

132708 - Tuxedo Black Memento Ink Pad, 147085 - Cajun Craze Classic Stampin' Pad, 147111 - Mossy Meadow Classic Stampin' Pad, 147116 - Crumb Cake Classic Stampin' Pad

TOOLS

104430 - Stampin' Dimensionals, 110755 - Multipurpose Liquid Glue, 153611 - Blending Brushes, 162934 - Mini Alphabet Dies

EMBELLISHMENTS

162842 - Iridescent Foil Gems

INSTRUCTIONS

Card size: 3 1/2 x 6



TECHNIQUES:

- Blending Brushes
- Create your own DSP
- Paper Piecing
- Stamping off

PAGE #: 48 **CRAFTER LEVEL:** Avid **CARD BASE SIZE:** Slim

PAPER

100702 - Old Olive 8-1/2" X 11" Cardstock, 119683 - Daffodil Delight 8-1/2" X 11" Cardstock, 122924 - Pool Party 8-1/2" X 11" Cardstock, 161721 - Copper Clay 8-1/2" X 11" Cardstock, 162828 - Just Kiddin' 12" X 12" (30.5 X 30.5 Cm) Designer Series Paper

INK

102283 - Versamark Pad, 147087 - Crushed Curry Classic Stampin' Pad, 147107 - Pool Party Classic Stampin' Pad

TOOLS

103579 - Paper Snips Scissors, 104430 - Stampin' Dimensionals, 152813 - Stampin' Seal

EMBELLISHMENTS

155554 - Basics Embossing Powders

BUNDLES

162839 - Kiddin' Around Bundle (English)

INSTRUCTIONS



TECHNIQUES:

- Distressing
- Heat Embossing

PAGE #: 48

CRAFTER LEVEL: Avid

CARD BASE SIZE: Standard A4

PAPER

122924 - Pool Party 8-1/2" X 11" Cardstock, 144243 - Berry Burst 8-1/2" X 11" Cardstock, 144245 - Lemon Lime Twist 8-1/2" X 11" Cardstock, 146983 - Gray Granite 8-1/2" X 11" Cardstock, 155613 - Fresh Freesia 8-1/2" X 11" Cardstock, 159229 - Basic White 8-1/2" X 11" Thick Cardstock, 159276 - Basic White 8-1/2" X 11" Cardstock, 162828 - Just Kiddin' 12" X 12" (30.5 X 30.5 Cm) Designer Series Paper

INK

132708 - Tuxedo Black Memento Ink Pad, 154881 - Calypso Coral Stampin' Blends Combo Pack, 154883 - Daffodil Delight Stampin' Blends Combo Pack, 154884 - Flirty Flamingo Stampin' Blends Combo Pack, 154897 - Pumpkin Pie Stampin' Blends Combo Pack, 155518 - Fresh Freesia Stampin' Blends Combo Pack, 159463 - Stampin' Blends Medium Light Combo Pack, 161658 - Pebbled Path Stampin' Blends Combo Pack, 161672 - Azure Afternoon Stampin' Blends Combo Pack

TOOLS

103579 - Paper Snips Scissors, 103683 - Mini Glue Dots, 104430 - Stampin' Dimensionals, 110755 - Multipurpose Liquid Glue, 152813 - Stampin' Seal, 159183 - Stylish Shapes Dies

EMBELLISHMENTS

162842 - Iridescent Foil Gems

BUNDLES

162839 - Kiddin' Around Bundle (English)

INSTRUCTIONS



TECHNIQUES:

- Fussy cutting
- Stampin' Blends Coloring

PAGE #: 48

CRAFTER LEVEL: Avid

CARD BASE SIZE: Square 4"

PAPER

122924 - Pool Party 8-1/2" X 11" Cardstock, 159229 - Basic White 8-1/2" X 11" Thick Cardstock, 159276 - Basic White 8-1/2" X 11" Cardstock, 162828 - Just Kiddin' 12" X 12" (30.5 X 30.5 Cm) Designer Series Paper

INK

132708 - Tuxedo Black Memento Ink Pad, 147107 - Pool Party Classic Stampin' Pad, 147143 - Berry Burst Classic Stampin' Pad, 153112 - Melon Mambo Stampin' Blends Combo Pack, 154882 - Crumb Cake Stampin' Blends Combo Pack, 154883 - Daffodil Delight Stampin' Blends Combo Pack, 154884 - Flirty Flamingo Stampin' Blends Combo Pack, 154891 - Night Of Navy Stampin' Blends Combo Pack, 154894 - Pool Party Stampin' Blends Combo Pack, 154897 - Pumpkin Pie Stampin' Blends Combo Pack, 154904 - Smoky Slate Stampin' Blends Combo Pack, 158152 - Stampin' Blends Deep Combo Pack, 159461 - Stampin' Blends Medium Deep Combo, 159463 - Stampin' Blends Medium Light Combo Pack, 159465 - Stampin' Blends Light Combo Pack, 161682 - Lemon Lime Twist Stampin' Blends Combo Pack

TOOLS

103579 - Paper Snips Scissors, 104430 - Stampin' Dimensionals, 152813 - Stampin' Seal

EMBELLISHMENTS

162842 - Iridescent Foil Gems

BUNDLES

162839 - Kiddin' Around Bundle (English)

INSTRUCTIONS



TECHNIQUES:

- Other

PAGE #: 48

CRAFTER LEVEL: Avid

CARD BASE SIZE: Standard A4

PAPER

122925 - Calypso Coral 8-1/2" X 11" Cardstock, 144243 - Berry Burst 8-1/2" X 11" Cardstock, 159229 - Basic White 8-1/2" X 11" Thick Cardstock, 162828 - Just Kiddin' 12" X 12" (30.5 X 30.5 Cm) Designer Series Paper

INK

102283 - Versamark Pad

TOOLS

103579 - Paper Snips Scissors, 104430 - Stampin' Dimensionals, 110755 - Multipurpose Liquid Glue, 152813 - Stampin' Seal

EMBELLISHMENTS

155554 - Basics Embossing Powders

BUNDLES

162839 - Kiddin' Around Bundle (English)

INSTRUCTIONS



TECHNIQUES:

- Fussy cutting
- Heat Embossing

PAGE #: 48

CRAFTER LEVEL: Avid

CARD BASE SIZE: Standard A2

PAPER

122925 - Calypso Coral 8-1/2" X 11" Cardstock, 159229 - Basic White 8-1/2" X 11" Thick Cardstock, 162828 - Just Kiddin' 12" X 12" (30.5 X 30.5 Cm) Designer Series Paper

INK

102283 - Versamark Pad

TOOLS

103683 - Mini Glue Dots, 104430 - Stampin' Dimensionals, 152813 - Stampin' Seal, 159183 - Stylish Shapes Dies

EMBELLISHMENTS

104199 - Linen Thread, 155554 - Basics Embossing Powders

BUNDLES

162839 - Kiddin' Around Bundle (English)

INSTRUCTIONS



TECHNIQUES:

- Fussy cutting
- Heat Embossing

PAGE #: 50

CRAFTER LEVEL: Avid

CARD BASE SIZE: Standard A2

PAPER

119683 - Daffodil Delight 8-1/2" X 11" Cardstock, 141416 - Flirty Flamingo 8-1/2" X 11" Cardstock, 144245 - Lemon Lime Twist 8-1/2" X 11" Cardstock, 159276 - Basic White 8-1/2" X 11" Cardstock, 162828 - Just Kiddin' 12" X 12" (30.5 X 30.5 Cm) Designer Series Paper

INK

147051 - Melon Mambo Classic Stampin' Pad

TOOLS

104430 - Stampin' Dimensionals, 110755 - Multipurpose Liquid Glue, 152813 - Stampin' Seal, 162234 - Modern Oval Punch

EMBELLISHMENTS

162842 - Iridescent Foil Gems

BUNDLES

162839 - Kiddin' Around Bundle (English)

INSTRUCTIONS



TECHNIQUES:

- Other

PAGE #: 50

CRAFTER LEVEL: Avid

CARD BASE SIZE:

PAPER

100702 - Old Olive 8-1/2" X 11" Cardstock, 119683 - Daffodil Delight 8-1/2" X 11" Cardstock, 131199 - Crushed Curry 8-1/2" X 11" Cardstock, 159229 - Basic White 8-1/2" X 11" Thick Cardstock, 159276 - Basic White 8-1/2" X 11" Cardstock, 162559 - Square Pillow Boxes

INK

101406 - Jet Black Stāzon Pad, 147086 - Pumpkin Pie Classic Stampin' Pad, 147094 - Daffodil Delight Classic Stampin' Pad, 147101 - Calypso Coral Classic Stampin' Pad, 147107 - Pool Party Classic Stampin' Pad, 147108 - Petal Pink Classic Stampin' Pad, 147118 - Gray Granite Classic Stampin' Pad

TOOLS

104430 - Stampin' Dimensionals, 110755 - Multipurpose Liquid Glue, 151298 - Water Painters, 160518 - Small Blending Brushes

EMBELLISHMENTS

162842 - Iridescent Foil Gems

BUNDLES

162839 - Kiddin' Around Bundle (English)

INSTRUCTIONS



TECHNIQUES:

- Blending Brushes
- Watercolor
- Detailed

PAGE #: 50 **CRAFTER LEVEL:** Casual **CARD BASE SIZE:** Square 4"

PAPER

119683 - Daffodil Delight 8-1/2" X 11" Cardstock, 122925 - Calypso Coral 8-1/2" X 11" Cardstock, 162828 - Just Kiddin' 12" X 12" (30.5 X 30.5 Cm) Designer Series Paper

INK

132708 - Tuxedo Black Memento Ink Pad, 147087 - Crushed Curry Classic Stampin' Pad

TOOLS

104430 - Stampin' Dimensionals, 159183 - Stylish Shapes Dies

EMBELLISHMENTS

155475 - Baker's Twine Essentials Pack, 162842 - Iridescent Foil Gems

BUNDLES

162839 - Kiddin' Around Bundle (English)

INSTRUCTIONS



TECHNIQUES:

- Other

PAGE #: 51 **CRAFTER LEVEL:** Avid **CARD BASE SIZE:** Notecard

PAPER

131297 - Coastal Cabana 8-1/2" X 11" Cardstock, 159276 - Basic White 8-1/2" X 11" Cardstock, 161749 - More Dazzle 6" X 6" (15.2 X 15.2 Cm) Specialty Paper, 162930 - Sweet Thoughts Memories & More Card Pack

INK

101406 - Jet Black Stāzon Pad

TOOLS

104430 - Stampin' Dimensionals, 152813 - Stampin' Seal

EMBELLISHMENTS

162709 - Adhesive-Backed Lightning & Stars

BUNDLES

162794 - Bright Skies Bundle (English)

INSTRUCTIONS

Use large drops as peek through. I ran the paper through the die cut machine once all drops cut out, a few times to smooth bruising.



TECHNIQUES:

- Fussy cutting
- Other

PAGE #: 51 **CRAFTER LEVEL:** Casual **CARD BASE SIZE:** Standard A2

PAPER

144245 - Lemon Lime Twist 8-1/2" X 11" Cardstock, 159276 - Basic White 8-1/2" X 11" Cardstock

INK

101406 - Jet Black Stāzon Pad, 147087 - Crushed Curry Classic Stampin' Pad, 147107 - Pool Party Classic Stampin' Pad, 147145 - Lemon Lime Twist Classic Stampin' Pad, 161666 - Lemon Lolly Classic Stampin' Pad

TOOLS

104430 - Stampin' Dimensionals, 162936 - Stampin' Brayer

EMBELLISHMENTS

158146 - Classic Matte Dots

BUNDLES

162794 - Bright Skies Bundle (English)

INSTRUCTIONS

Brayer curry onto white then die cut with detailed flower dies.



TECHNIQUES:

- Other

PAGE #: 51 **CRAFTER LEVEL:** Avid **CARD BASE SIZE:**

PAPER

122924 - Pool Party 8-1/2" X 11" Cardstock, 144245 - Lemon Lime Twist 8-1/2" X 11" Cardstock, 159276 - Basic White 8-1/2" X 11" Cardstock, 161640 - Delightfully Eclectic 12" X 12" (30.5 X 30.5 Cm) Designer Series Paper, 161720 - Lemon Lolly 8-1/2" X 11" Cardstock

INK

147052 - Flirty Flamingo Classic Stampin' Pad, 147101 - Calypso Coral Classic Stampin' Pad, 147107 - Pool Party Classic Stampin' Pad

TOOLS

104430 - Stampin' Dimensionals, 141825 - Foam Adhesive Strips, 153611 - Blending Brushes

EMBELLISHMENTS

142314 - Window Sheets, 155475 - Baker's Twine Essentials Pack, 161627 - Neutrals Adhesive-Backed Sequins

BUNDLES

162794 - Bright Skies Bundle (English)

INSTRUCTIONS

Die cut white and blended coral raindrops.



TECHNIQUES:

- Other

PAGE #: 52 **CRAFTER LEVEL:** Avid **CARD BASE SIZE:** Slim

STAMPS

162542 - Submarine Life Photopolymer Stamp Set (English)

PAPER

121045 - Basic Black 8-1/2" X 11" Cardstock, 159268 - Sweet Sorbet 8-1/2" X 11" Cardstock, 159276 - Basic White 8-1/2" X 11" Cardstock

INK

102283 - Versamark Pad, 147086 - Pumpkin Pie Classic Stampin' Pad, 147087 - Crushed Curry Classic Stampin' Pad, 147095 - Granny Apple Green Classic Stampin' Pad, 159210 - Tahitian Tide Classic Stampin' Pad, 159216 - Sweet Sorbet Classic Stampin' Pad

TOOLS

104430 - Stampin' Dimensionals, 152813 - Stampin' Seal, 153608 - Banners Pick A Punch

EMBELLISHMENTS

155554 - Basics Embossing Powders, 159195 - 2022-2024 In Color Baker's Twine Pack

INSTRUCTIONS

Stamp 3" x 6" piece then cut into 1.5" (4) pieces



TECHNIQUES:

- Heat Embossing

PAGE #: 52 **CRAFTER LEVEL:** Avid **CARD BASE SIZE:** Standard A2

PAPER

131199 - Crushed Curry 8-1/2" X 11" Cardstock, 155480 - Stampin' Up! Masking Paper, 159261 - Tahitian Tide 8-1/2" X 11" Cardstock, 159276 - Basic White 8-1/2" X 11" Cardstock, 161643 - Brights 6" X 6" (15.2 X 15.2 Cm) Designer Series Paper, 161717 - Pecan Pie 8-1/2" X 11" Cardstock

INK

147089 - Garden Green Classic Stampin' Pad, 147094 - Daffodil Delight Classic Stampin' Pad, 147095 - Granny Apple Green Classic Stampin' Pad, 159210 - Tahitian Tide Classic Stampin' Pad

TOOLS

104430 - Stampin' Dimensionals, 152813 - Stampin' Seal, 153611 - Blending Brushes

EMBELLISHMENTS

160449 - Flat Adhesive-Backed Pearls

BUNDLES

162774 - Submarine Life Bundle (English)

INSTRUCTIONS

Stamp wave image on cardstock, stamp again on masking paper. Fussy cut along wave on masking, place in position and add ink with a brush.



TECHNIQUES:

- Blending Brushes
- Fussy cutting
- Stamping off

PAGE #: 52 **CRAFTER LEVEL:** Casual **CARD BASE SIZE:** Square 3"

PAPER

159261 - Tahitian Tide 8-1/2" X 11" Cardstock, 159276 - Basic White 8-1/2" X 11" Cardstock

INK

132708 - Tuxedo Black Memento Ink Pad, 147086 - Pumpkin Pie Classic Stampin' Pad, 147095 - Granny Apple Green Classic Stampin' Pad, 159210 - Tahitian Tide Classic Stampin' Pad

TOOLS

104430 - Stampin' Dimensionals, 152813 - Stampin' Seal, 162793 - Bright Skies Dies

BUNDLES

162774 - Submarine Life Bundle (English)

INSTRUCTIONS



TECHNIQUES:

- Other

PAGE #: 53 **CRAFTER LEVEL:** Casual **CARD BASE SIZE:** Standard A4

PAPER

119683 - Daffodil Delight 8-1/2" X 11" Cardstock, 159276 - Basic White 8-1/2" X 11" Cardstock, 162735 - Meandering Meadows 6" X 6" (15.2 X 15.2 Cm) Designer Series Paper

INK

132708 - Tuxedo Black Memento Ink Pad, 161700 - Watercolor Pencils Assortment 1

TOOLS

104430 - Stampin' Dimensionals, 152813 - Stampin' Seal, 161597 - Nested Essentials Dies

EMBELLISHMENTS

162557 - Adhesive-Backed Hearts & Flowers

BUNDLES

162897 - Cutest Cows Bundle (English)

INSTRUCTIONS

Stamp on white and die cut out "windows" then color in with pencils.



TECHNIQUES:

- Other

PAGE #: 53

CRAFTER LEVEL: Avid

CARD BASE SIZE:

PAPER

101650 - Very Vanilla 8-1/2" X 11" Cardstock, 120953 - Crumb Cake 8-1/2" X 11" Cardstock, 146985 - Petal Pink 8-1/2" X 11" Cardstock, 159261 - Tahitian Tide 8-1/2" X 11" Cardstock, 159276 - Basic White 8-1/2" X 11" Cardstock, 161717 - Pecan Pie 8-1/2" X 11" Cardstock

INK

132708 - Tuxedo Black Memento Ink Pad, 154843 - Basic Black Stampin' Blends Combo Pack, 159216 - Sweet Sorbet Classic Stampin' Pad

TOOLS

104430 - Stampin' Dimensionals, 152813 - Stampin' Seal, 159878 - Very Best Trio Punch, 162864 - Everyday Details Dies

EMBELLISHMENTS

156485 - Black & White 1/4" (6.4 Mm) Gingham Ribbon

BUNDLES

162897 - Cutest Cows Bundle (English)

INSTRUCTIONS



TECHNIQUES:

- Stamping off

PAGE #: 53

CRAFTER LEVEL: Avid

CARD BASE SIZE: Standard A2

PAPER

105117 - Pumpkin Pie 8-1/2" X 11" Cardstock, 146990 - Granny Apple Green 8-1/2" X 11" Cardstock, 159276 - Basic White 8-1/2" X 11" Cardstock, 163170 - Glorious Gingham 6" X 6" (15.2 X 15.2 Cm) Designer Series Paper

INK

102283 - Versamark Pad, 132708 - Tuxedo Black Memento Ink Pad, 147095 - Granny Apple Green Classic Stampin' Pad, 154883 - Daffodil Delight Stampin' Blends Combo Pack, 154885 - Granny Apple Green Stampin' Blends Combo Pack, 154893 - Petal Pink Stampin' Blends Combo Pack, 154897 - Pumpkin Pie Stampin' Blends Combo Pack, 154904 - Smoky Slate Stampin' Blends Combo Pack, 159221 - Tahitian Tide Stampin' Blends Combo Pack, 159224 - Sweet Sorbet Stampin' Blends Combo Pack

TOOLS

104430 - Stampin' Dimensionals, 152813 - Stampin' Seal, 159183 - Stylish Shapes Dies, 162879 - Sending Love Dies

EMBELLISHMENTS

155554 - Basics Embossing Powders, 158136 - Brushed Brass Butterflies

BUNDLES

162897 - Cutest Cows Bundle (English)

INSTRUCTIONS



TECHNIQUES:

- Fussy cutting
- Heat Embossing

PAGE #: 54

CRAFTER LEVEL: Avid

CARD BASE SIZE: Standard A2

PAPER

102482 - Real Red 8-1/2" X 11" Cardstock, 119683 - Daffodil Delight 8-1/2" X 11" Cardstock, 131297 - Coastal Cabana 8-1/2" X 11" Cardstock, 159276 - Basic White 8-1/2" X 11" Cardstock, 161744 - Holographic Trio 12" X 12" (30.5 X 30.5 Cm) Specialty Paper, 162695 - Rock & Roll 12" X 12" (30.5 X 30.5 Cm) Designer Series Paper

INK

102283 - Versamark Pad, 132708 - Tuxedo Black Memento Ink Pad, 154894 - Pool Party Stampin' Blends Combo Pack

TOOLS

104430 - Stampin' Dimensionals, 110755 - Multipurpose Liquid Glue, 159173 - Deckled Rectangles Dies

EMBELLISHMENTS

155554 - Basics Embossing Powders

BUNDLES

162706 - Rock Star Bundle (English)

INSTRUCTIONS



TECHNIQUES:

- Fussy cutting
- Heat Embossing

PAGE #: 54

CRAFTER LEVEL: Avid

CARD BASE SIZE: Square 3"

PAPER

131297 - Coastal Cabana 8-1/2" X 11" Cardstock, 159276 - Basic White 8-1/2" X 11" Cardstock, 162695 - Rock & Roll 12" X 12" (30.5 X 30.5 Cm) Designer Series Paper

INK

132708 - Tuxedo Black Memento Ink Pad, 147097 - Coastal Cabana Classic Stampin' Pad, 154904 - Smoky Slate Stampin' Blends Combo Pack

TOOLS

104430 - Stampin' Dimensionals, 110755 - Multipurpose Liquid Glue, 141825 - Foam Adhesive Strips, 160518 - Small Blending Brushes

EMBELLISHMENTS

142314 - Window Sheets, 162709 - Adhesive-Backed Lightning & Stars

BUNDLES

162706 - Rock Star Bundle (English)

INSTRUCTIONS



TECHNIQUES:

- Blending Brushes

PAGE #: 54

CRAFTER LEVEL: Casual

CARD BASE SIZE: Standard A2

PAPER

102482 - Real Red 8-1/2" X 11" Cardstock, 121045 - Basic Black 8-1/2" X 11" Cardstock, 159276 - Basic White 8-1/2" X 11" Cardstock, 162695 - Rock & Roll 12" X 12" (30.5 X 30.5 Cm) Designer Series Paper

INK

132708 - Tuxedo Black Memento Ink Pad, 147084 - Real Red Classic Stampin' Pad, 161700 - Watercolor Pencils Assortment 1

TOOLS

104430 - Stampin' Dimensionals, 110755 - Multipurpose Liquid Glue

BUNDLES

162706 - Rock Star Bundle (English)

INSTRUCTIONS



TECHNIQUES:

- Watercolor Pencils Coloring

PAGE #: 54

CRAFTER LEVEL: Avid

CARD BASE SIZE: Slim

PAPER

102482 - Real Red 8-1/2" X 11" Cardstock, 121045 - Basic Black 8-1/2" X 11" Cardstock, 159276 - Basic White 8-1/2" X 11" Cardstock, 162695 - Rock & Roll 12" X 12" (30.5 X 30.5 Cm) Designer Series Paper

INK

147084 - Real Red Classic Stampin' Pad, 147277 - Uninked Stampin' Pad & Whisper White Refill, 154883 - Daffodil Delight Stampin' Blends Combo Pack

TOOLS

104430 - Stampin' Dimensionals, 110755 - Multipurpose Liquid Glue

EMBELLISHMENTS

155475 - Baker's Twine Essentials Pack, 155554 - Basics Embossing Powders

BUNDLES

162706 - Rock Star Bundle (English)

INSTRUCTIONS



TECHNIQUES:

- Fussy cutting
- Stampin' Blends Coloring

PAGE #: 54

CRAFTER LEVEL: Avid

CARD BASE SIZE:

PAPER

131202 - Smoky Slate 8-1/2" X 11" Cardstock, 131297 - Coastal Cabana 8-1/2" X 11" Cardstock, 159276 - Basic White 8-1/2" X 11" Cardstock, 162695 - Rock & Roll 12" X 12" (30.5 X 30.5 Cm) Designer Series Paper

INK

132708 - Tuxedo Black Memento Ink Pad, 154899 - Real Red Stampin' Blends Combo Pack, 154904 - Smoky Slate Stampin' Blends Combo Pack

TOOLS

104430 - Stampin' Dimensionals, 110755 - Multipurpose Liquid Glue

EMBELLISHMENTS

159577 - Real Red & Garden Green 3/8" (1 Cm) Ribbon Combo Pack, 162709 - Adhesive-Backed Lightning & Stars

BUNDLES

162706 - Rock Star Bundle (English)

INSTRUCTIONS

Finished box size: 5 x 5 x 1

Paper size: 7x7



TECHNIQUES:

- Splattering
- Stampin' Blends Coloring

PAGE #: 56

CRAFTER LEVEL: Avid

CARD BASE SIZE:

PAPER

100702 - Old Olive 8-1/2" X 11" Cardstock, 100867 - Night Of Navy 8-1/2" X 11" Cardstock, 102210 - 6" X 8" (15.2 X 20.3 Cm) Cellophane Bags, 119684 - Cajun Craze 8-1/2" X 11" Cardstock, 156457 - Silver Foil 12" X 12" (30.5 X 30.5 Cm) Specialty Pack, 159276 - Basic White 8-1/2" X 11" Cardstock

INK

102283 - Versamark Pad, 147085 - Cajun Craze Classic Stampin' Pad, 147087 - Crushed Curry Classic Stampin' Pad, 154879 - Cajun Craze Stampin' Blends Combo Pack, 154882 - Crumb Cake Stampin' Blends Combo Pack, 154891 - Night Of Navy Stampin' Blends Combo Pack, 154904 - Smoky Slate Stampin' Blends Combo Pack

TOOLS

104430 - Stampin' Dimensionals, 110755 - Multipurpose Liquid Glue, 160693 - Happy Labels Pick A Punch

EMBELLISHMENTS

104199 - Linen Thread, 155554 - Basics Embossing Powders

BUNDLES

162723 - Trusty Tools Bundle (English)

INSTRUCTIONS

Box paper size: 5 3/8 x 3 1/2

Scored at 1" on all sides.



TECHNIQUES:

- Paper Piecing
- Stampin' Blends Coloring

PAGE #: 56

CRAFTER LEVEL: Avid

CARD BASE SIZE: Standard A2

PAPER

100867 - Night Of Navy 8-1/2" X 11" Cardstock, 119684 - Cajun Craze 8-1/2" X 11" Cardstock, 120953 - Crumb Cake 8-1/2" X 11" Cardstock, 121044 - Basic Gray 8-1/2" X 11" Cardstock, 131199 - Crushed Curry 8-1/2" X 11" Cardstock, 153081 - Misty Moonlight 8-1/2" X 11" Cardstock, 156457 - Silver Foil 12" X 12" (30.5 X 30.5 Cm) Specialty Pack, 159276 - Basic White 8-1/2" X 11" Cardstock

INK

147085 - Cajun Craze Classic Stampin' Pad, 147110 - Night Of Navy Classic Stampin' Pad

TOOLS

104430 - Stampin' Dimensionals, 110755 - Multipurpose Liquid Glue, 133773 - Sponge Daubers, 141825 - Foam Adhesive Strips

BUNDLES

162723 - Trusty Tools Bundle (English)

INSTRUCTIONS



TECHNIQUES:

- Paper Piecing

PAGE #: 56

CRAFTER LEVEL: Casual

CARD BASE SIZE: Standard A2

PAPER

119684 - Cajun Craze 8-1/2" X 11" Cardstock, 159276 - Basic White 8-1/2" X 11" Cardstock, 161642 - Regals 6" X 6" (15.2 X 15.2 Cm) Designer Series Paper

INK

132708 - Tuxedo Black Memento Ink Pad, 147085 - Cajun Craze Classic Stampin' Pad, 147087 - Crushed Curry Classic Stampin' Pad, 147090 - Old Olive Classic Stampin' Pad, 154904 - Smoky Slate Stampin' Blends Combo Pack

TOOLS

104430 - Stampin' Dimensionals, 110755 - Multipurpose Liquid Glue

BUNDLES

162723 - Trusty Tools Bundle (English)

INSTRUCTIONS



TECHNIQUES:

- Create your own DSP
- Stampin' Blends Coloring

PAGE #: 57

CRAFTER LEVEL: Casual

CARD BASE SIZE: Standard A2

STAMPS

162810 - Cap & Gown Cling Stamp Set (English)

PAPER

100867 - Night Of Navy 8-1/2" X 11" Cardstock, 153081 - Misty Moonlight 8-1/2" X 11" Cardstock, 159276 - Basic White 8-1/2" X 11" Cardstock

INK

132708 - Tuxedo Black Memento Ink Pad, 154892 - Old Olive Stampin' Blends Combo Pack, 158152 - Stampin' Blends Deep Combo Pack, 159462 - Stampin' Blends Medium Combo

TOOLS

104430 - Stampin' Dimensionals, 110755 - Multipurpose Liquid Glue

EMBELLISHMENTS

155475 - Baker's Twine Essentials Pack, 161627 - Neutrals Adhesive-Backed Sequins

INSTRUCTIONS



TECHNIQUES:

- Fussy cutting
- Splattering
- Stampin' Blends Coloring

PAGE #: 57

CRAFTER LEVEL: Beginner

CARD BASE SIZE: Notecard

STAMPS

162810 - Cap & Gown Cling Stamp Set (English)

PAPER

100867 - Night Of Navy 8-1/2" X 11" Cardstock, 159276 - Basic White 8-1/2" X 11" Cardstock

INK

132708 - Tuxedo Black Memento Ink Pad, 161700 - Watercolor Pencils Assortment 1

TOOLS

104430 - Stampin' Dimensionals, 110755 - Multipurpose Liquid Glue

INSTRUCTIONS



TECHNIQUES:

- Watercolor Pencils Coloring

PAGE #: 57

CRAFTER LEVEL: Avid

CARD BASE SIZE: Standard A2

STAMPS

162810 - Cap & Gown Cling Stamp Set (English)

PAPER

100867 - Night Of Navy 8-1/2" X 11" Cardstock, 153081 - Misty Moonlight 8-1/2" X 11" Cardstock, 159276 - Basic White 8-1/2" X 11" Cardstock, 161745 - Gold Celebrations 12" X 12" (30.5 X 30.5 Cm) Specialty Designer Series Paper

INK

102283 - Versamark Pad, 154892 - Old Olive Stampin' Blends Combo Pack, 159461 - Stampin' Blends Medium Deep Combo, 159462 - Stampin' Blends Medium Combo, 159463 - Stampin' Blends Medium Light Combo Pack, 159465 - Stampin' Blends Light Combo Pack

TOOLS

104430 - Stampin' Dimensionals, 110755 - Multipurpose Liquid Glue

EMBELLISHMENTS

155475 - Baker's Twine Essentials Pack, 155766 - Simply Elegant Trim



TECHNIQUES:

- Other

INSTRUCTIONS

PAGE #: 58

CRAFTER LEVEL: Casual

CARD BASE SIZE: Standard A2

PAPER

120953 - Crumb Cake 8-1/2" X 11" Cardstock, 159268 - Sweet Sorbet 8-1/2" X 11" Cardstock, 159276 - Basic White 8-1/2" X 11" Cardstock

INK

101406 - Jet Black Stāzon Pad, 147107 - Pool Party Classic Stampin' Pad, 159216 - Sweet Sorbet Classic Stampin' Pad

TOOLS

104430 - Stampin' Dimensionals, 110755 - Multipurpose Liquid Glue, 153611 - Blending Brushes, 161185 - Reach For The Stars Dies

EMBELLISHMENTS

162758 - Rainbow Adhesive-Backed Dots

BUNDLES

162800 - Beach Day Bundle (English)



TECHNIQUES:

- Blending Brushes
- Other

INSTRUCTIONS

PAGE #: 58

CRAFTER LEVEL: Avid

CARD BASE SIZE: Standard A4

PAPER

122925 - Calypso Coral 8-1/2" X 11" Cardstock, 146981 - Shaded Spruce 8-1/2" X 11" Cardstock, 159268 - Sweet Sorbet 8-1/2" X 11" Cardstock, 159276 - Basic White 8-1/2" X 11" Cardstock, 161157 - Inked Botanicals 6" X 6" (15.2 X 15.2 Cm) Designer Series Paper, 161717 - Pecan Pie 8-1/2" X 11" Cardstock, 161720 - Lemon Lolly 8-1/2" X 11" Cardstock

INK

101406 - Jet Black Stāzon Pad, 147088 - Shaded Spruce Classic Stampin' Pad, 161665 - Pecan Pie Classic Stampin' Pad, 161693 - 2022-2024 In Color Stampin' Write Markers, 161697 - Neutrals Stampin' Write Markers, 161698 - Subtles Stampin' Write Markers

TOOLS

104430 - Stampin' Dimensionals, 110755 - Multipurpose Liquid Glue, 152813 - Stampin' Seal, 153611 - Blending Brushes, 162754 - Hot Air Balloon Dies

BUNDLES

162800 - Beach Day Bundle (English)

INSTRUCTIONS

Paper piece windows and life ring. Ink edges with brush against paper edge, then smooth by blending in circles. Color images with stampin' writes: lolly, sorbet, crumb and pecan.



TECHNIQUES:

- Other
- Paper Piecing

PAGE #: 58

CRAFTER LEVEL: Avid

CARD BASE SIZE: Notecard

PAPER

120953 - Crumb Cake 8-1/2" X 11" Cardstock, 122924 - Pool Party 8-1/2" X 11" Cardstock, 146981 - Shaded Spruce 8-1/2" X 11" Cardstock, 159276 - Basic White 8-1/2" X 11" Cardstock, 161717 - Pecan Pie 8-1/2" X 11" Cardstock

INK

101406 - Jet Black Stāzon Pad, 147051 - Melon Mambo Classic Stampin' Pad, 147101 - Calypso Coral Classic Stampin' Pad, 147277 - Uninked Stampin' Pad & Whisper White Refill, 153112 - Melon Mambo Stampin' Blends Combo Pack, 154881 - Calypso Coral Stampin' Blends Combo Pack, 159216 - Sweet Sorbet Classic Stampin' Pad, 159224 - Sweet Sorbet Stampin' Blends Combo Pack, 161666 - Lemon Lolly Classic Stampin' Pad, 161673 - Lemon Lolly Stampin' Blends Combo Pack

TOOLS

104430 - Stampin' Dimensionals, 110755 - Multipurpose Liquid Glue, 152813 - Stampin' Seal

EMBELLISHMENTS

162842 - Iridescent Foil Gems

BUNDLES

162800 - Beach Day Bundle (English)

INSTRUCTIONS

Stamp surfboard then color with corresponding light blend. To layer water twice, in lay fallout back in.



TECHNIQUES:

- Paper Piecing
- Stampin' Blends Coloring

PAGE #: 59

CRAFTER LEVEL: Avid

CARD BASE SIZE: Standard A2

STAMPS

161368 - Darling Details Photopolymer Stamp Set (English), 162732 - Cliffs By The Ocean Cling Stamp Set (English)

PAPER

120953 - Crumb Cake 8-1/2" X 11" Cardstock, 159276 - Basic White 8-1/2" X 11" Cardstock

INK

101406 - Jet Black Stāzon Pad, 149014 - Watercolor Pencils Assortment 2, 161700 - Watercolor Pencils Assortment 1

TOOLS

102845 - Blender Pens, 104430 - Stampin' Dimensionals, 110755 - Multipurpose Liquid Glue, 152813 - Stampin' Seal, 155314 - Stitched With Whimsy Dies, 161597 - Nested Essentials Dies, 161602 - Take Your Pick Crafter Tips

EMBELLISHMENTS

160430 - Pool Party 3/8" (1 Cm) Grosgrain Ribbon, 161627 - Neutrals Adhesive-Backed Sequins



TECHNIQUES:

- Other

INSTRUCTIONS

Pencils: cabana, espresso, garden, basic gray. Use pen blade end to cut images and center holes in cliff.

PAGE #: 59

CRAFTER LEVEL: Avid

CARD BASE SIZE: Notecard

STAMPS

162692 - Blueberry Bunches Cling Stamp Set (English), 162732 - Cliffs By The Ocean Cling Stamp Set (English)

PAPER

149612 - Fluid 100 Watercolor Paper, 159276 - Basic White 8-1/2" X 11" Cardstock, 162616 - Nature's Sweetness 12" X 12" (30,5 X 30,5 Cm) Specialty Designer Series Paper

INK

102283 - Versamark Pad, 147088 - Shaded Spruce Classic Stampin' Pad, 147101 - Calypso Coral Classic Stampin' Pad, 147107 - Pool Party Classic Stampin' Pad, 159216 - Sweet Sorbet Classic Stampin' Pad, 161665 - Pecan Pie Classic Stampin' Pad, 161666 - Lemon Lolly Classic Stampin' Pad

TOOLS

104430 - Stampin' Dimensionals, 110755 - Multipurpose Liquid Glue, 151298 - Water Painters, 160693 - Happy Labels Pick A Punch

EMBELLISHMENTS

155475 - Baker's Twine Essentials Pack, 155555 - Metallics Embossing Powders, 162824 - Champagne Iridescent Dots



TECHNIQUES:

- Watercolor • Wash
- Watercolor • Resist

INSTRUCTIONS

PAGE #: 60

CRAFTER LEVEL: Avid

CARD BASE SIZE:

PAPER

133676 - Mossy Meadow 8-1/2" X 11" Cardstock, 133679 - Lost Lagoon 8-1/2" X 11" Cardstock, 159276 - Basic White 8-1/2" X 11" Cardstock, 161725 - Wild Wheat 8-1/2" X 11" Cardstock, 161752 - 2023–2025 In Color Treat Bags, 162814 - Poetic Expressions 12" X 12" (30.5 X 30.5 Cm) Designer Series Paper

INK

101406 - Jet Black Stāzon Pad, 132708 - Tuxedo Black Memento Ink Pad, 161659 - Boho Blue Stampin' Blends Combo Pack, 161660 - Moody Mauve Stampin' Blends Combo Pack, 161661 - Wild Wheat Stampin' Blends Combo Pack, 161664 - Bubble Bath Classic Stampin' Pad, 161675 - Bubble Bath Stampin' Blends Combo Pack, 161680 - Lost Lagoon Stampin' Blends Combo Pack, 161700 - Watercolor Pencils Assortment 1

TOOLS

104430 - Stampin' Dimensionals, 110755 - Multipurpose Liquid Glue, 152813 - Stampin' Seal

EMBELLISHMENTS

104199 - Linen Thread, 155475 - Baker's Twine Essentials Pack, 162824 - Champagne Iridescent Dots

BUNDLES

162822 - Thoughtful Expressions Bundle (English)

INSTRUCTIONS

Black pencil to create subtle shadow.



TECHNIQUES:

- Stampin' Blends Coloring
- Watercolor Pencils Coloring

PAGE #: 60

CRAFTER LEVEL: Avid

CARD BASE SIZE: Standard A2

PAPER

101650 - Very Vanilla 8-1/2" X 11" Cardstock, 120953 - Crumb Cake 8-1/2" X 11" Cardstock, 133679 - Lost Lagoon 8-1/2" X 11" Cardstock, 162814 - Poetic Expressions 12" X 12" (30.5 X 30.5 Cm) Designer Series Paper

INK

101406 - Jet Black Stāzon Pad, 147111 - Mossy Meadow Classic Stampin' Pad, 161660 - Moody Mauve Stampin' Blends Combo Pack, 161678 - Lost Lagoon Classic Stampin' Pad

TOOLS

102845 - Blender Pens, 104430 - Stampin' Dimensionals, 110755 - Multipurpose Liquid Glue, 152813 - Stampin' Seal

EMBELLISHMENTS

162744 - Pecan Pie 3/8" (1 Cm) Center Stripe Ribbon, 162842 - Iridescent Foil Gems

BUNDLES

162822 - Thoughtful Expressions Bundle (English)

INSTRUCTIONS

Use blender pen and ink lids to color flowers and leaves. Create frame with dies by nesting two sized together and running through.



TECHNIQUES:

- Blending Brushes
- Stampin' Blends Coloring

PAGE #: 60

CRAFTER LEVEL: Avid

CARD BASE SIZE: Square 3"

PAPER

120953 - Crumb Cake 8-1/2" X 11" Cardstock, 133679 - Lost Lagoon 8-1/2" X 11" Cardstock, 159276 - Basic White 8-1/2" X 11" Cardstock, 161725 - Wild Wheat 8-1/2" X 11" Cardstock, 162814 - Poetic Expressions 12" X 12" (30.5 X 30.5 Cm) Designer Series Paper

INK

141897 - Wink Of Stella Glitter Brush, 161651 - Wild Wheat Classic Stampin' Pad, 161660 - Moody Mauve Stampin' Blends Combo Pack, 161661 - Wild Wheat Stampin' Blends Combo Pack, 161675 - Bubble Bath Stampin' Blends Combo Pack, 161678 - Lost Lagoon Classic Stampin' Pad, 161680 - Lost Lagoon Stampin' Blends Combo Pack

TOOLS

104430 - Stampin' Dimensionals, 110755 - Multipurpose Liquid Glue, 152813 - Stampin' Seal

EMBELLISHMENTS

161171 - Lost Lagoon ¼" (6.4 Mm) Bordered Ribbon, 162824 - Champagne Iridescent Dots

BUNDLES

162822 - Thoughtful Expressions Bundle (English)

INSTRUCTIONS



TECHNIQUES:

- Stampin' Blends Coloring

PAGE #: 60

CRAFTER LEVEL: Avid

CARD BASE SIZE: Mini Slim

PAPER

120953 - Crumb Cake 8-1/2" X 11" Cardstock, 133676 - Mossy Meadow 8-1/2" X 11" Cardstock, 159276 - Basic White 8-1/2" X 11" Cardstock, 161724 - Boho Blue 8-1/2" X 11" Cardstock, 161725 - Wild Wheat 8-1/2" X 11" Cardstock

INK

132708 - Tuxedo Black Memento Ink Pad, 147111 - Mossy Meadow Classic Stampin' Pad, 154890 - Mossy Meadow Stampin' Blends Combo Pack, 161659 - Boho Blue Stampin' Blends Combo Pack, 161661 - Wild Wheat Stampin' Blends Combo Pack, 161680 - Lost Lagoon Stampin' Blends Combo Pack

TOOLS

104430 - Stampin' Dimensionals, 110755 - Multipurpose Liquid Glue, 152813 - Stampin' Seal

EMBELLISHMENTS

162644 - Gold 1/8" (3.2 Mm) Faux Leather Trim, 162824 - Champagne Iridescent Dots

BUNDLES

162822 - Thoughtful Expressions Bundle (English)

INSTRUCTIONS



TECHNIQUES:

- Stampin' Blends Coloring

PAGE #: 60

CRAFTER LEVEL: Avid

CARD BASE SIZE: Standard A2

PAPER

149612 - Fluid 100 Watercolor Paper, 159276 - Basic White 8-1/2" X 11" Cardstock, 161746 - 2023–2025 In Color™ 12" X 12" (30.5 X 30.5 Cm) Luster Specialty Paper, 162814 - Poetic Expressions 12" X 12" (30.5 X 30.5 Cm) Designer Series Paper

INK

147116 - Crumb Cake Classic Stampin' Pad, 161647 - Copper Clay Classic Stampin' Pad, 161649 - Moody Mauve Classic Stampin' Pad, 161651 - Wild Wheat Classic Stampin' Pad, 161670 - Bubble Bath Classic Stampin' Ink Refill, 161678 - Lost Lagoon Classic Stampin' Pad

TOOLS

104430 - Stampin' Dimensionals, 110755 - Multipurpose Liquid Glue, 151298 - Water Painters, 152813 - Stampin' Seal

EMBELLISHMENTS

155766 - Simply Elegant Trim, 161517 - Natural 1/4" (6.4 Mm) Wavy Trim, 162824 - Champagne Iridescent Dots

BUNDLES

162822 - Thoughtful Expressions Bundle (English)

INSTRUCTIONS

Stamp flowers and bird onto watercolor paper, stamped off. When watercoloring over lines will start to fade.



TECHNIQUES:

- Distressing
- Stamping off
- Watercolor – No Line

PAGE #: 62

CRAFTER LEVEL: Avid

CARD BASE SIZE: Notecard

PAPER

101856 - Vellum 8-1/2" X 11" Cardstock, 133676 - Mossy Meadow 8-1/2" X 11" Cardstock, 159276 - Basic White 8-1/2" X 11" Cardstock, 161718 - Bubble Bath 8-1/2" X 11" Cardstock, 161725 - Wild Wheat 8-1/2" X 11" Cardstock, 162814 - Poetic Expressions 12" X 12" (30.5 X 30.5 Cm) Designer Series Paper

INK

147116 - Crumb Cake Classic Stampin' Pad, 154890 - Mossy Meadow Stampin' Blends Combo Pack, 161647 - Copper Clay Classic Stampin' Pad, 161695 - 2023–2025 In Color Stampin' Write Markers

TOOLS

104430 - Stampin' Dimensionals, 110755 - Multipurpose Liquid Glue, 141825 - Foam Adhesive Strips, 152813 - Stampin' Seal

EMBELLISHMENTS

142314 - Window Sheets, 162824 - Champagne Iridescent Dots

BUNDLES

162822 - Thoughtful Expressions Bundle (English)

INSTRUCTIONS

Boho stampin' write for splatter. Color dots with mossy blend for flower centers. Use two sizes of nested dies to create "frame". Color branches with stampin' writes: bubble, boho, copper, wheat.



TECHNIQUES:

- Distressing
- Modifying Embellishments
- Splattering
- Stampin' Blends Coloring

PAGE #: 62 **CRAFTER LEVEL:** Avid **CARD BASE SIZE:** Narrow Notecard

PAPER

101650 - Very Vanilla 8-1/2" X 11" Cardstock, 101856 - Vellum 8-1/2" X 11" Cardstock, 120953 - Crumb Cake 8-1/2" X 11" Cardstock, 133679 - Lost Lagoon 8-1/2" X 11" Cardstock, 159276 - Basic White 8-1/2" X 11" Cardstock, 161725 - Wild Wheat 8-1/2" X 11" Cardstock

INK

161649 - Moody Mauve Classic Stampin' Pad, 161678 - Lost Lagoon Classic Stampin' Pad

TOOLS

104430 - Stampin' Dimensionals, 110755 - Multipurpose Liquid Glue, 152813 - Stampin' Seal, 153611 - Blending Brushes

EMBELLISHMENTS

162824 - Champagne Iridescent Dots

BUNDLES

162822 - Thoughtful Expressions Bundle (English)

INSTRUCTIONS

Use bone folder to lightly curl sentiment. Use snips to distress crumb strip.



TECHNIQUES:

- Blending Brushes

PAGE #: 63 **CRAFTER LEVEL:** Avid **CARD BASE SIZE:** Standard A2

STAMPS

162689 - Quiet Reflection Cling Stamp Set (English)

PAPER

101650 - Very Vanilla 8-1/2" X 11" Cardstock, 120953 - Crumb Cake 8-1/2" X 11" Cardstock, 133676 - Mossy Meadow 8-1/2" X 11" Cardstock, 161534 - Let's Go Fishing 12" X 12" (30.5 X 30.5 Cm) Designer Series Paper, 161725 - Wild Wheat 8-1/2" X 11" Cardstock

INK

147111 - Mossy Meadow Classic Stampin' Pad, 161651 - Wild Wheat Classic Stampin' Pad

TOOLS

104430 - Stampin' Dimensionals, 151298 - Water Painters, 152813 - Stampin' Seal, 160518 - Small Blending Brushes, 163203 - Notes Of Nature Dies

EMBELLISHMENTS

104199 - Linen Thread

INSTRUCTIONS

Use small blending brush along the edges of the inked image to smooth out any puddled ink. Water painter is for splattering.



TECHNIQUES:

- Distressing
- Splattering

PAGE #: 63

CRAFTER LEVEL: Avid

CARD BASE SIZE: Notecard

STAMPS

162689 - Quiet Reflection Cling Stamp Set (English)

PAPER

120953 - Crumb Cake 8-1/2" X 11" Cardstock, 133676 - Mossy Meadow 8-1/2" X 11" Cardstock, 133679 - Lost Lagoon 8-1/2" X 11" Cardstock, 159276 - Basic White 8-1/2" X 11" Cardstock

INK

147111 - Mossy Meadow Classic Stampin' Pad, 161678 - Lost Lagoon Classic Stampin' Pad

TOOLS

104430 - Stampin' Dimensionals, 110755 - Multipurpose Liquid Glue, 133773 - Sponge Daubers, 155563 - Tailor Made Tags Dies, 160518 - Small Blending Brushes, 161285 - Foursquare Decorative Masks

EMBELLISHMENTS

161627 - Neutrals Adhesive-Backed Sequins

INSTRUCTIONS

Use daubers to add ink to stamp.



TECHNIQUES:

- Blending Brushes
- Stencils – Blending Brushes

PAGE #: 64

CRAFTER LEVEL: Casual

CARD BASE SIZE: Standard A2

PAPER

101856 - Vellum 8-1/2" X 11" Cardstock, 159267 - Orchid Oasis 8-1/2" X 11" Cardstock, 159276 - Basic White 8-1/2" X 11" Cardstock, 162735 - Meandering Meadows 6" X 6" (15.2 X 15.2 Cm) Designer Series Paper

INK

147051 - Melon Mambo Classic Stampin' Pad, 159214 - Orchid Oasis Classic Stampin' Pad

TOOLS

103683 - Mini Glue Dots, 104430 - Stampin' Dimensionals, 152813 - Stampin' Seal, 162935 - Layered Florals 3D Embossing Folder

EMBELLISHMENTS

158827 - Glossy Dots Assortment

BUNDLES

162667 - Stippled Roses Bundle (English)

INSTRUCTIONS



TECHNIQUES:

- Other

PAGE #: 64

CRAFTER LEVEL: Avid

CARD BASE SIZE:

PAPER

146981 - Shaded Spruce 8-1/2" X 11" Cardstock, 159276 - Basic White 8-1/2" X 11" Cardstock, 160839 - Vellum Basics 12" X 12" (30.5 X 30.5 Cm) Specialty Designer Series Paper, 161717 - Pecan Pie 8-1/2" X 11" Cardstock, 162735 - Meandering Meadows 6" X 6" (15.2 X 15.2 Cm) Designer Series Paper

INK

147086 - Pumpkin Pie Classic Stampin' Pad, 147088 - Shaded Spruce Classic Stampin' Pad, 154897 - Pumpkin Pie Stampin' Blends Combo Pack, 154903 - Shaded Spruce Stampin' Blends Combo Pack

TOOLS

103683 - Mini Glue Dots, 104430 - Stampin' Dimensionals, 154031 - Tear & Tape Adhesive

EMBELLISHMENTS

162744 - Pecan Pie 3/8" (1 Cm) Center Stripe Ribbon

BUNDLES

162667 - Stippled Roses Bundle (English)

INSTRUCTIONS

Box top 6 x 6, scored 1" all the way around
Box bottom 6.5 x 6.5, Scored at 1.25" all the way around.
I colored the flowers with blends.



TECHNIQUES:

- Stampin' Blends Coloring

PAGE #: 65

CRAFTER LEVEL: Avid

CARD BASE SIZE: Standard A2

PAPER

146981 - Shaded Spruce 8-1/2" X 11" Cardstock, 149612 - Fluid 100 Watercolor Paper, 159267 - Orchid Oasis 8-1/2" X 11" Cardstock, 159276 - Basic White 8-1/2" X 11" Cardstock, 162593 - Perennial Lavender 12" X 12" (30.5 X 30.5 Cm) Designer Series Paper

INK

147051 - Melon Mambo Classic Stampin' Pad, 147086 - Pumpkin Pie Classic Stampin' Pad, 147088 - Shaded Spruce Classic Stampin' Pad, 159214 - Orchid Oasis Classic Stampin' Pad

TOOLS

103683 - Mini Glue Dots, 104430 - Stampin' Dimensionals, 151298 - Water Painters, 152813 - Stampin' Seal, 159183 - Stylish Shapes Dies, 162935 - Layered Florals 3D Embossing Folder

EMBELLISHMENTS

158130 - Iridescent Rhinestones Basic Jewels

BUNDLES

162667 - Stippled Roses Bundle (English)

INSTRUCTIONS



TECHNIQUES:

- Watercolor • Detailed

PAGE #: 65

CRAFTER LEVEL: Avid

CARD BASE SIZE: Standard A2

STAMPS

162684 - Inspirational Sketches Cling Stamp Set (English)

PAPER

101856 - Vellum 8-1/2" X 11" Cardstock, 146981 - Shaded Spruce 8-1/2" X 11" Cardstock, 149612 - Fluid 100 Watercolor Paper, 162735 - Meandering Meadows 6" X 6" (15.2 X 15.2 Cm) Designer Series Paper

INK

101406 - Jet Black Stāzon Pad, 147088 - Shaded Spruce Classic Stampin' Pad, 147277 - Uninked Stampin' Pad & Whisper White Refill, 159214 - Orchid Oasis Classic Stampin' Pad, 161665 - Pecan Pie Classic Stampin' Pad

TOOLS

103683 - Mini Glue Dots, 151298 - Water Painters, 152813 - Stampin' Seal, 155314 - Stitched With Whimsy Dies

EMBELLISHMENTS

155475 - Baker's Twine Essentials Pack, 155554 - Basics Embossing Powders

INSTRUCTIONS



TECHNIQUES:

- Watercolor • Detailed

PAGE #: 65

CRAFTER LEVEL: Avid

CARD BASE SIZE: Notecard

STAMPS

162684 - Inspirational Sketches Cling Stamp Set (English)

PAPER

159276 - Basic White 8-1/2" X 11" Cardstock, 162616 - Nature's Sweetness 12" X 12" (30.5 X 30.5 Cm) Specialty Designer Series Paper, 162735 - Meandering Meadows 6" X 6" (15.2 X 15.2 Cm) Designer Series Paper

INK

102283 - Versamark Pad, 132708 - Tuxedo Black Memento Ink Pad, 154897 - Pumpkin Pie Stampin' Blends Combo Pack, 161674 - Pecan Pie Stampin' Blends Combo Pack

TOOLS

103683 - Mini Glue Dots, 104430 - Stampin' Dimensionals, 152813 - Stampin' Seal, 155563 - Tailor Made Tags Dies

EMBELLISHMENTS

155475 - Baker's Twine Essentials Pack, 155555 - Metallics Embossing Powders

INSTRUCTIONS



TECHNIQUES:

- Heat Embossing
- Stampin' Blends Coloring

PAGE #: 66 **CRAFTER LEVEL:** Avid **CARD BASE SIZE:** Standard A2

PAPER

119683 - Daffodil Delight 8-1/2" X 11" Cardstock, 155613 - Fresh Freesia 8-1/2" X 11" Cardstock, 159276 - Basic White 8-1/2" X 11" Cardstock, 162828 - Just Kiddin' 12" X 12" (30.5 X 30.5 Cm) Designer Series Paper

INK

147052 - Flirty Flamingo Classic Stampin' Pad, 147103 - Highland Heather Classic Stampin' Pad

TOOLS

104430 - Stampin' Dimensionals, 110755 - Multipurpose Liquid Glue, 152813 - Stampin' Seal

EMBELLISHMENTS

162759 - Baker's Twine Three Color Pack

BUNDLES

162608 - Perennial Postage Bundle (English)

INSTRUCTIONS



TECHNIQUES:

- Other

PAGE #: 67 **CRAFTER LEVEL:** Avid **CARD BASE SIZE:** Standard A2

PAPER

101650 - Very Vanilla 8-1/2" X 11" Cardstock, 132622 - Gold Foil Sheets, 155613 - Fresh Freesia 8-1/2" X 11" Cardstock, 159276 - Basic White 8-1/2" X 11" Cardstock, 160839 - Vellum Basics 12" X 12" (30.5 X 30.5 Cm) Specialty Designer Series Paper, 162593 - Perennial Lavender 12" X 12" (30.5 X 30.5 Cm) Designer Series Paper

INK

147103 - Highland Heather Classic Stampin' Pad

TOOLS

103683 - Mini Glue Dots, 104430 - Stampin' Dimensionals, 152813 - Stampin' Seal

EMBELLISHMENTS

155475 - Baker's Twine Essentials Pack, 162611 - Purple Fine Shimmer Gems

BUNDLES

162570 - Adoring Hearts Bundle (English)

INSTRUCTIONS



TECHNIQUES:

- Stamping off

PAGE #: 67

CRAFTER LEVEL: Avid

CARD BASE SIZE: Standard A2

PAPER

119683 - Daffodil Delight 8-1/2" X 11" Cardstock, 155613 - Fresh Freesia 8-1/2" X 11" Cardstock, 159276 - Basic White 8-1/2" X 11" Cardstock, 161289 - Fresh As A Daisy 12" X 12" (30.5 X 30.5 Cm) Designer Series Paper, 161724 - Boho Blue 8-1/2" X 11" Cardstock

INK

102283 - Versamark Pad, 147094 - Daffodil Delight Classic Stampin' Pad, 155611 - Fresh Freesia Classic Stampin' Pad

TOOLS

104430 - Stampin' Dimensionals, 110755 - Multipurpose Liquid Glue, 152813 - Stampin' Seal

EMBELLISHMENTS

155554 - Basics Embossing Powders

BUNDLES

162794 - Bright Skies Bundle (English)

INSTRUCTIONS



TECHNIQUES:

- Heat Embossing

PAGE #: 67

CRAFTER LEVEL: Avid

CARD BASE SIZE: Standard A2

PAPER

159276 - Basic White 8-1/2" X 11" Cardstock, 161157 - Inked Botanicals 6" X 6" (15.2 X 15.2 Cm) Designer Series Paper

INK

132708 - Tuxedo Black Memento Ink Pad, 147094 - Daffodil Delight Classic Stampin' Pad, 147143 - Berry Burst Classic Stampin' Pad, 154883 - Daffodil Delight Stampin' Blends Combo Pack, 161664 - Bubble Bath Classic Stampin' Pad

TOOLS

104430 - Stampin' Dimensionals, 152813 - Stampin' Seal

BUNDLES

162554 - Bee My Valentine Bundle (English)

INSTRUCTIONS

Color wings with stampin' blends.



TECHNIQUES:

- Stampin' Blends Coloring

PAGE #: 67

CRAFTER LEVEL: Avid

CARD BASE SIZE: Standard A2

PAPER

120953 - Crumb Cake 8-1/2" X 11" Cardstock, 146990 - Granny Apple Green 8-1/2" X 11" Cardstock, 149612 - Fluid 100 Watercolor Paper, 159276 - Basic White 8-1/2" X 11" Cardstock, 162546 - Bee Mine 12" X 12" (30.5 X 30.5 Cm) Designer Series Paper

INK

132708 - Tuxedo Black Memento Ink Pad, 147052 - Flirty Flamingo Classic Stampin' Pad, 154882 - Crumb Cake Stampin' Blends Combo Pack, 154883 - Daffodil Delight Stampin' Blends Combo Pack, 154884 - Flirty Flamingo Stampin' Blends Combo Pack, 161650 - Boho Blue Classic Stampin' Pad, 161659 - Boho Blue Stampin' Blends Combo Pack, 161665 - Pecan Pie Classic Stampin' Pad

TOOLS

104430 - Stampin' Dimensionals, 110755 - Multipurpose Liquid Glue, 151298 - Water Painters, 152813 - Stampin' Seal

BUNDLES

162800 - Beach Day Bundle (English)

INSTRUCTIONS

Create a watercolor wash of boho blue on top and pecan pie below on watercolor paper.



TECHNIQUES:

- Stampin' Blends Coloring
- Watercolor • Wash

PAGE #: 68

CRAFTER LEVEL: Avid

CARD BASE SIZE: Standard A2

PAPER

149612 - Fluid 100 Watercolor Paper, 159276 - Basic White 8-1/2" X 11" Cardstock, 162747 - Lighter Than Air 6" X 6" (15.2 X 15.2 Cm) Designer Series Paper

INK

101406 - Jet Black Stāzon Pad, 141402 - Flirty Flamingo Classic Stampin' Ink Refill, 147116 - Crumb Cake Classic Stampin' Pad, 147163 - Granny Apple Green Classic Stampin' Ink Refill, 147168 - Balmly Blue Classic Stampin' Ink Refill, 161671 - Lemon Lolly Classic Stampin' Ink Refill

TOOLS

104430 - Stampin' Dimensionals, 151298 - Water Painters, 152813 - Stampin' Seal

EMBELLISHMENTS

162758 - Rainbow Adhesive-Backed Dots

BUNDLES

162674 - Enduring Beauty Bundle (English)

INSTRUCTIONS



TECHNIQUES:

- Watercolor • Detailed

PAGE #: 68

CRAFTER LEVEL: Avid

CARD BASE SIZE: Standard A2

PAPER

146982 - Balmy Blue 8-1/2" X 11" Cardstock, 159276 - Basic White 8-1/2" X 11" Cardstock, 161717 - Pecan Pie 8-1/2" X 11" Cardstock, 162735 - Meandering Meadows 6" X 6" (15.2 X 15.2 Cm) Designer Series Paper

INK

147116 - Crumb Cake Classic Stampin' Pad, 161665 - Pecan Pie Classic Stampin' Pad

TOOLS

103683 - Mini Glue Dots, 104430 - Stampin' Dimensionals, 110755 - Multipurpose Liquid Glue, 144108 - Mini Stampin' Dimensionals, 152813 - Stampin' Seal

EMBELLISHMENTS

162743 - Adhesive-Backed Dragonflies & Birds

BUNDLES

162680 - Delicate Forest Bundle (English)

INSTRUCTIONS



TECHNIQUES:

- Fussy cutting

PAGE #: 68

CRAFTER LEVEL: Avid

CARD BASE SIZE: Standard A2

PAPER

159276 - Basic White 8-1/2" X 11" Cardstock, 161720 - Lemon Lolly 8-1/2" X 11" Cardstock

INK

102283 - Versamark Pad, 147052 - Flirty Flamingo Classic Stampin' Pad, 147095 - Granny Apple Green Classic Stampin' Pad, 147116 - Crumb Cake Classic Stampin' Pad, 161666 - Lemon Lolly Classic Stampin' Pad

TOOLS

104430 - Stampin' Dimensionals, 110755 - Multipurpose Liquid Glue, 133773 - Sponge Daubers, 152392 - Paper Trimmer

EMBELLISHMENTS

155554 - Basics Embossing Powders, 162743 - Adhesive-Backed Dragonflies & Birds

BUNDLES

162786 - Easter Lilies Bundle (English)

INSTRUCTIONS

Embossed lines on card base were done with scoring blade on trimmer.



TECHNIQUES:

- Other

PAGE #: 68

CRAFTER LEVEL: Avid

CARD BASE SIZE: Standard A2

PAPER

120953 - Crumb Cake 8-1/2" X 11" Cardstock, 146990 - Granny Apple Green 8-1/2" X 11" Cardstock, 159276 - Basic White 8-1/2" X 11" Cardstock, 161717 - Pecan Pie 8-1/2" X 11" Cardstock

INK

132708 - Tuxedo Black Memento Ink Pad, 147163 - Granny Apple Green Classic Stampin' Ink Refill, 154843 - Basic Black Stampin' Blends Combo Pack, 154882 - Crumb Cake Stampin' Blends Combo Pack, 154884 - Flirty Flamingo Stampin' Blends Combo Pack, 154885 - Granny Apple Green Stampin' Blends Combo Pack, 154893 - Petal Pink Stampin' Blends Combo Pack, 154904 - Smoky Slate Stampin' Blends Combo Pack, 161673 - Lemon Lolly Stampin' Blends Combo Pack, 161694 - 2023 New Core Colors Stampin' Write Markers

TOOLS

104430 - Stampin' Dimensionals, 110755 - Multipurpose Liquid Glue, 144108 - Mini Stampin' Dimensionals, 152392 - Paper Trimmer, 152813 - Stampin' Seal, 153611 - Blending Brushes

BUNDLES

162897 - Cutest Cows Bundle (English)

INSTRUCTIONS

Use the scoring blade on your trimmer to create lines on fence. Then go over the lines with pecan pie stampin' write marker.



TECHNIQUES:

- Blending Brushes
- Fussy cutting
- Other
- Stampin' Blends Coloring

PAGE #: 69

CRAFTER LEVEL: Avid

CARD BASE SIZE: Standard A2

PAPER

120953 - Crumb Cake 8-1/2" X 11" Cardstock, 159276 - Basic White 8-1/2" X 11" Cardstock, 162931 - Sweet Thoughts Memories & More Cards & Envelopes

INK

102283 - Versamark Pad, 147108 - Petal Pink Classic Stampin' Pad, 161665 - Pecan Pie Classic Stampin' Pad, 163136 - Stampin' Write Markers Collection

TOOLS

103683 - Mini Glue Dots, 104430 - Stampin' Dimensionals, 152813 - Stampin' Seal

EMBELLISHMENTS

155555 - Metallics Embossing Powders, 160387 - Pastel Adhesive-Backed Sequins, 161636 - 3/4" (1.9 Cm) Herringbone Ribbon

BUNDLES

162889 - Heartfelt Hexagon Bundle (English)

INSTRUCTIONS

Stampin' writes: crumb, garden, pool, flirty.



TECHNIQUES:

- Other

PAGE #: 69

CRAFTER LEVEL: Avid

CARD BASE SIZE: Standard A2

PAPER

159229 - Basic White 8-1/2" X 11" Thick Cardstock, 161157 - Inked Botanicals 6" X 6" (15.2 X 15.2 Cm) Designer Series Paper, 161534 - Let's Go Fishing 12" X 12" (30.5 X 30.5 Cm) Designer Series Paper

INK

141979 - Embossing Paste, 147052 - Flirty Flamingo Classic Stampin' Pad, 147095 - Granny Apple Green Classic Stampin' Pad, 147105 - Balmy Blue Classic Stampin' Pad, 147116 - Crumb Cake Classic Stampin' Pad

TOOLS

104430 - Stampin' Dimensionals, 110755 - Multipurpose Liquid Glue, 142808 - Palette Knives, 152813 - Stampin' Seal, 159178 - Artistic Mix Decorative Masks

EMBELLISHMENTS

158146 - Classic Matte Dots

BUNDLES

162781 - Flower Cart Bundle (English)

INSTRUCTIONS



TECHNIQUES:

- Stencils – embossing paste

PAGE #: 69

CRAFTER LEVEL: Avid

CARD BASE SIZE: Standard A2

PAPER

122925 - Calypso Coral 8-1/2" X 11" Cardstock, 146985 - Petal Pink 8-1/2" X 11" Cardstock, 159229 - Basic White 8-1/2" X 11" Thick Cardstock

INK

102283 - Versamark Pad, 147102 - Soft Sea Foam Classic Stampin' Pad, 147116 - Crumb Cake Classic Stampin' Pad, 147145 - Lemon Lime Twist Classic Stampin' Pad, 151508 - Saddle Brown Stazon Ink Pad, 161674 - Pecan Pie Stampin' Blends Combo Pack

TOOLS

104430 - Stampin' Dimensionals, 110755 - Multipurpose Liquid Glue, 144108 - Mini Stampin' Dimensionals, 151298 - Water Painters

EMBELLISHMENTS

104199 - Linen Thread, 155554 - Basics Embossing Powders, 162824 - Champagne Iridescent Dots

BUNDLES

162865 - Everyday Details Bundle

INSTRUCTIONS



TECHNIQUES:

- Heat Embossing
- Stampin' Blends Coloring
- Watercolor • Detailed

PAGE #: 69

CRAFTER LEVEL: Avid

CARD BASE SIZE: Standard A2

PAPER

101856 - Vellum 8-1/2" X 11" Cardstock, 102584 - Garden Green 8-1/2" X 11" Cardstock, 119683 - Daffodil Delight 8-1/2" X 11" Cardstock, 122924 - Pool Party 8-1/2" X 11" Cardstock, 122925 - Calypso Coral 8-1/2" X 11" Cardstock, 144245 - Lemon Lime Twist 8-1/2" X 11" Cardstock, 146985 - Petal Pink 8-1/2" X 11" Cardstock, 159276 - Basic White 8-1/2" X 11" Cardstock, 161644 - Subtles 6" X 6" (15.2 X 15.2 Cm) Designer Series Paper, 161717 - Pecan Pie 8-1/2" X 11" Cardstock, 161720 - Lemon Lolly 8-1/2" X 11" Cardstock

INK

102283 - Versamark Pad, 147094 - Daffodil Delight Classic Stampin' Pad, 147107 - Pool Party Classic Stampin' Pad, 147108 - Petal Pink Classic Stampin' Pad, 147114 - Early Espresso Classic Stampin' Pad

TOOLS

103683 - Mini Glue Dots, 104430 - Stampin' Dimensionals, 110755 - Multipurpose Liquid Glue, 153611 - Blending Brushes

EMBELLISHMENTS

155554 - Basics Embossing Powders, 158136 - Brushed Brass Butterflies

BUNDLES

162808 - Excellent Eggs Bundle (English)

INSTRUCTIONS

Use blending brushes to blend color over DSP.



TECHNIQUES:

- Blending Brushes
- Heat Embossing

PAGE #: 70

CRAFTER LEVEL: Avid

CARD BASE SIZE: Standard A2

PAPER

102584 - Garden Green 8-1/2" X 11" Cardstock, 122925 - Calypso Coral 8-1/2" X 11" Cardstock, 144245 - Lemon Lime Twist 8-1/2" X 11" Cardstock, 159276 - Basic White 8-1/2" X 11" Cardstock

INK

102283 - Versamark Pad

TOOLS

104430 - Stampin' Dimensionals, 110755 - Multipurpose Liquid Glue

EMBELLISHMENTS

155554 - Basics Embossing Powders, 162758 - Rainbow Adhesive-Backed Dots

BUNDLES

162858 - Hooray For Surprises Bundle (English)

INSTRUCTIONS



TECHNIQUES:

- Other

PAGE #: 70

CRAFTER LEVEL: Avid

CARD BASE SIZE: Standard A2

PAPER

159276 - Basic White 8-1/2" X 11" Cardstock

INK

147087 - Crushed Curry Classic Stampin' Pad, 147101 - Calypso Coral Classic Stampin' Pad, 147107 - Pool Party Classic Stampin' Pad, 161648 - Pebbled Path Classic Stampin' Pad

TOOLS

104430 - Stampin' Dimensionals, 110755 - Multipurpose Liquid Glue, 153611 - Blending Brushes

EMBELLISHMENTS

162587 - Petal Pink & Pretty Peacock Foiled Gems

BUNDLES

162755 - Hot Air Balloon Bundle (English)

INSTRUCTIONS



TECHNIQUES:

- Blending Brushes

PAGE #: 70

CRAFTER LEVEL: Avid

CARD BASE SIZE: Standard A2

PAPER

122924 - Pool Party 8-1/2" X 11" Cardstock, 159276 - Basic White 8-1/2" X 11" Cardstock, 161644 - Subtles 6" X 6" (15.2 X 15.2 Cm) Designer Series Paper

INK

132708 - Tuxedo Black Memento Ink Pad, 147089 - Garden Green Classic Stampin' Pad, 147094 - Daffodil Delight Classic Stampin' Pad, 147101 - Calypso Coral Classic Stampin' Pad, 147108 - Petal Pink Classic Stampin' Pad, 147114 - Early Espresso Classic Stampin' Pad, 147116 - Crumb Cake Classic Stampin' Pad, 147145 - Lemon Lime Twist Classic Stampin' Pad, 161664 - Bubble Bath Classic Stampin' Pad

TOOLS

104430 - Stampin' Dimensionals, 110755 - Multipurpose Liquid Glue, 151298 - Water Painters

BUNDLES

162839 - Kiddin' Around Bundle (English)

INSTRUCTIONS



TECHNIQUES:

- Other

PAGE #: 70

CRAFTER LEVEL: Avid

CARD BASE SIZE: Standard A2

PAPER

120953 - Crumb Cake 8-1/2" X 11" Cardstock, 144245 - Lemon Lime Twist 8-1/2" X 11" Cardstock, 159276 - Basic White 8-1/2" X 11" Cardstock, 161718 - Bubble Bath 8-1/2" X 11" Cardstock

INK

147089 - Garden Green Classic Stampin' Pad, 147101 - Calypso Coral Classic Stampin' Pad, 147116 - Crumb Cake Classic Stampin' Pad, 161664 - Bubble Bath Classic Stampin' Pad

TOOLS

104430 - Stampin' Dimensionals, 110755 - Multipurpose Liquid Glue, 141825 - Foam Adhesive Strips, 151298 - Water Painters

EMBELLISHMENTS

142314 - Window Sheets, 159195 - 2022–2024 In Color Baker's Twine Pack, 161626 - Loose Silver Sequins

BUNDLES

162771 - Ice Cream Swirl Bundle (English)

INSTRUCTIONS



TECHNIQUES:

- Other

PAGE #: 71

CRAFTER LEVEL: Avid

CARD BASE SIZE: Standard A2

PAPER

101650 - Very Vanilla 8-1/2" X 11" Cardstock, 102584 - Garden Green 8-1/2" X 11" Cardstock, 159276 - Basic White 8-1/2" X 11" Cardstock, 161718 - Bubble Bath 8-1/2" X 11" Cardstock, 161720 - Lemon Lolly 8-1/2" X 11" Cardstock, 162930 - Sweet Thoughts Memories & More Card Pack

INK

132708 - Tuxedo Black Memento Ink Pad, 141979 - Embossing Paste, 147088 - Shaded Spruce Classic Stampin' Pad, 147089 - Garden Green Classic Stampin' Pad, 161664 - Bubble Bath Classic Stampin' Pad, 161665 - Pecan Pie Classic Stampin' Pad, 161666 - Lemon Lolly Classic Stampin' Pad

TOOLS

104430 - Stampin' Dimensionals, 110755 - Multipurpose Liquid Glue, 142808 - Palette Knives, 152813 - Stampin' Seal

EMBELLISHMENTS

155475 - Baker's Twine Essentials Pack, 158130 - Iridescent Rhinestones Basic Jewels

BUNDLES

162584 - Lifetime Of Love Bundle (English)

INSTRUCTIONS

Use leaf die from bundle to make stencil with cardstock.



TECHNIQUES:

- Embossing Paste
- Stampin' Blends Coloring

PAGE #: 71

CRAFTER LEVEL: Avid

CARD BASE SIZE: Standard A2

PAPER

120953 - Crumb Cake 8-1/2" X 11" Cardstock, 144245 - Lemon Lime Twist 8-1/2" X 11" Cardstock, 149612 - Fluid 100 Watercolor Paper, 159276 - Basic White 8-1/2" X 11" Cardstock, 161717 - Pecan Pie 8-1/2" X 11" Cardstock, 161718 - Bubble Bath 8-1/2" X 11" Cardstock, 161722 - Pebbled Path 8-1/2" X 11" Cardstock, 162930 - Sweet Thoughts Memories & More Card Pack

INK

102283 - Versamark Pad, 147089 - Garden Green Classic Stampin' Pad, 147101 - Calypso Coral Classic Stampin' Pad, 147277 - Uninked Stampin' Pad & Whisper White Refill, 161648 - Pebbled Path Classic Stampin' Pad, 161664 - Bubble Bath Classic Stampin' Pad, 161665 - Pecan Pie Classic Stampin' Pad

TOOLS

104430 - Stampin' Dimensionals, 110755 - Multipurpose Liquid Glue, 151298 - Water Painters, 152813 - Stampin' Seal

EMBELLISHMENTS

155555 - Metallics Embossing Powders, 161635 - 3/8" (1 Cm) Sheer Ribbon Combo Pack, 162824 - Champagne Iridescent Dots

BUNDLES

162627 - Lovely & Sweet Bundle (English)

INSTRUCTIONS

Stapler used. Cut ribbon in half. Rip edges of pecan and watercolor papers.



TECHNIQUES:

- Distressing
- Heat Embossing
- Modifying Embellishments
- Other
- Splattering
- Stamping off
- Watercolor • Wash
- Watercolor • Resist

PAGE #: 71

CRAFTER LEVEL: Avid

CARD BASE SIZE: Standard A2

PAPER

102584 - Garden Green 8-1/2" X 11" Cardstock, 122925 - Calypso Coral 8-1/2" X 11" Cardstock, 144245 - Lemon Lime Twist 8-1/2" X 11" Cardstock, 159276 - Basic White 8-1/2" X 11" Cardstock, 161640 - Delightfully Eclectic 12" X 12" (30.5 X 30.5 Cm) Designer Series Paper, 161718 - Bubble Bath 8-1/2" X 11" Cardstock, 161749 - More Dazzle 6" X 6" (15.2 X 15.2 Cm) Specialty Paper

INK

102283 - Versamark Pad, 147089 - Garden Green Classic Stampin' Pad, 147101 - Calypso Coral Classic Stampin' Pad, 154881 - Calypso Coral Stampin' Blends Combo Pack, 154903 - Shaded Spruce Stampin' Blends Combo Pack, 161648 - Pebbled Path Classic Stampin' Pad, 161664 - Bubble Bath Classic Stampin' Pad, 161665 - Pecan Pie Classic Stampin' Pad, 161675 - Bubble Bath Stampin' Blends Combo Pack

TOOLS

104430 - Stampin' Dimensionals, 110755 - Multipurpose Liquid Glue, 152813 - Stampin' Seal, 153611 - Blending Brushes, 161285 - Foursquare Decorative Masks

EMBELLISHMENTS

155555 - Metallics Embossing Powders, 160387 - Pastel Adhesive-Backed Sequins

BUNDLES

162640 - Notes Of Nature Bundle (English)

INSTRUCTIONS

Use blending brush to add pecan to coral panel. Tear perforated 'holes' and bend at score line. Soften stenciling by blending edges of panel.



TECHNIQUES:

- Distressing
- Heat Embossing

PAGE #: 71

CRAFTER LEVEL: Avid

CARD BASE SIZE: Standard A2

STAMPS

162670 - Enduring Beauty Photopolymer Stamp Set (English)

PAPER

101650 - Very Vanilla 8-1/2" X 11" Cardstock, 120953 - Crumb Cake 8-1/2" X 11" Cardstock, 133679 - Lost Lagoon 8-1/2" X 11" Cardstock

INK

101406 - Jet Black Stāzon Pad, 147089 - Garden Green Classic Stampin' Pad, 147101 - Calypso Coral Classic Stampin' Pad, 147277 - Uninked Stampin' Pad & Whisper White Refill, 161664 - Bubble Bath Classic Stampin' Pad, 161666 - Lemon Lolly Classic Stampin' Pad

TOOLS

104430 - Stampin' Dimensionals, 110755 - Multipurpose Liquid Glue, 152813 - Stampin' Seal, 153611 - Blending Brushes

EMBELLISHMENTS

158987 - Iridescent Pearl Basic Jewels

BUNDLES

162597 - Painted Lavender Bundle

INSTRUCTIONS

Ink blend garden onto crumb cardstock.



TECHNIQUES:

- Blending Brushes

PAGE #: 72

CRAFTER LEVEL: Avid

CARD BASE SIZE: Standard A2

PAPER

100702 - Old Olive 8-1/2" X 11" Cardstock, 101650 - Very Vanilla 8-1/2" X 11" Cardstock, 120953 - Crumb Cake 8-1/2" X 11" Cardstock, 146968 - Blueberry Bushel 8-1/2" X 11" Cardstock, 146982 - Balmy Blue 8-1/2" X 11" Cardstock, 159276 - Basic White 8-1/2" X 11" Cardstock, 163170 - Glorious Gingham 6" X 6" (15.2 X 15.2 Cm) Designer Series Paper

INK

147105 - Balmy Blue Classic Stampin' Pad, 147113 - Smoky Slate Classic Stampin' Pad, 147138 - Blueberry Bushel Classic Stampin' Pad

TOOLS

103683 - Mini Glue Dots, 104430 - Stampin' Dimensionals, 154031 - Tear & Tape Adhesive

EMBELLISHMENTS

155570 - Round & Square Brads, 162557 - Adhesive-Backed Hearts & Flowers

BUNDLES

162880 - Sending Love Bundle (English)

INSTRUCTIONS



TECHNIQUES:

- Stamping off

PAGE #: 72

CRAFTER LEVEL: Avid

CARD BASE SIZE: Standard A2

PAPER

120953 - Crumb Cake 8-1/2" X 11" Cardstock, 141416 - Flirty Flamingo 8-1/2" X 11" Cardstock, 159276 - Basic White 8-1/2" X 11" Cardstock

INK

102283 - Versamark Pad, 147052 - Flirty Flamingo Classic Stampin' Pad, 161665 - Pecan Pie Classic Stampin' Pad

TOOLS

103683 - Mini Glue Dots, 104430 - Stampin' Dimensionals, 151298 - Water Painters

EMBELLISHMENTS

155555 - Metallics Embossing Powders

BUNDLES

162706 - Rock Star Bundle (English)

INSTRUCTIONS



TECHNIQUES:

- Heat Embossing
- Watercolor • Wash

PAGE #: 72

CRAFTER LEVEL: Avid

CARD BASE SIZE: Standard A2

PAPER

120953 - Crumb Cake 8-1/2" X 11" Cardstock, 159276 - Basic White 8-1/2" X 11" Cardstock, 162930 - Sweet Thoughts Memories & More Card Pack

INK

147101 - Calypso Coral Classic Stampin' Pad

TOOLS

103683 - Mini Glue Dots, 104430 - Stampin' Dimensionals

BUNDLES

162608 - Perennial Postage Bundle (English)

INSTRUCTIONS



TECHNIQUES:

- Other

PAGE #: 72

CRAFTER LEVEL: Avid

CARD BASE SIZE: Standard A2

PAPER

120953 - Crumb Cake 8-1/2" X 11" Cardstock, 149612 - Fluid 100 Watercolor Paper, 155613 - Fresh Freesia 8-1/2" X 11" Cardstock, 159276 - Basic White 8-1/2" X 11" Cardstock, 162616 - Nature's Sweetness 12" X 12" (30.5 X 30.5 Cm) Specialty Designer Series Paper

INK

132708 - Tuxedo Black Memento Ink Pad, 147090 - Old Olive Classic Stampin' Pad, 147099 - Gorgeous Grape Classic Stampin' Pad, 154892 - Old Olive Stampin' Blends Combo Pack, 155518 - Fresh Freesia Stampin' Blends Combo Pack

TOOLS

103683 - Mini Glue Dots, 104430 - Stampin' Dimensionals, 151298 - Water Painters, 152813 - Stampin' Seal

EMBELLISHMENTS

159555 - Gold & Vanilla 3/8" (1 Cm) Satin Edged Ribbon

BUNDLES

162667 - Stippled Roses Bundle (English)

INSTRUCTIONS



TECHNIQUES:

- Stampin' Blends Coloring
- Watercolor • Wash

PAGE #: 73

CRAFTER LEVEL: Avid

CARD BASE SIZE: Standard A2

PAPER

100702 - Old Olive 8-1/2" X 11" Cardstock, 146968 - Blueberry Bushel 8-1/2" X 11" Cardstock, 149612 - Fluid 100 Watercolor Paper, 159276 - Basic White 8-1/2" X 11" Cardstock

INK

101406 - Jet Black Stāzon Pad, 147090 - Old Olive Classic Stampin' Pad, 147138 - Blueberry Bushel Classic Stampin' Pad, 155611 - Fresh Freesia Classic Stampin' Pad

TOOLS

103683 - Mini Glue Dots, 104430 - Stampin' Dimensionals, 151298 - Water Painters, 152813 - Stampin' Seal

EMBELLISHMENTS

104199 - Linen Thread

BUNDLES

162655 - Wild Ferns Bundle (English)

INSTRUCTIONS

Watercolor wash the background, let it dry completely before stamping on top.



TECHNIQUES:

- Watercolor • Detailed
- Watercolor • Wash

PAGE #: 73

CRAFTER LEVEL: Avid

CARD BASE SIZE: Standard A2

PAPER

120953 - Crumb Cake 8-1/2" X 11" Cardstock, 146982 - Balmy Blue 8-1/2" X 11" Cardstock, 159276 - Basic White 8-1/2" X 11" Cardstock

INK

132708 - Tuxedo Black Memento Ink Pad, 147087 - Crushed Curry Classic Stampin' Pad, 147090 - Old Olive Classic Stampin' Pad, 147101 - Calypso Coral Classic Stampin' Pad, 147105 - Balmy Blue Classic Stampin' Pad, 147116 - Crumb Cake Classic Stampin' Pad, 147277 - Uninked Stampin' Pad & Whisper White Refill, 155611 - Fresh Freesia Classic Stampin' Pad

TOOLS

104430 - Stampin' Dimensionals, 152813 - Stampin' Seal

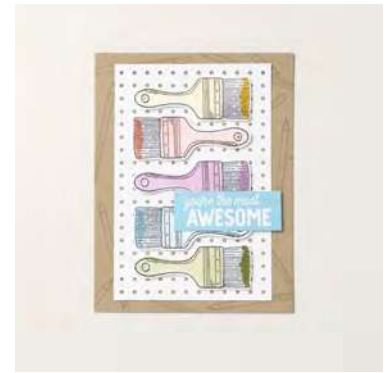
EMBELLISHMENTS

155554 - Basics Embossing Powders

BUNDLES

162723 - Trusty Tools Bundle (English)

INSTRUCTIONS



TECHNIQUES:

- Heat Embossing
- Stamping off

PAGE #: 73

CRAFTER LEVEL: Avid

CARD BASE SIZE: Standard A2

PAPER

100702 - Old Olive 8-1/2" X 11" Cardstock, 131199 - Crushed Curry 8-1/2" X 11" Cardstock, 149612 - Fluid 100 Watercolor Paper, 159276 - Basic White 8-1/2" X 11" Cardstock, 162828 - Just Kiddin' 12" X 12" (30.5 X 30.5 Cm) Designer Series Paper

INK

102283 - Versamark Pad, 147087 - Crushed Curry Classic Stampin' Pad, 147090 - Old Olive Classic Stampin' Pad, 147101 - Calypso Coral Classic Stampin' Pad, 155611 - Fresh Freesia Classic Stampin' Pad

TOOLS

103683 - Mini Glue Dots, 104430 - Stampin' Dimensionals, 151298 - Water Painters, 152813 - Stampin' Seal

EMBELLISHMENTS

155554 - Basics Embossing Powders

BUNDLES

162822 - Thoughtful Expressions Bundle (English)

INSTRUCTIONS



TECHNIQUES:

- Heat Embossing
- Watercolor • Detailed

PAGE #: 73

CRAFTER LEVEL: Avid

CARD BASE SIZE: Standard A2

PAPER

101856 - Vellum 8-1/2" X 11" Cardstock, 155613 - Fresh Freesia 8-1/2" X 11" Cardstock, 159276 - Basic White 8-1/2" X 11" Cardstock

INK

147052 - Flirty Flamingo Classic Stampin' Pad, 147090 - Old Olive Classic Stampin' Pad, 147138 - Blueberry Bushel Classic Stampin' Pad, 147277 - Uninked Stampin' Pad & Whisper White Refill, 155611 - Fresh Freesia Classic Stampin' Pad

TOOLS

103683 - Mini Glue Dots, 104430 - Stampin' Dimensionals, 133773 - Sponge Daubers

EMBELLISHMENTS

155554 - Basics Embossing Powders, 158130 - Iridescent Rhinestones Basic Jewels

BUNDLES

162774 - Submarine Life Bundle (English)

INSTRUCTIONS

Ink the submarine in freesia first then sponge on some blueberry before stamping.



TECHNIQUES:

- Heat Embossing
- Sponging

PAGE #: 79

CRAFTER LEVEL: Avid

CARD BASE SIZE: Standard A2

STAMPS

162764 - Ice Cream Swirl Photopolymer Stamp Set (English), 162937 - Carnival Treats Host Cling Stamp Set (English)

PAPER

146982 - Balmy Blue 8-1/2" X 11" Cardstock, 159276 - Basic White 8-1/2" X 11" Cardstock, 161720 - Lemon Lolly 8-1/2" X 11" Cardstock, 162747 - Lighter Than Air 6" X 6" (15.2 X 15.2 Cm) Designer Series Paper

INK

147052 - Flirty Flamingo Classic Stampin' Pad, 147105 - Balmy Blue Classic Stampin' Pad, 155611 - Fresh Freesia Classic Stampin' Pad, 161665 - Pecan Pie Classic Stampin' Pad

TOOLS

104430 - Stampin' Dimensionals, 152813 - Stampin' Seal, 160693 - Happy Labels Pick A Punch

EMBELLISHMENTS

158146 - Classic Matte Dots

INSTRUCTIONS



TECHNIQUES:

- Fussy cutting

PAGE #: 79

CRAFTER LEVEL: Avid

CARD BASE SIZE: Standard A2

STAMPS

162764 - Ice Cream Swirl Photopolymer Stamp Set (English), 162937 - Carnival Treats Host Cling Stamp Set (English)

PAPER

155613 - Fresh Freesia 8-1/2" X 11" Cardstock, 159276 - Basic White 8-1/2" X 11" Cardstock, 162747 - Lighter Than Air 6" X 6" (15.2 X 15.2 Cm) Designer Series Paper

INK

147052 - Flirty Flamingo Classic Stampin' Pad, 155611 - Fresh Freesia Classic Stampin' Pad, 161698 - Subtles Stampin' Write Markers

TOOLS

104430 - Stampin' Dimensionals, 133773 - Sponge Daubers, 152813 - Stampin' Seal, 162821 - Thoughtful Expressions Dies

EMBELLISHMENTS

155475 - Baker's Twine Essentials Pack, 160387 - Pastel Adhesive-Backed Sequins

INSTRUCTIONS

Stampin' write used: Balmy



TECHNIQUES:

- Markering Stamps

PAGE #: 84

CRAFTER LEVEL: Avid

CARD BASE SIZE: Standard A2

STAMPS

162899 - Let'S Chat Photopolymer Stamp Set (English)

PAPER

122924 - Pool Party 8-1/2" X 11" Cardstock, 141416 - Flirty Flamingo 8-1/2" X 11" Cardstock, 159276 - Basic White 8-1/2" X 11" Cardstock

INK

102283 - Versamark Pad, 147087 - Crushed Curry Classic Stampin' Pad, 147107 - Pool Party Classic Stampin' Pad

TOOLS

104430 - Stampin' Dimensionals, 152813 - Stampin' Seal, 162553 - Bee Builder Punch, 162607 - Perennial Postage Dies

EMBELLISHMENTS

155554 - Basics Embossing Powders, 162557 - Adhesive-Backed Hearts & Flowers

INSTRUCTIONS



TECHNIQUES:

- Other